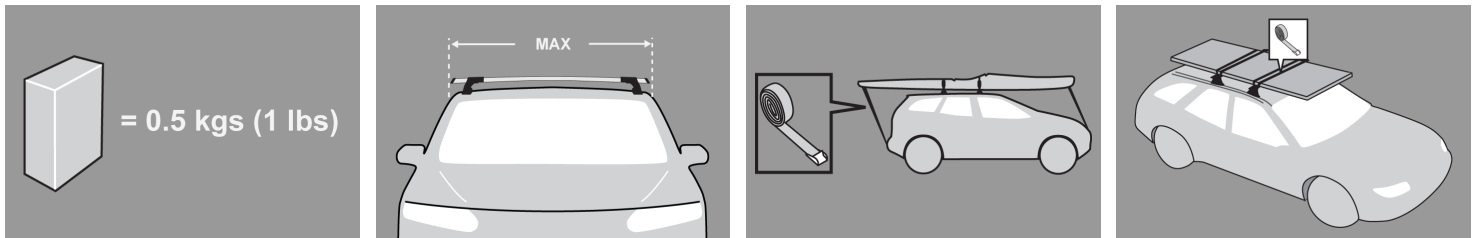


GB Fitting Instructions for Basic Carrier



x 4



x 4



x 4

 +  + 

MAX
= kgs (lbs)



MAX kgs (lbs)



W/P

WHD

Holden

Colorado Double Cab, 4dr Ute	08-Jun 12	AU	75 kgs (165 lbs)	75 kgs (165 lbs)
Colorado Double Cab, 4dr Ute	Jul 08- 12	NZ	75 kgs (165 lbs)	75 kgs (165 lbs)
Rodeo RA Double , 4dr Ute	Feb 03- 08	NZ	75 kgs (165 lbs)	75 kgs (165 lbs)
Rodeo RA Double , 4dr Ute	Feb 03- 08	AU	75 kgs (165 lbs)	75 kgs (165 lbs)

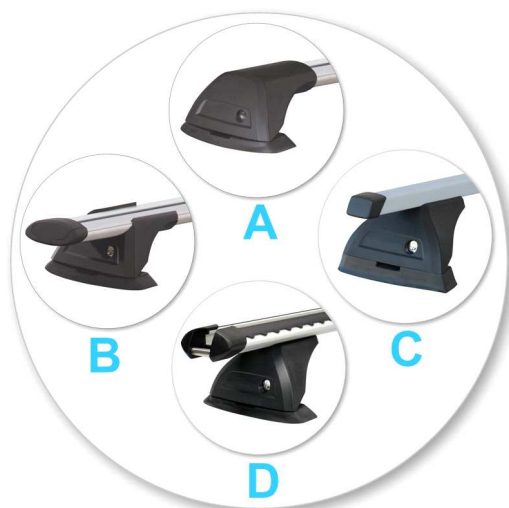
Isuzu

D Max Double Cab, 4dr Ute	07- 12	EU	60 kgs (132 lbs)	60 kgs (132 lbs)
D Max Double Cab, 4dr Ute	09- 12	NZ	60 kgs (132 lbs)	60 kgs (132 lbs)
D Max Double Cab, 4dr Ute	Jul 08-Jun 12	AU	60 kgs (132 lbs)	60 kgs (132 lbs)
Double Cab , 4dr Ute	04- 08	ZA	75 kgs (165 lbs)	75 kgs (165 lbs)
Rodeo Double Cab, 4dr Ute	07- 12	EU	75 kgs (165 lbs)	75 kgs (165 lbs)

First Time Installation



- Remove parts from inside the package and check. Contact your dealer if any parts are missing or damaged.



- This kit fits type A, B, C and D.
- These instructions show type A crossbar fitted. They also apply to type B, C and D.

NOTE: Clamp images in these instructions may not be representative of the clamps in this kit



- Use keys to remove covers.



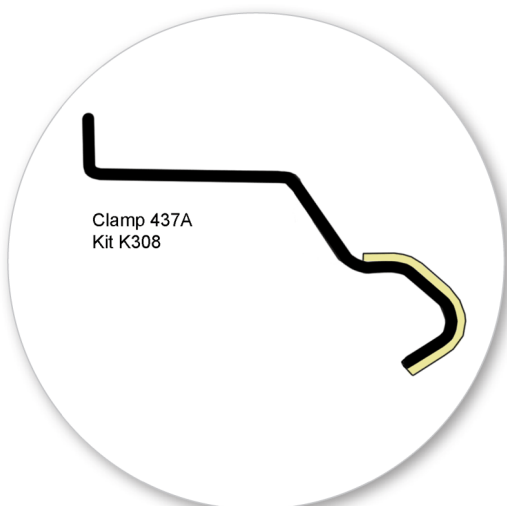
- Use hex screwdriver to reverse adjusting screw 10 turns.



- Press adjusting screw and pull crossbar legs out. Refer to the crossbar instructions for crossbar adjustment.
- Ensure each end of the crossbar is adjusted equally.



- Remove locking screw.



- Apply protective strip as shown.
Trim if required.



- Attach clamp to each leg. NOTE; clamps may have labels showing their positions on the vehicle (For example; "Front Right").



- Refit locking screw so that it goes through the hole in the clamp. Do not begin to tighten the locking screw.

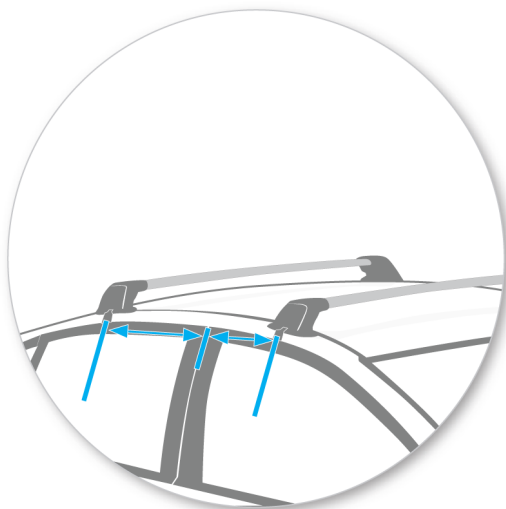


- Fit rubber pad (supplied with crossbar) to foot.

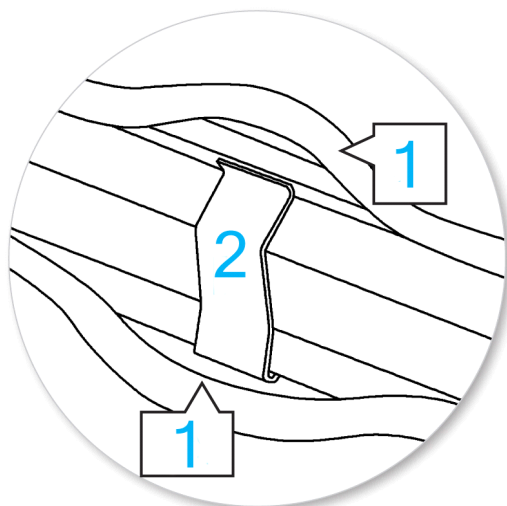


- Make sure the pad fits into the holes underneath the foot.

Fitment



- Place crossbar on vehicle. Minimum recommended spacing between the bars is 700mm (27 1/2") (unless otherwise stated).
- Clamps over rubber door frame mouldings and body clips supplied with kit
- Please check the rear of this manual for information relating specifically to your vehicle.



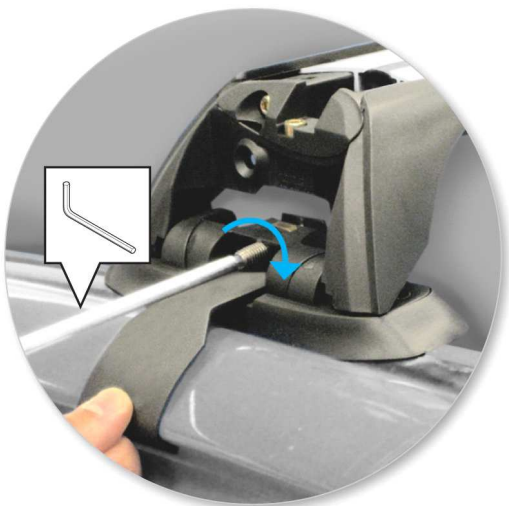
- Fit Body Clip by pulling back both rubber mouldings (1) and positioning Clip (2) as shown.
- Refit rubber seal.



- Adjust the legs on the crossbar to that they are positioned equally from the ends of the crossbar, and the clamps engage firmly on the body clip installed on the vehicle.



- Tighten adjusting screw to 5 Nm (3.7 ft lb).



- Tighten locking screw on both legs evenly.



- Check crossbar is securely attached to the vehicle.



- Use keys to fit and lock covers

CAUTION:

Recheck all fasteners immediately after a load is applied to the crossbars.
Regularly check screws are tight.

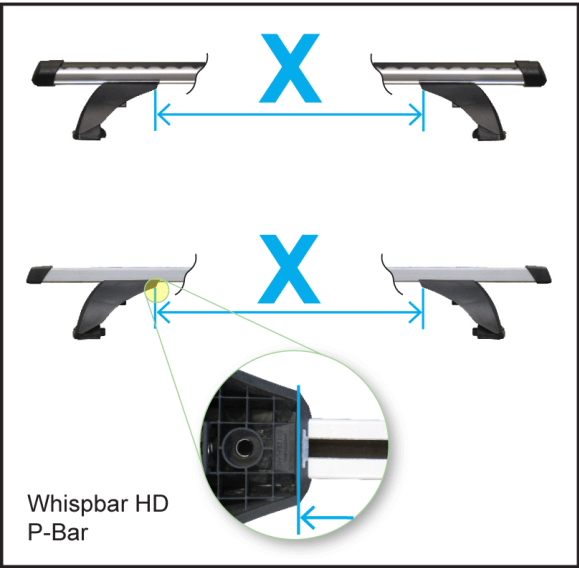
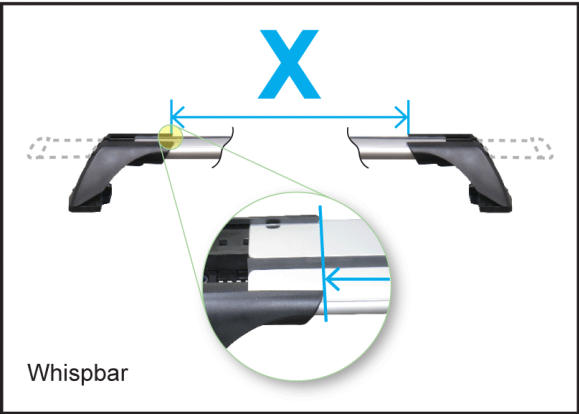
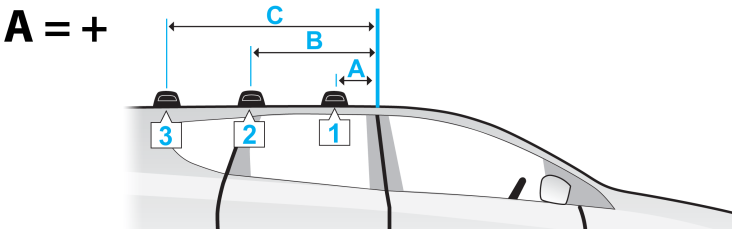
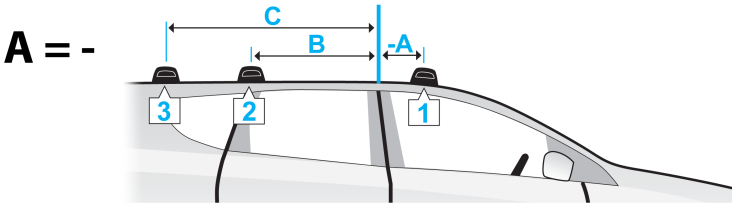
Maintenance

- Clean the car roof and surfaces of the product that will be in contact with the car roof.
- Follow the fitting instructions for fitting the product to your vehicle. Make sure all steps are carried out in order.
- Set crossbars a minimum distance of 700mm (27 1/2") apart where no other distance is specified in the fitting instructions. This is especially important when carrying long loads.
- Check unit is securely attached whenever you refit it to the vehicle. If the unit feels loose, refer to the fitting instructions and readjust.
- Some glass/panoramic roofs and radio antennae may not be able to be used when the product is fitted.
- Do not modify this product.
- Refer to the maximum permitted load capacity specified in the fitting instructions. Do not exceed the vehicle manufacturers roof load rating if it is lower than the maximum load capacity specified in the fitting instructions.
- Loads should not overhang the sides of the product and be evenly distributed with the lowest possible centre of gravity.
- Long loads should be secured with non-elastic straps to the front and rear of the vehicle.
- Objects with pointed ends (e.g. ski poles) should be carried with the pointed ends to the rear of the vehicle.
- Remove all loose or removable objects from the load prior to loading.
- Make sure all loads are securely fastened with non-elastic straps. Check regularly during longer journeys.

- A loaded roof rack system can alter the performance of your vehicle. Be especially aware of the effects of side winds, changing of direction, and braking performance. Avoid rapid acceleration and deceleration. Drive carefully.
- Note that the total height of the vehicle increases when upright loads are carried.
- Products should be locked during transport if they have locks fitted.
- Check and replace worn out or defective parts.
- Keep the product clean and maintained.
- Never drive into a car wash with the roof rack system fitted.
- Lubricate locks and adjusting screws at regular intervals.
- Remove the products from the vehicle when not in use. Make sure all loose parts are stored safely.

-
- Yakima Australia Pty Ltd
17 Hinkler Court
Brendale QLD 4500
AUSTRALIA

www.whispbar.com
www.whispbar.com.au
www.whispbar.co.nz
www.whispbar.co.uk
www.whispbar.co.za
www.whispbar.eu
www.whispbar.ca



Holden Colorado Double Cab, 4dr Ute 08-Jun 12 (AU)
Holden Colorado Double Cab, 4dr Ute Jul 08- 12 (NZ)
Holden Rodeo RA Double , 4dr Ute Feb 03- 08 (AU)
Holden Rodeo RA Double , 4dr Ute Feb 03- 08 (NZ)
Isuzu D Max Double Cab, 4dr Ute 07- 12 (EU)
Isuzu D Max Double Cab, 4dr Ute 09- 12 (NZ)
Isuzu D Max Double Cab, 4dr Ute Jul 08-Jun 12 (AU)
Isuzu Double Cab , 4dr Ute 04- 08 (ZA)
Isuzu Rodeo Double Cab, 4dr Ute 07- 12 (EU)

X					
A	B	C	1	2	3
-340mm	380mm	-	885mm	870mm	-
-13 3/8"	14 15/16ths"	-	34 13/16ths"	34 1/4"	-
-340mm	380mm	-	885mm	870mm	-
-13 3/8"	14 15/16ths"	-	34 13/16ths"	34 1/4"	-
-340mm	380mm	-	877mm	865mm	-
-13 3/8"	14 15/16ths"	-	34 1/2"	34 1/16ths"	-
-340mm	380mm	-	877mm	865mm	-
-13 3/8"	14 15/16ths"	-	34 1/2"	34 1/16ths"	-
-340mm	380mm	-	885mm	870mm	-
-13 3/8"	14 15/16ths"	-	34 13/16ths"	34 1/4"	-
-340mm	380mm	-	885mm	870mm	-
-13 3/8"	14 15/16ths"	-	34 13/16ths"	34 1/4"	-
-340mm	380mm	-	877mm	865mm	-
-13 3/8"	14 15/16ths"	-	34 1/2"	34 1/16ths"	-
-340mm	380mm	-	885mm	870mm	-
-13 3/8"	14 15/16ths"	-	34 13/16ths"	34 1/4"	-