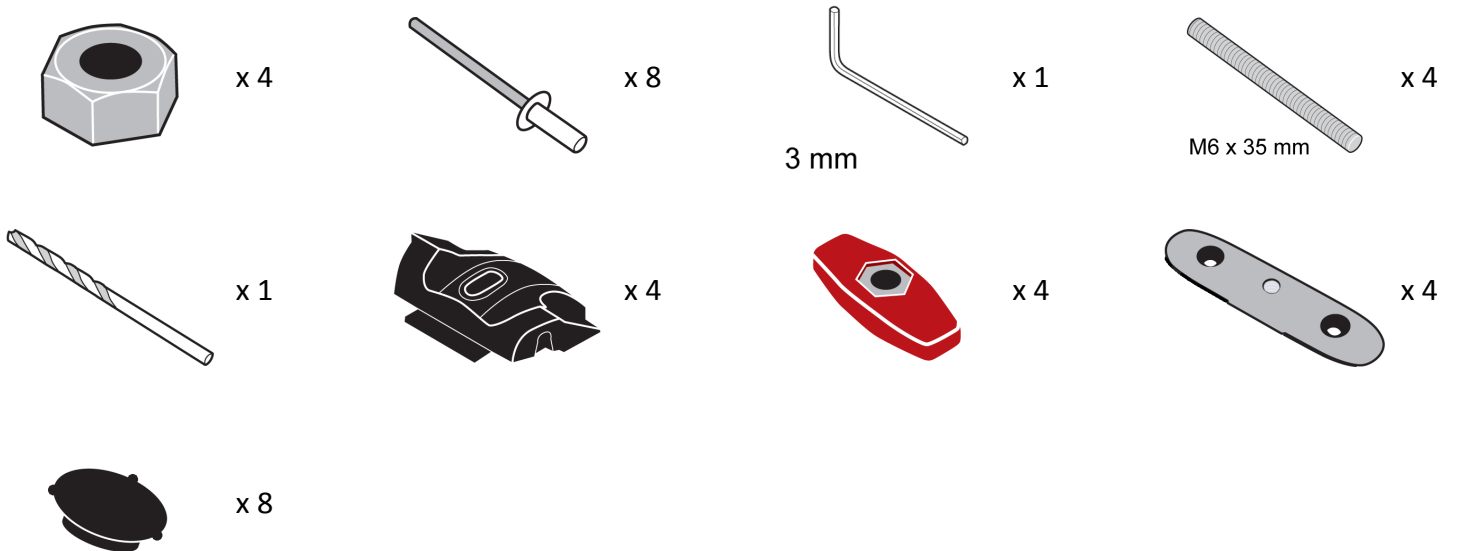
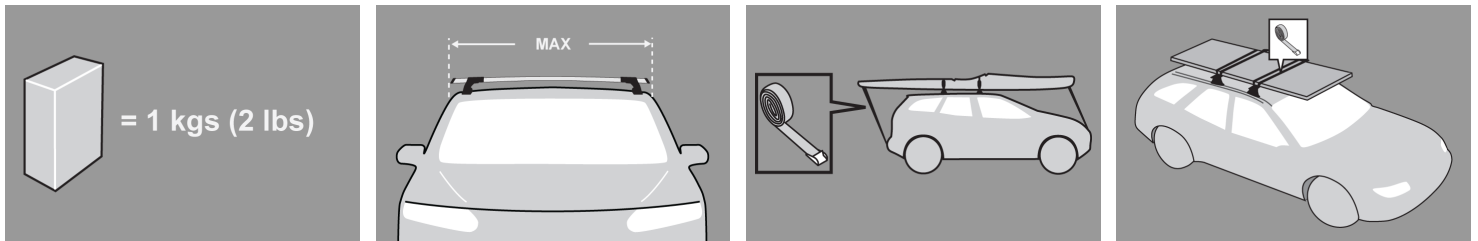


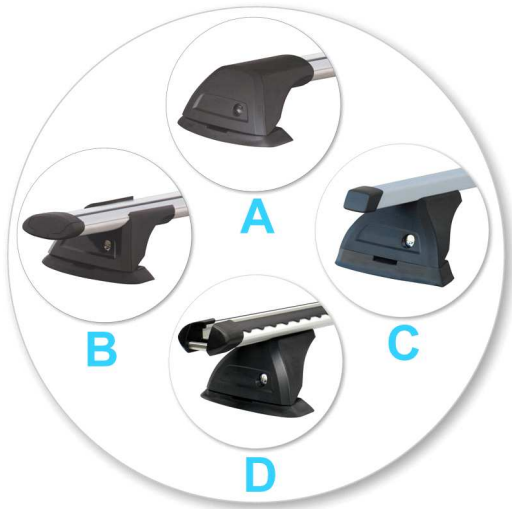
GB Fitting Instructions for Basic Carrier



First Time Installation



- Remove parts from inside the package and check. Contact your dealer if any parts are missing or damaged.



- This kit fits type A, B, C and D.
- These instructions show type A crossbar fitted. They also apply to type B, C and D.



- Use keys to remove covers.



- Use hex screwdriver to reverse adjusting screw 10 turns.



- Remove plastic clamp block by gripping bar leg with fingers and push firmly with thumbs until clamp block drops out behind leg.



- Fit rubber pad (supplied with crossbar) to foot.
- Make sure the pad fits into the holes underneath the foot.



- Carefully select desired position for crossbars on vehicle roof.
- Adjust crossbar in or out to suit vehicle. Refer to the crossbar instructions for crossbar adjustment.
- Apply masking tape to vehicle roof in all four positions.
- Make sure there is no interference between what you intend to carry with aerials, sunroof or tailgate.



- Place crossbar on vehicle. Minimum recommended spacing between the bars is 700mm (27 1/2") (unless otherwise stated).
- Trace around rubber pad using a pencil or pen.
- Repeat for all four positions.



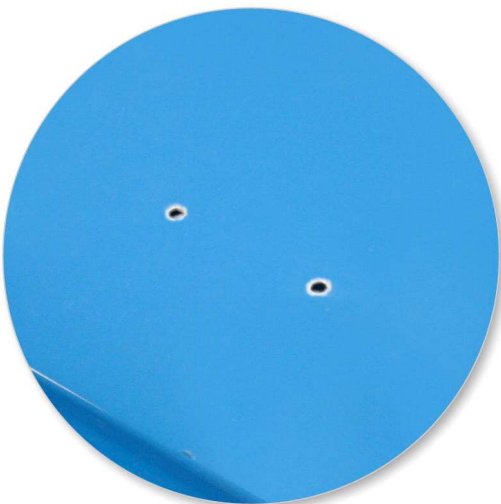
- Remove both pins from each leg. Use tapered end of spanner located inside left hand cover to assist.
- Repeat for all legs.



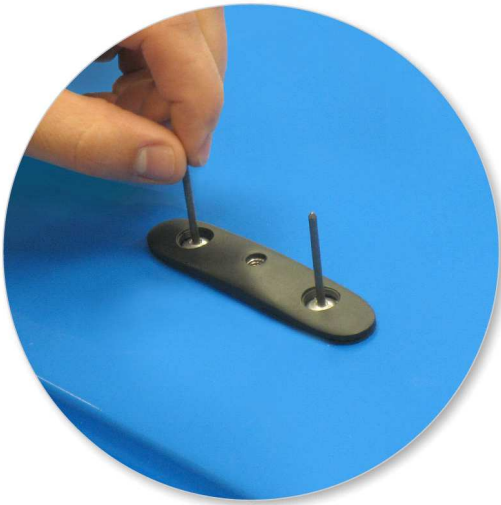
- While holding foot, detach crossbar from foot.



- Drill through the two holes in the foot while holding foot tight on roof in marked position.



- Remove masking tape and place silicon sealant around drilled holes on roof for all four positions.



- Install rivets through permanent mount blocks.



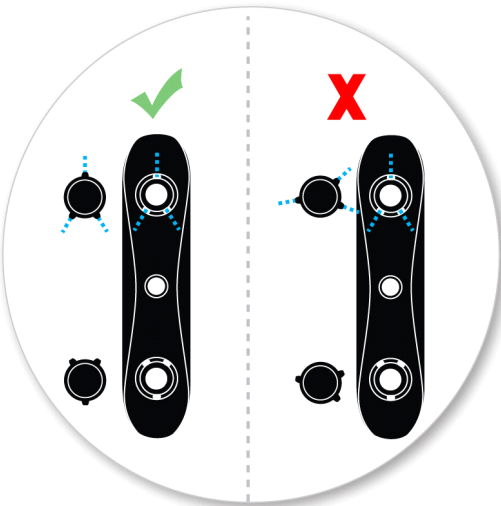
- While holding the permanent mount block firmly on roof, rivet the blocks to the roof.



- Repeat for all four positions.

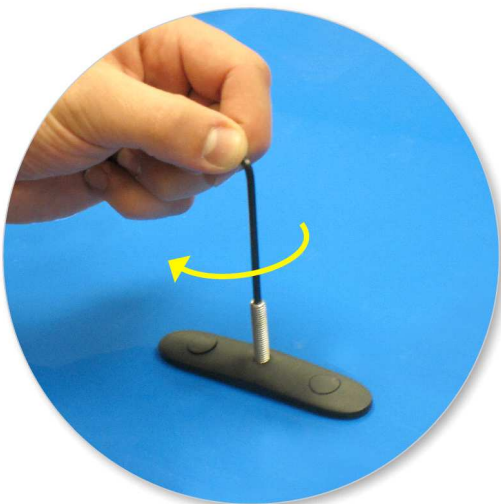


- Fit plastic plugs to permanent mount blocks over rivet heads.

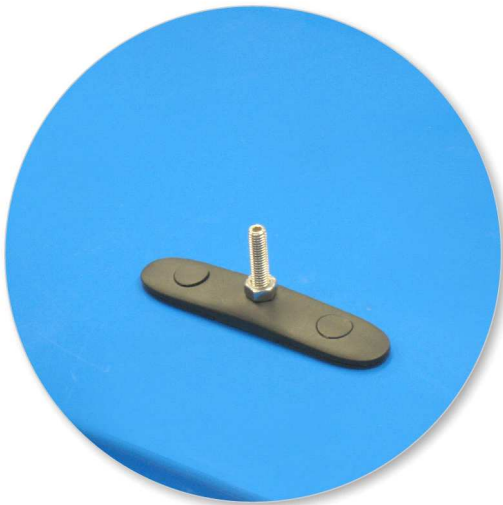


- Assemble as shown.

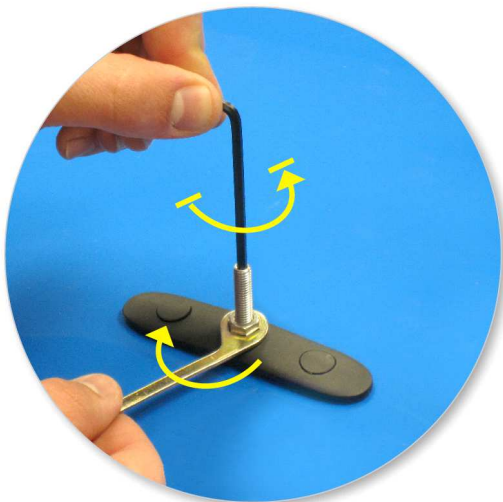
Fitment



- Select grub screws and screw into the vehicle's fixed points.
- Do not over tighten.
- Repeat for all four positions.



- Fit nut to grub screw.



- Using spanner supplied with crossbar and 3mm (1/8") Hex Key, back grub screw off half a turn and lock nut down.



- Assemble foot and pad to crossbar legs by re-inserting pins.



- Select plastic internal block (from fitting kit) and insert into foot.
- Repeat for all legs.



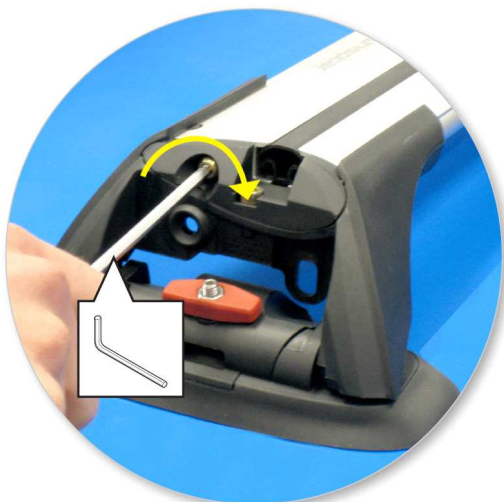
- Place crossbar foot over grubscrews.



- Tighten the red plastic knob.



- Ensure the red plastic knob is in the position shown when fully tightened.



- Tighten adjusting screw to 5 Nm (3.7 ft lb).



- Check crossbar is securely attached to the vehicle.
- Use keys to fit and lock covers

CAUTION:

Recheck all fasteners immediately after a load is applied to the crossbars.

Regularly check screws are tight.

Maintenance

- Clean the car roof and surfaces of the product that will be in contact with the car roof.
- Follow the fitting instructions for fitting the product to your vehicle. Make sure all steps are carried out in order.
- Set crossbars a minimum distance of 700mm (27 1/2") apart where no other distance is specified in the fitting instructions. This is especially important when carrying long loads.
- Check unit is securely attached whenever you refit it to the vehicle. If the unit feels loose, refer to the fitting instructions and readjust.
- Some glass/panoramic roofs and radio antennae may not be able to be used when the product is fitted.
- Do not modify this product.
- Refer to the maximum permitted load capacity specified in the fitting instructions. Do not exceed the vehicle manufacturers roof load rating if it is lower than the maximum load capacity specified in the fitting instructions.
- Loads should not overhang the sides of the product and be evenly distributed with the lowest possible centre of gravity.
- Long loads should be secured with non-elastic straps to the front and rear of the vehicle.
- Objects with pointed ends (e.g. ski poles) should be carried with the pointed ends to the rear of the vehicle.
- Remove all loose or removable objects from the load prior to loading.
- Make sure all loads are securely fastened with non-elastic straps. Check regularly during longer journeys.

- A loaded roof rack system can alter the performance of your vehicle. Be especially aware of the effects of side winds, changing of direction, and braking performance. Avoid rapid acceleration and deceleration. Drive carefully.
- Note that the total height of the vehicle increases when upright loads are carried.
- Products should be locked during transport if they have locks fitted.
- Check and replace worn out or defective parts.
- Keep the product clean and maintained.
- Never drive into a car wash with the roof rack system fitted.
- Lubricate locks and adjusting screws at regular intervals.
- Remove the products from the vehicle when not in use. Make sure all loose parts are stored safely.

-
- Yakima Australia Pty Ltd
17 Hinkler Court
Brendale QLD 4500
AUSTRALIA

www.whispbar.com
www.whispbar.com.au
www.whispbar.co.nz
www.whispbar.co.uk
www.whispbar.co.za
www.whispbar.eu
www.whispbar.ca
