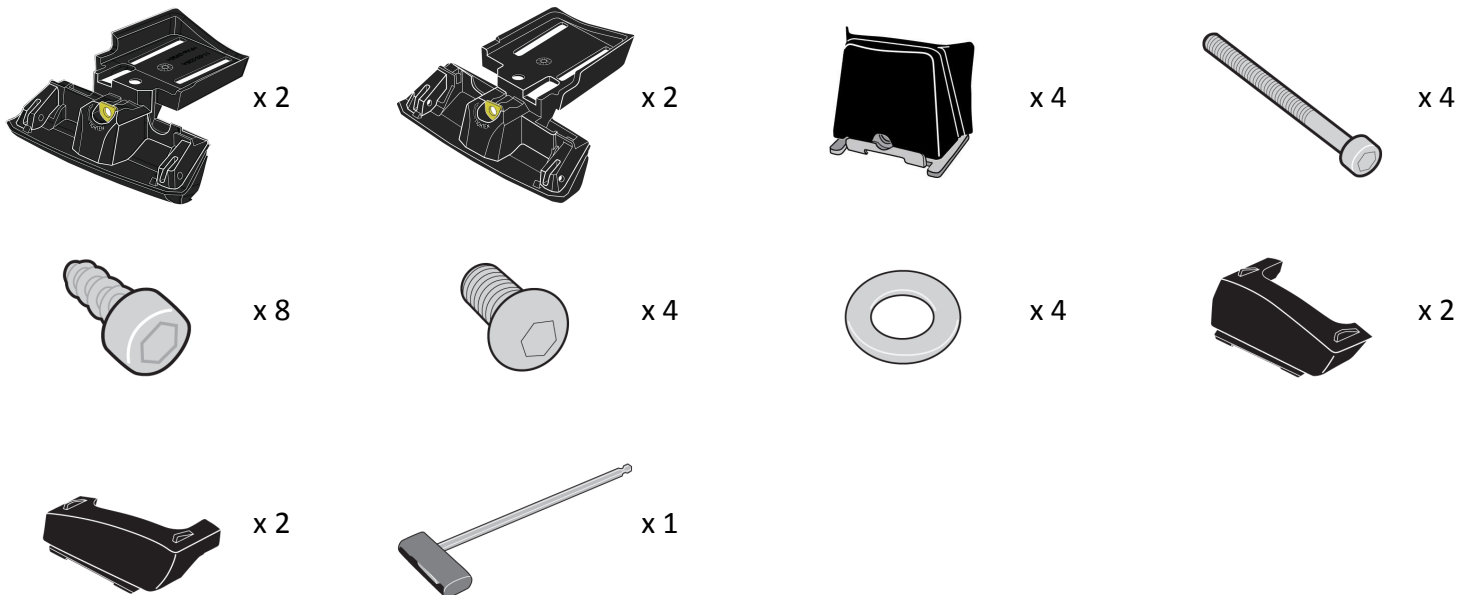
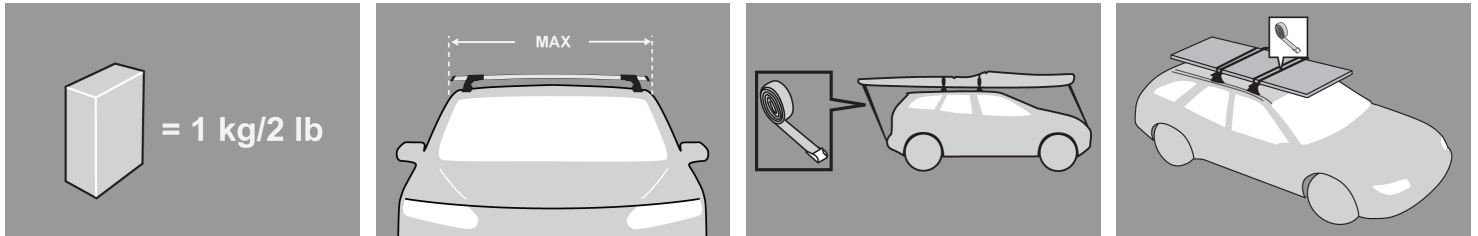


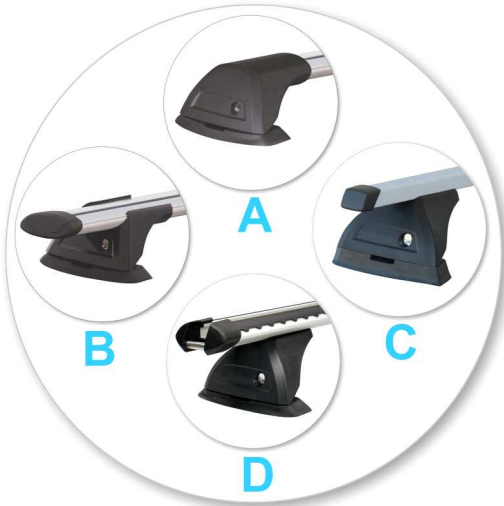
## GB Fitting Instructions for Basic Carrier



## First Time Installation



- Remove parts from inside the package and check. Contact your dealer if any parts are missing or damaged.



- This kit fits type A, B, C and D.
- These instructions show type A crossbar fitted. They also apply to type B, C and D.



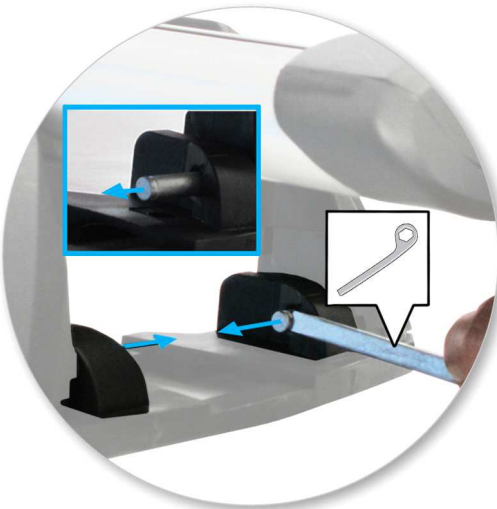
- Use keys to remove covers.



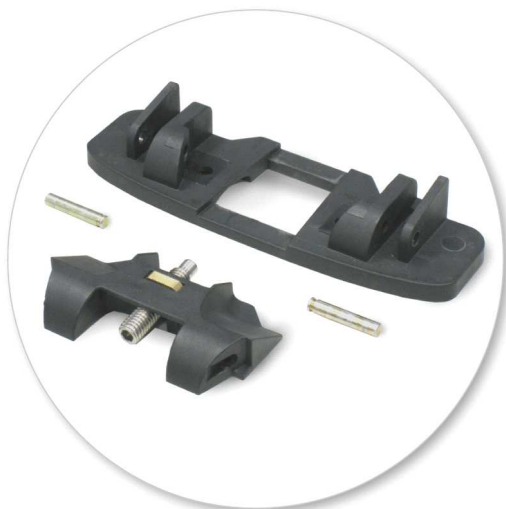
- Use hex screwdriver to reverse adjusting screw 10 turns.



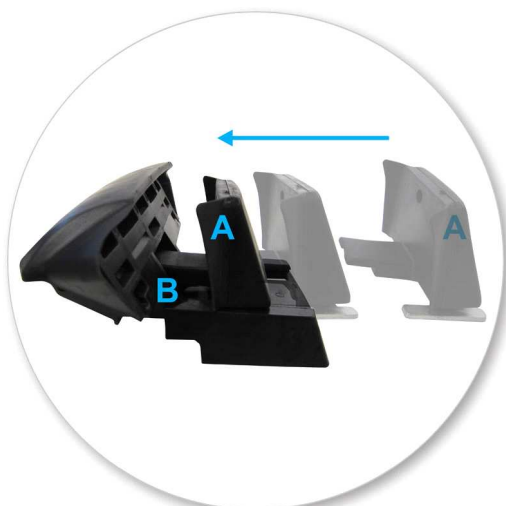
- Remove plastic clamp block by gripping bar leg with fingers and push firmly with thumbs until clamp block drops out behind leg.



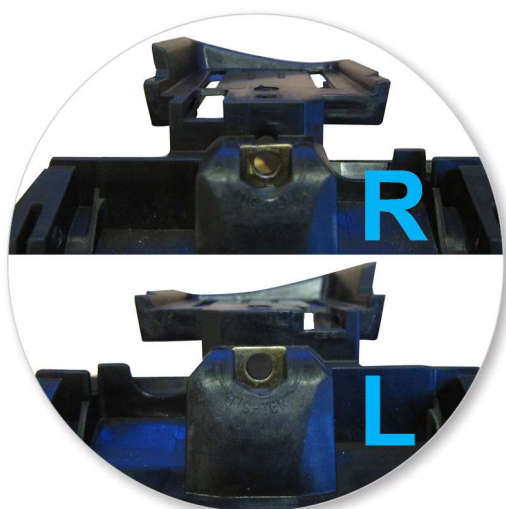
- Remove both pins from each leg. Use tapered end of spanner located inside left hand cover to assist.



- Detach foot from leg. Store loose parts in a safe place.



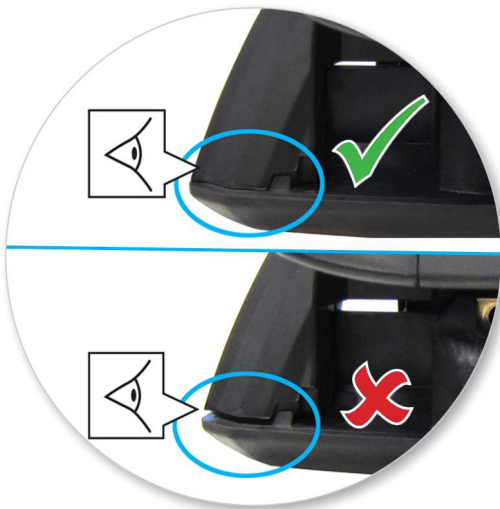
- Ensure that part A is inserted into part B as shown.



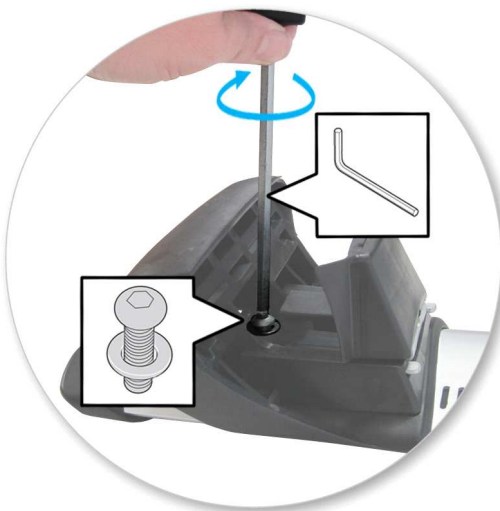
- Note: There is a left hand and right hand side.



- Select rail mount assemblies and match left and right assemblies to the left and right crossbar legs.
- Assemble foot from kit into leg by pressing it down.



- Ensure foot interlocks with leg.



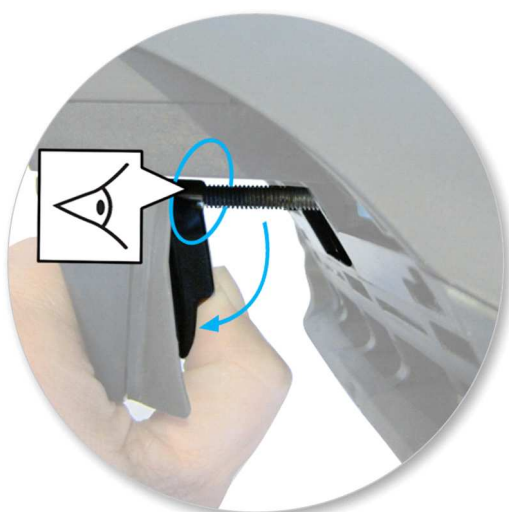
- Using short capscrew and washer, secure assembly onto leg (use Hex Screwdriver supplied with crossbar to assist)



- Use two M5 x 12 mm self tapping screws to secure the assembly onto the leg.
- Do not over tighten.
- Repeat for all legs.



- Slide clamp back towards centre of crossbar.
- Insert M6 x 70 mm capscrew through square brass washer and rail mount assembly.



- The M6 x 70mm capscrew inserts into brass threaded tube in rear clamp.  
NOTE: Lift rubber protector tab to ensure that capscrew aligns directly into brass tube before starting to tighten.
- Take care not to cross-thread the capscrew.



- Bolt should sit in groove as shown.



- Use 5mm Hex Key to start thread.
- Repeat for all legs.

## For type C and D crossbars only.



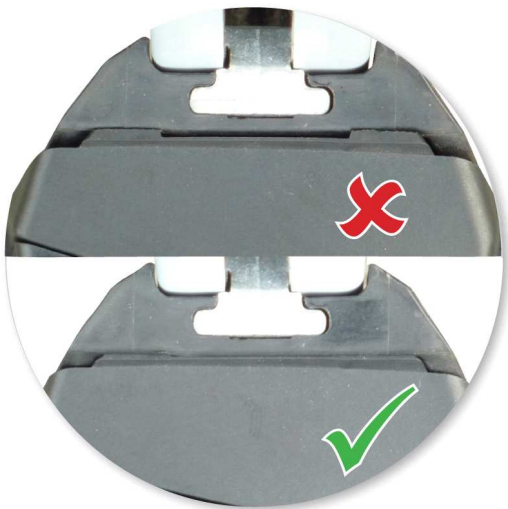
- When attaching this fitting kit to type C and D crossbars, a gap will exist.





- Attach the fairings (supplied with this kit) to the back of the leg.

Note: There is a left hand and right hand side.



- Ensure the fairings 'click' into place and sit flush.

## Fitment



- Adjust crossbar in or out to suit vehicle. Refer to the crossbar instructions for crossbar adjustment.
- Ensure that the crossbar is adjusted evenly at both ends.
- Crossbar can be positioned anywhere along the roof rail.





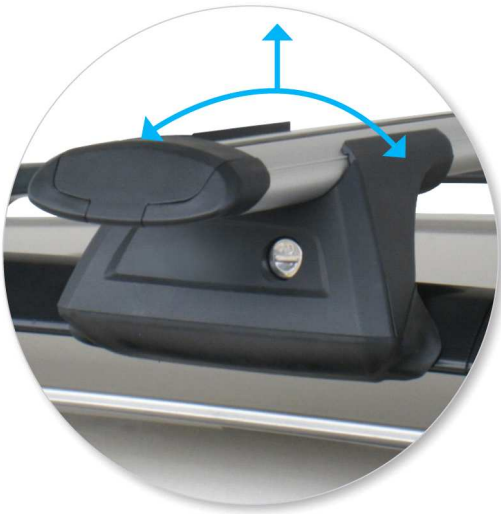
- Tighten adjusting screw to 5 Nm (3.7 ft lb).



- Use 5mm Hex Key to tighten clamp and secure crossbar to rail.



- Correctly installed crossbars. Side rails may vary to those pictured.
- Ensure that all legs clamp securely to the roof rails.



- Check crossbar is securely attached to the vehicle.
- Use keys to fit and lock covers

## CAUTION:

Recheck all fasteners immediately after a load is applied to the crossbars.

Regularly check screws are tight.

## Maintenance

- Clean the car roof and surfaces of the product that will be in contact with the car roof.
- Follow the fitting instructions for fitting the product to your vehicle. Make sure all steps are carried out in order.
- Set crossbars a minimum distance of 700mm (27 1/2") apart where no other distance is specified in the fitting instructions. This is especially important when carrying long loads.
- Check unit is securely attached whenever you refit it to the vehicle. If the unit feels loose, refer to the fitting instructions and readjust.
- Some glass/panoramic roofs and radio antennae may not be able to be used when the product is fitted.
- Do not modify this product.
- Refer to the maximum permitted load capacity specified in the fitting instructions. Do not exceed the vehicle manufacturers roof load rating if it is lower than the maximum load capacity specified in the fitting instructions.
- Loads should not overhang the sides of the product and be evenly distributed with the lowest possible centre of gravity.
- Long loads should be secured with non-elastic straps to the front and rear of the vehicle.
- Objects with pointed ends (e.g. ski poles) should be carried with the pointed ends to the rear of the vehicle.
- Remove all loose or removable objects from the load prior to loading.
- Make sure all loads are securely fastened with non-elastic straps. Check regularly during longer journeys.

- A loaded roof rack system can alter the performance of your vehicle. Be especially aware of the effects of side winds, changing of direction, and braking performance. Avoid rapid acceleration and deceleration. Drive carefully.
- Note that the total height of the vehicle increases when upright loads are carried.
- Products should be locked during transport if they have locks fitted.
- Check and replace worn out or defective parts.
- Keep the product clean and maintained.
- Never drive into a car wash with the roof rack system fitted.
- Lubricate locks and adjusting screws at regular intervals.
- Remove the products from the vehicle when not in use. Make sure all loose parts are stored safely.

- Yakima Australia Pty Ltd  
17 Hinkler Court  
Brendale QLD 4500  
AUSTRALIA

[www.whispbar.com](http://www.whispbar.com)  
[www.whispbar.com.au](http://www.whispbar.com.au)  
[www.whispbar.co.nz](http://www.whispbar.co.nz)  
[www.whispbar.co.uk](http://www.whispbar.co.uk)  
[www.whispbar.co.za](http://www.whispbar.co.za)  
[www.whispbar.eu](http://www.whispbar.eu)  
[www.whispbar.ca](http://www.whispbar.ca)

