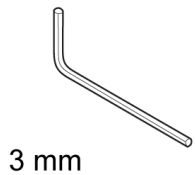
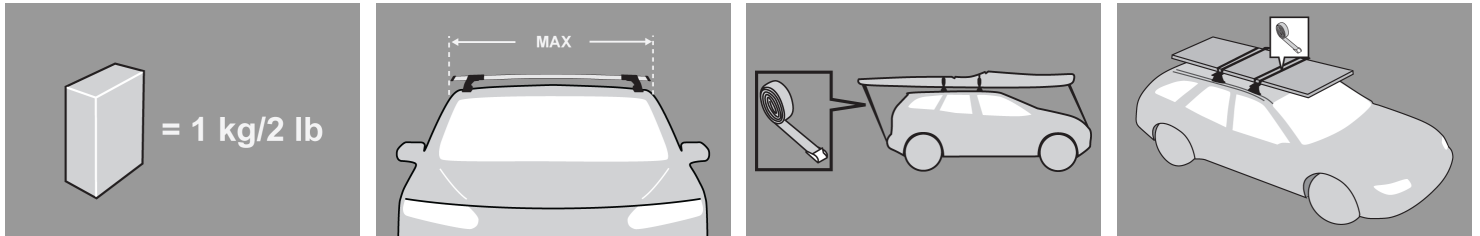


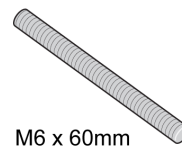
GB Fitting Instructions for Basic Carrier



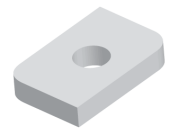
x 1



x 4



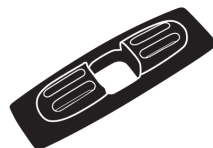
x 4



x 4



x 4



x 4



x 4

 **xx kg/lb** +  + 

= **MAX**
kg/lb



MAX kgs

	W/P	WHD
--	-----	-----

MAX kgs

	W/P	WHD
--	-----	-----

Toyota
4 Runner , 5dr SUV 96- 02
Hilux Surf, 5dr SUV 96- 03

EU	75	75
ZA	75	75

Hilux Surf, 5dr SUV 96- 02
Hilux Surf, 5dr SUV Aug 95-Aug 02

EU	75	75
NZ	75	75

First Time Installation



- Remove parts from inside the package and check. Contact your dealer if any parts are missing or damaged.



- This kit fits type A, B, C and D.
- These instructions show type A crossbar fitted. They also apply to type B, C and D.



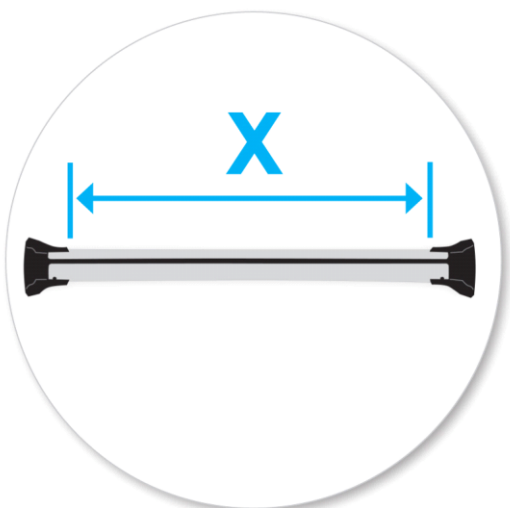
- Use keys to remove covers.



- Use hex screwdriver to reverse adjusting screw 10 turns.



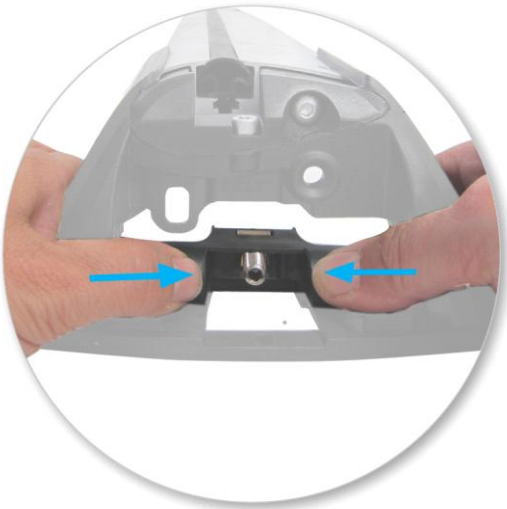
- Press adjusting screw and pull crossbar legs out. Refer to the crossbar instructions for crossbar adjustment.
- Ensure each end of the crossbar is adjusted equally.



- Set bars to length (refer to the crossbar instructions for crossbar adjustment).
- Please check the rear of this manual for information relating specifically to your vehicle.



- Tighten adjusting screw to 5 Nm (3.7 ft lb).



- Remove plastic clamp block by gripping bar leg with fingers and push firmly with thumbs until clamp block drops out behind leg.

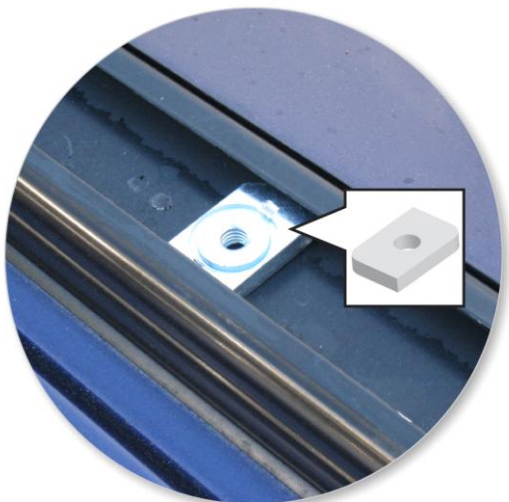


- Select plastic internal block (from fitting kit) and insert into foot.



- Fit rubber pads (supplied with fitting kit) to foot. Pad may vary in shape to that shown.
- Make sure the pad fits into the holes underneath the foot.
- Repeat for all legs.

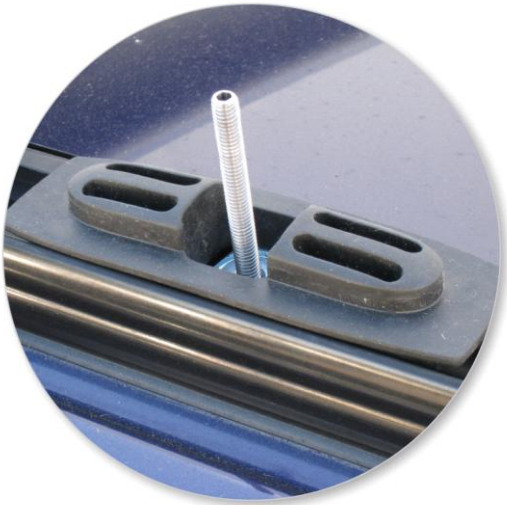
Fitment



- Slide metal T-nuts into tracks on vehicle. Two per track.



- Screw down the grub screws into T-nuts until it hits the track below (this will hold the T-nuts in position).
- Repeat for all four positions.



- Place ditch mould inserts over grub screws.
- Repeat for all four positions.



- Place crossbar foot over grub screws.



- Tighten the red plastic knob.
- Repeat for all four positions.
- In the fully tightened position, the knobs should be parallel with the vehicle.



- Check crossbar is securely attached to the vehicle.
- Use keys to fit and lock covers

CAUTION:
Recheck all fasteners immediately after a load is applied to the crossbars.
Regularly check screws are tight.

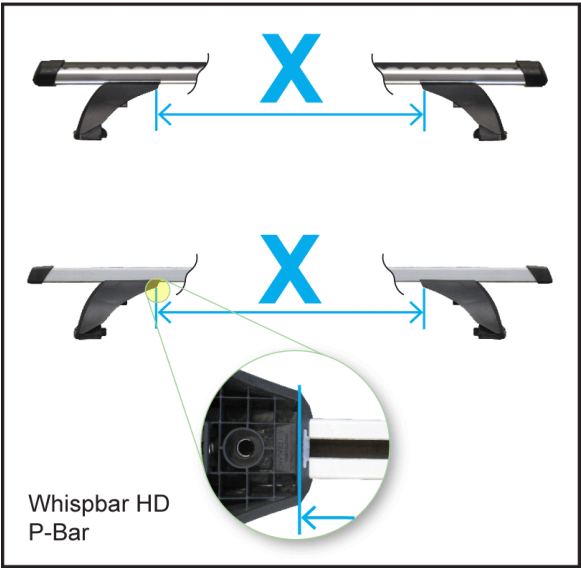
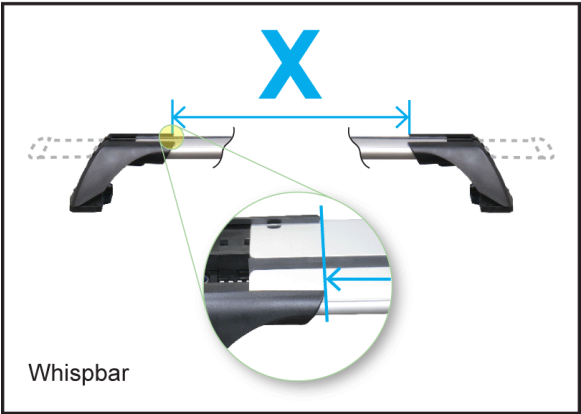
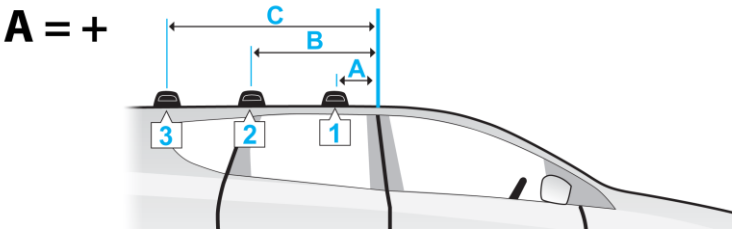
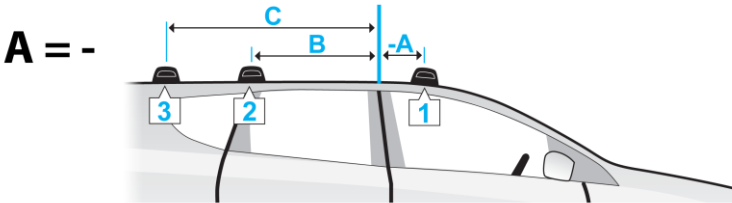
Maintenance

- Clean the car roof and surfaces of the product that will be in contact with the car roof.
- Follow the fitting instructions for fitting the product to your vehicle. Make sure all steps are carried out in order.
- Set crossbars a minimum distance of 700mm (27 1/2") apart where no other distance is specified in the fitting instructions. This is especially important when carrying long loads.
- Check unit is securely attached whenever you refit it to the vehicle. If the unit feels loose, refer to the fitting instructions and readjust.
- Some glass/panoramic roofs and radio antennae may not be able to be used when the product is fitted.
- Do not modify this product.
- Refer to the maximum permitted load capacity specified in the fitting instructions. Do not exceed the vehicle manufacturers roof load rating if it is lower than the maximum load capacity specified in the fitting instructions.
- Loads should not overhang the sides of the product and be evenly distributed with the lowest possible centre of gravity.
- Long loads should be secured with non-elastic straps to the front and rear of the vehicle.
- Objects with pointed ends (e.g. ski poles) should be carried with the pointed ends to the rear of the vehicle.
- Remove all loose or removable objects from the load prior to loading.
- Make sure all loads are securely fastened with non-elastic straps. Check regularly during longer journeys.

- A loaded roof rack system can alter the performance of your vehicle. Be especially aware of the effects of side winds, changing of direction, and braking performance. Avoid rapid acceleration and deceleration. Drive carefully.
- Note that the total height of the vehicle increases when upright loads are carried.
- Products should be locked during transport if they have locks fitted.
- Check and replace worn out or defective parts.
- Keep the product clean and maintained.
- Never drive into a car wash with the roof rack system fitted.
- Lubricate locks and adjusting screws at regular intervals.
- Remove the products from the vehicle when not in use. Make sure all loose parts are stored safely.

- Hubco Automotive Ltd
P. O. Box 11017
Christchurch
NEW ZEALAND

www.whispbar.com
www.whispbar.com.au
www.whispbar.co.nz
www.whispbar.co.uk
www.whispbar.co.za
www.whispbar.eu
www.whispbar.ca



- Toyota 4 Runner , 5dr SUV 96- 02 (EU)
- Toyota Hilux Surf, 5dr SUV 96- 02 (EU)
- Toyota Hilux Surf, 5dr SUV 96- 03 (ZA)
- Toyota Hilux Surf, 5dr SUV Aug 95-Aug 02 (NZ)

X					
A	B	C	1	2	3
420mm	1340mm	-	756mm	756mm	-
16 9/16ths"	52 3/4"	-	29 3/4"	29 3/4"	-
420mm	1340mm	-	756mm	756mm	-
16 9/16ths"	52 3/4"	-	29 3/4"	29 3/4"	-
420mm	1340mm	-	756mm	756mm	-
16 9/16ths"	52 3/4"	-	29 3/4"	29 3/4"	-
420mm	1340mm	-	756mm	756mm	-
16 9/16ths"	52 3/4"	-	29 3/4"	29 3/4"	-