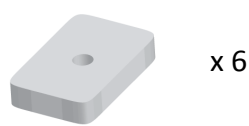
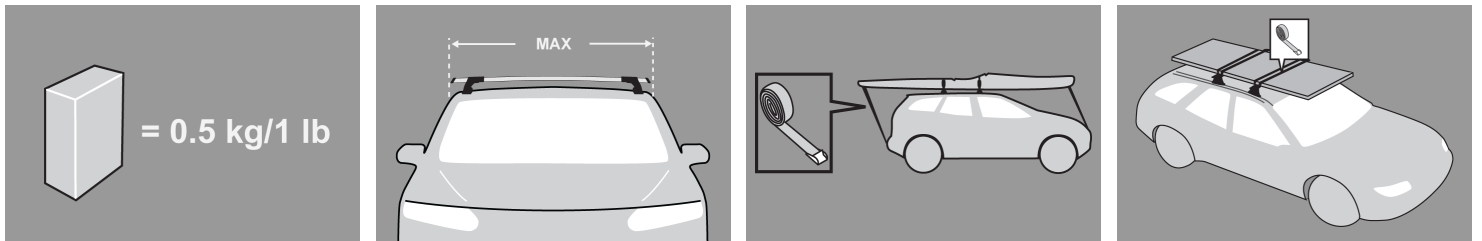


GB Fitting Instruction for Accessory





MAX kgs

🚩 W/P WHD

Citroen
Jumpy , 5dr Van 07-+
Jumpy , 5dr Van 07-+
Fiat
Scudo , 5dr Van 07-+
Scudo , 5dr Van 07-+
Peugeot
Expert , 5dr Van 07-
Expert , 5dr Van 07-+

	EU	75	100
	AU	75	100
	EU	175	100
	AU	175	100
	EU	75	100
	AU	75	100

Jumpy , 5dr Van 07-+

Scudo , 5dr Van 07-+

Expert , 5dr Van 07-+

MAX kgs

🚩 W/P WHD

	NZ	75	100
	NZ	175	100
	NZ	75	100

First Time Installation



- Remove parts from inside the package and check. Contact your dealer if any parts are missing or damaged.



- This kit fits type A, B, C and D.
- These instructions show type B crossbar fitted. They also apply to type A, C and D.



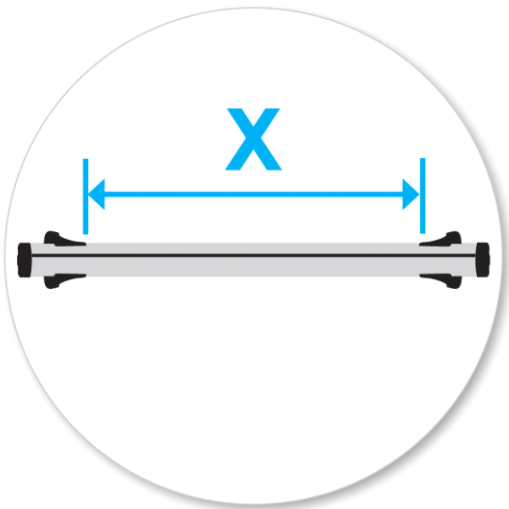
- Use keys to remove covers.



- Use hex screwdriver to reverse adjusting screw 10 turns.



- Press adjusting screw and pull crossbar legs out. Refer to the crossbar instructions for crossbar adjustment.
- Ensure each end of the crossbar is adjusted equally.



- Set bars to length (refer to the crossbar instructions for crossbar adjustment).
- Please check the rear of this manual for information relating specifically to your vehicle.



- Tighten adjusting screw to 5 Nm (3.7 ft lb).



- Remove plastic clamp block by gripping bar leg with fingers and push firmly with thumbs until clamp block drops out behind leg.



- Select plastic internal block (from fitting kit) and insert into foot.
- Repeat for all legs.



- Fit rubber pad (supplied with crossbar) to foot.
- Make sure the pad fits into the holes underneath the foot.



- Apply protective strip as shown. Trim if required.

Fitment



- Slide nut under fixed-point mount



- Place crossbar foot over fixed-point mount.



- Tighten the red plastic knob.
- Do not over tighten.



- Ensure the red plastic knob is in the position shown when fully tightened.
- Repeat for all legs.



- Check crossbar is securely attached to the vehicle.
- Use keys to fit and lock covers

CAUTION:
Recheck all fasteners immediately after a load is applied to the crossbars.
Regularly check screws are tight.

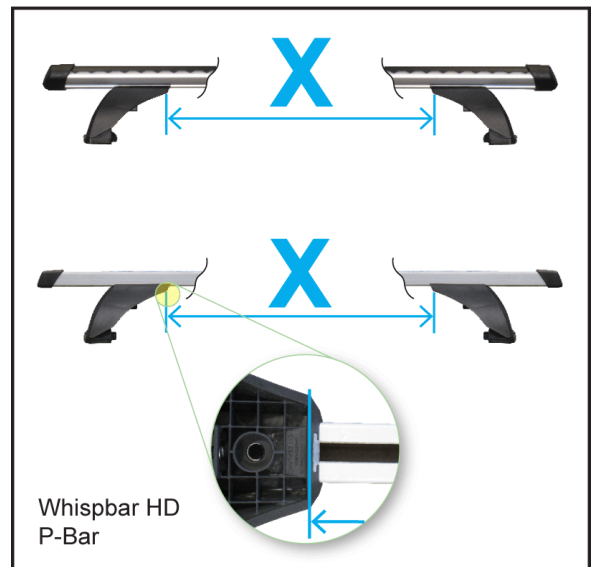
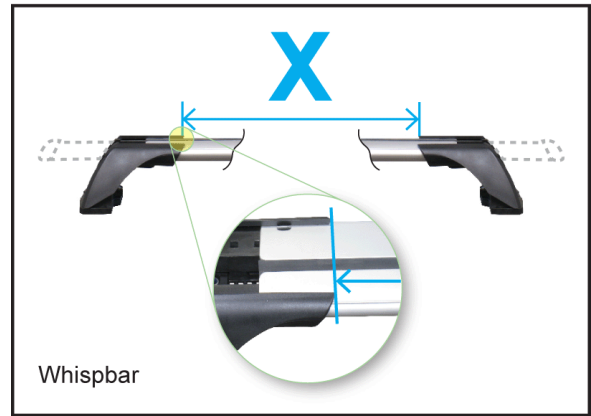
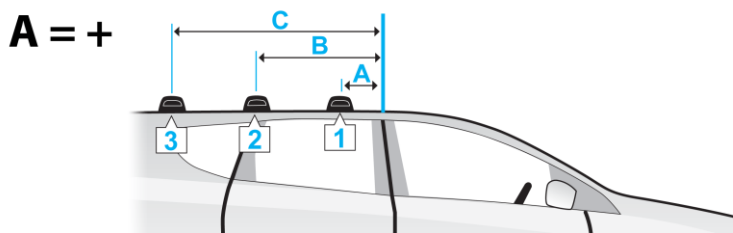
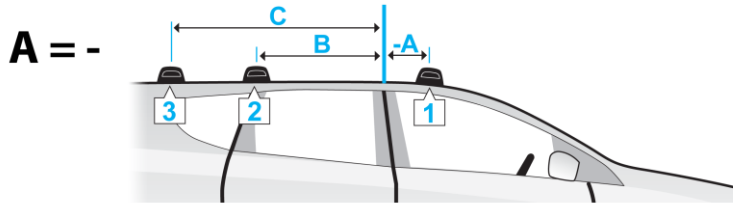
Maintenance

- Clean the car roof and surfaces of the product that will be in contact with the car roof.
- Follow the fitting instructions for fitting the product to your vehicle. Make sure all steps are carried out in order.
- Set crossbars a minimum distance of 700mm (27 1/2") apart where no other distance is specified in the fitting instructions. This is especially important when carrying long loads.
- Check unit is securely attached whenever you refit it to the vehicle. If the unit feels loose, refer to the fitting instructions and readjust.
- Some glass/panoramic roofs and radio antennae may not be able to be used when the product is fitted.
- Do not modify this product.
- Refer to the maximum permitted load capacity specified in the fitting instructions. Do not exceed the vehicle manufacturers roof load rating if it is lower than the maximum load capacity specified in the fitting instructions.
- Loads should not overhang the sides of the product and be evenly distributed with the lowest possible centre of gravity.
- Long loads should be secured with non-elastic straps to the front and rear of the vehicle.
- Objects with pointed ends (e.g. ski poles) should be carried with the pointed ends to the rear of the vehicle.
- Remove all loose or removable objects from the load prior to loading.
- Make sure all loads are securely fastened with non-elastic straps. Check regularly during longer journeys.

- A loaded roof rack system can alter the performance of your vehicle. Be especially aware of the effects of side winds, changing of direction, and braking performance. Avoid rapid acceleration and deceleration. Drive carefully.
- Note that the total height of the vehicle increases when upright loads are carried.
- Products should be locked during transport if they have locks fitted.
- Check and replace worn out or defective parts.
- Keep the product clean and maintained.
- Never drive into a car wash with the roof rack system fitted.
- Lubricate locks and adjusting screws at regular intervals.
- Remove the products from the vehicle when not in use. Make sure all loose parts are stored safely.

-
- Hubco Automotive Ltd
P. O. Box 11017
Christchurch
NEW ZEALAND

www.whispbar.com
www.whispbar.com.au
www.whispbar.co.nz
www.whispbar.co.uk
www.whispbar.co.za
www.whispbar.eu
www.whispbar.ca



	A	B	C	X		
				1	2	3
Citroen Jumpy , 5dr Van 07+(AU)	600mm 23 5/8"	1380mm 54 5/16ths"	2100mm 82 11/16ths"	1080mm 42 1/2"	1055mm 41 9/16ths"	1035mm 40 3/4"
Citroen Jumpy , 5dr Van 07+(EU)	600mm 23 5/8"	1380mm 54 5/16ths"	2100mm 82 11/16ths"	1080mm 42 1/2"	1055mm 41 9/16ths"	1035mm 40 3/4"
Citroen Jumpy , 5dr Van 07+(NZ)	600mm 23 5/8"	1380mm 54 5/16ths"	2100mm 82 11/16ths"	1080mm 42 1/2"	1055mm 41 9/16ths"	1035mm 40 3/4"
Fiat Scudo , 5dr Van 07+(AU)	600mm 23 5/8"	1380mm 54 5/16ths"	2100mm 82 11/16ths"	1080mm 42 1/2"	1055mm 41 9/16ths"	1035mm 40 3/4"
Fiat Scudo , 5dr Van 07+(AU)	600mm 23 5/8"	1380mm 54 5/16ths"	2100mm 82 11/16ths"	1000mm 39 3/8"	1055mm 41 9/16ths"	1035mm 40 3/4"
Fiat Scudo , 5dr Van 07+(EU)	600mm 23 5/8"	1380mm 54 5/16ths"	2100mm 82 11/16ths"	1080mm 42 1/2"	1055mm 41 9/16ths"	1035mm 40 3/4"
Fiat Scudo , 5dr Van 07+(EU)	600mm 23 5/8"	1380mm 54 5/16ths"	2100mm 82 11/16ths"	1000mm 39 3/8"	1055mm 41 9/16ths"	1035mm 40 3/4"
Fiat Scudo , 5dr Van 07+(NZ)	600mm 23 5/8"	1380mm 54 5/16ths"	2100mm 82 11/16ths"	1080mm 42 1/2"	1055mm 41 9/16ths"	1035mm 40 3/4"
Fiat Scudo , 5dr Van 07+(NZ)	600mm 23 5/8"	1380mm 54 5/16ths"	2100mm 82 11/16ths"	1000mm 39 3/8"	1055mm 41 9/16ths"	1035mm 40 3/4"
Peugeot Expert , 5dr Van 07- (EU)	600mm 23 5/8"	1380mm 54 5/16ths"	2100mm 82 11/16ths"	1080mm 42 1/2"	1055mm 41 9/16ths"	1035mm 40 3/4"
Peugeot Expert , 5dr Van 07+(AU)	600mm 23 5/8"	1380mm 54 5/16ths"	2100mm 82 11/16ths"	1080mm 42 1/2"	1055mm 41 9/16ths"	1035mm 40 3/4"
Peugeot Expert , 5dr Van 07+(NZ)	600mm 23 5/8"	1380mm 54 5/16ths"	2100mm 82 11/16ths"	1080mm 42 1/2"	1055mm 41 9/16ths"	1035mm 40 3/4"