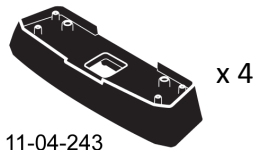
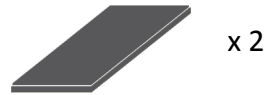
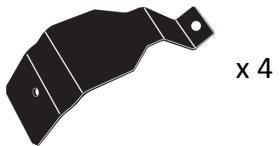
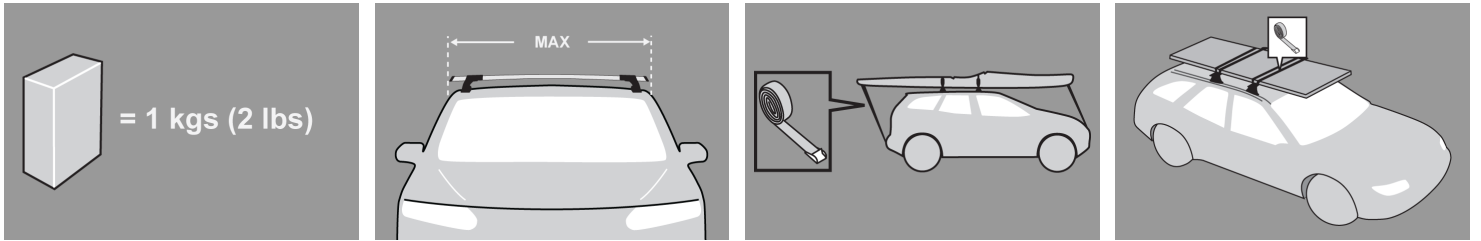


**GB** Fitting Instructions for Basic Carrier



11-04-243

xx kg/lb + [ ] + [ ] = **MAX**  
kgs (lbs)



## MAX kgs (lbs)



**W/P**

**WHD**

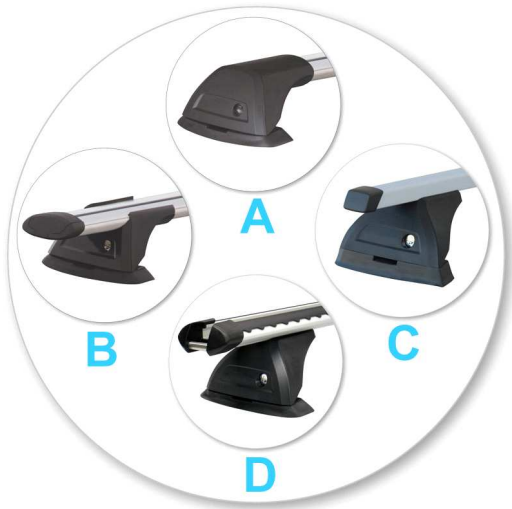
### Nissan

Navara D40 Double Cab, 4dr Truck 05-+	US	75 kgs (165 lbs)	75 kgs (165 lbs)
Navara D40 Double Cab, 4dr Ute 05-+	EU	75 kgs (165 lbs)	75 kgs (165 lbs)
Navara D40 Double Cab, 4dr Ute Dec 05-+	NZ	75 kgs (165 lbs)	75 kgs (165 lbs)
Navara D40 Double Cab, 4dr Ute Nov 05-+	AU	75 kgs (165 lbs)	75 kgs (165 lbs)
Pathfinder , 5dr SUV 05-+	EU	75 kgs (165 lbs)	75 kgs (165 lbs)
Pathfinder R51 ST, 5dr SUV Jul 05-+	AU	75 kgs (165 lbs)	75 kgs (165 lbs)
Pathfinder R51, 5dr SUV 05-+	US	75 kgs (165 lbs)	75 kgs (165 lbs)

## First Time Installation



- Remove parts from inside the package and check. Contact your dealer if any parts are missing or damaged.



- This kit fits type A, B, C and D.
- These instructions show type A crossbar fitted. They also apply to type B, C and D.

- **ATTENTION: NISSAN NAVARA D40 ONLY**  
Weather sealing cannot be guaranteed due to manufacturer's assembly variations. If this is of concern please use K603 permanent mount fitting kit.

**NOTE: Clamp images in these instructions may not be representative of the clamps in this kit**



- Use keys to remove covers.



- Use hex screwdriver to reverse adjusting screw 10 turns.



- Press adjusting screw and pull crossbar legs out. Refer to the crossbar instructions for crossbar adjustment.
- Ensure each end of the crossbar is adjusted equally.



- Remove locking screw.



- A= Clear  
B= Grey
- Cut grey protective strip in two equal lengths.
- Apply protective strip as shown.  
Trim if required.



- Attach clamp to each leg. NOTE; clamps may have labels showing their positions on the vehicle (For example; "Front Right").



- Refit locking screw so that it goes through the hole in the clamp. Do not begin to tighten the locking screw.



- Fit rubber pads (supplied with fitting kit) to foot. Pad may vary in shape to that shown.



- Make sure the pad fits into the holes underneath the foot.

## Fitment



- Place crossbar on vehicle. Minimum recommended spacing between the bars is 700mm (27 1/2") (unless otherwise stated).
- Clamps to vehicle using body clips.
- Please check the rear of this manual for information relating specifically to your vehicle.



- Pull down rubber and slide body clip up and over the interior trim. Refit the rubber over the clip.



- Adjust the legs on the crossbar so that they are positioned equally from the ends of the crossbar, and the clamps engage firmly on the body work of the vehicle.

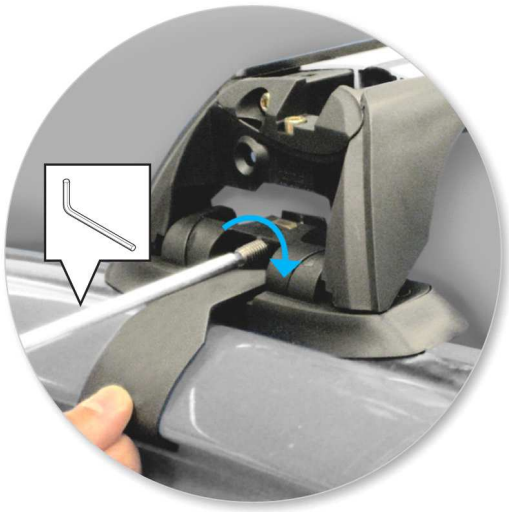


- Clamp locates onto the body clip as shown.



- Tighten adjusting screw to 5 Nm (3.7 ft lb).





- Tighten locking screw on both legs evenly.



- Check crossbar is securely attached to the vehicle.



- Use keys to fit and lock covers

**CAUTION:**

**Recheck all fasteners immediately after a load is applied to the crossbars.**

**Regularly check screws are tight.**

---

## Maintenance

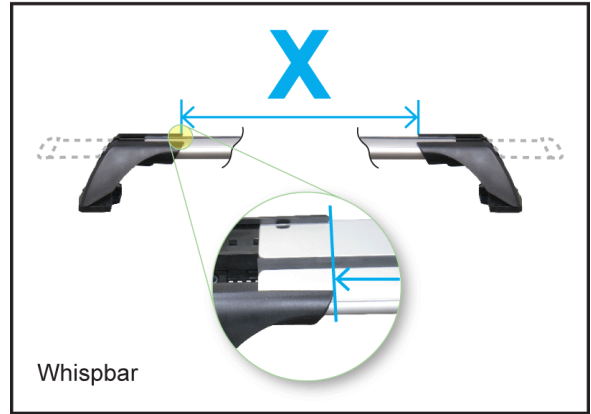
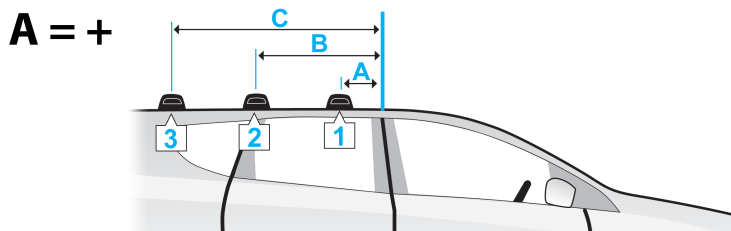
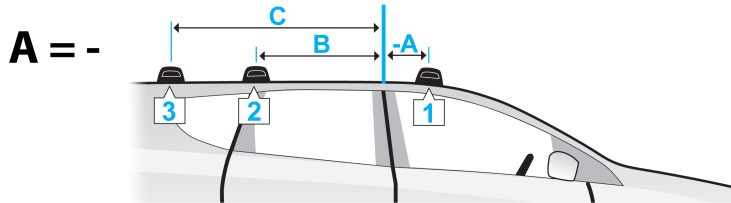
- Clean the car roof and surfaces of the product that will be in contact with the car roof.
- Follow the fitting instructions for fitting the product to your vehicle. Make sure all steps are carried out in order.
- Set crossbars a minimum distance of 700mm (27 1/2") apart where no other distance is specified in the fitting instructions. This is especially important when carrying long loads.
- Check unit is securely attached whenever you refit it to the vehicle. If the unit feels loose, refer to the fitting instructions and readjust.
- Some glass/panoramic roofs and radio antennae may not be able to be used when the product is fitted.
- Do not modify this product.
- Refer to the maximum permitted load capacity specified in the fitting instructions. Do not exceed the vehicle manufacturers roof load rating if it is lower than the maximum load capacity specified in the fitting instructions.
- Loads should not overhang the sides of the product and be evenly distributed with the lowest possible centre of gravity.
- Long loads should be secured with non-elastic straps to the front and rear of the vehicle.
- Objects with pointed ends (e.g. ski poles) should be carried with the pointed ends to the rear of the vehicle.
- Remove all loose or removable objects from the load prior to loading.
- Make sure all loads are securely fastened with non-elastic straps. Check regularly during longer journeys.

- A loaded roof rack system can alter the performance of your vehicle. Be especially aware of the effects of side winds, changing of direction, and braking performance. Avoid rapid acceleration and deceleration. Drive carefully.
- Note that the total height of the vehicle increases when upright loads are carried.
- Products should be locked during transport if they have locks fitted.
- Check and replace worn out or defective parts.
- Keep the product clean and maintained.
- Never drive into a car wash with the roof rack system fitted.
- Lubricate locks and adjusting screws at regular intervals.
- Remove the products from the vehicle when not in use. Make sure all loose parts are stored safely.

- 
- Yakima Australia Pty Ltd  
17 Hinkler Court  
Brendale QLD 4500  
AUSTRALIA

[www.whispbar.com](http://www.whispbar.com)  
[www.whispbar.com.au](http://www.whispbar.com.au)  
[www.whispbar.co.nz](http://www.whispbar.co.nz)  
[www.whispbar.co.uk](http://www.whispbar.co.uk)  
[www.whispbar.co.za](http://www.whispbar.co.za)  
[www.whispbar.eu](http://www.whispbar.eu)  
[www.whispbar.ca](http://www.whispbar.ca)

---



	A	B	C	X		
				1	2	3
Nissan Navara D40 Double Cab, 4dr Truck 05+ (US)	-180mm -7 1/16ths"	520mm 20 1/2"	-	970mm 38 3/16ths"	970mm 38 3/16ths"	-
Nissan Navara D40 Double Cab, 4dr Ute 05+ (EU)	-180mm -7 1/16ths"	520mm 20 1/2"	-	970mm 38 3/16ths"	970mm 38 3/16ths"	-
Nissan Navara D40 Double Cab, 4dr Ute Dec 05+ (NZ)	-180mm -7 1/16ths"	520mm 20 1/2"	-	970mm 38 3/16ths"	970mm 38 3/16ths"	-
Nissan Navara D40 Double Cab, 4dr Ute Nov 05+ (AU)	-180mm -7 1/16ths"	520mm 20 1/2"	-	970mm 38 3/16ths"	970mm 38 3/16ths"	-
Nissan Pathfinder , 5dr SUV 05+ (EU)	-230mm -9 1/16ths"	470mm 18 1/2"	-	995mm 39 3/16ths"	990mm 39 "	-
Nissan Pathfinder R51 ST, 5dr SUV Jul 05+ (AU)	-230mm -9 1/16ths"	470mm 18 1/2"	-	995mm 39 3/16ths"	990mm 39 "	-
Nissan Pathfinder R51, 5dr SUV 05+ (US)	-230mm -9 1/16ths"	470mm 18 1/2"	-	995mm 39 3/16ths"	990mm 39 "	-