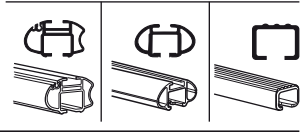
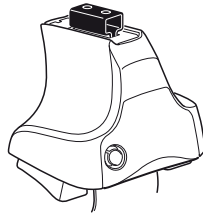


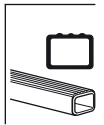
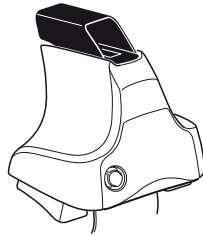
# Kit 1084

FORD Ka, 3-dr Hatchback, 97-08

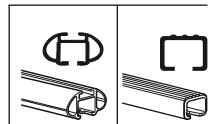
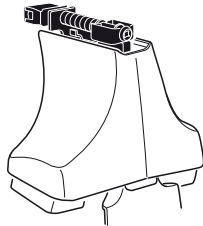
480R  
754



480



750



xx kg  
 xx lbs  
 + 7 kg / 15,4 lbs  
 = 3 kg / 6,6 lbs

**Max. 65kg**  
**Max. 143 lbs**

80 km/h  
 50 Mph  
 130 km/h  
 80 Mph  
 40 km/h  
 25 Mph  
**km/h**  
**Mph**

**THULE**

**Kit XXXX**  
 instructions

x1

x4

x4

x4  
 x4

**480R/754**

x1

x4

x4

x4

**480**

x1

x4

x4

**750**

x2 x2 x2 x4	x2	x2 x2 x4 x4	x2 x2	x2
----------------------	----	----------------------	----------	----

116 x2

120 x2

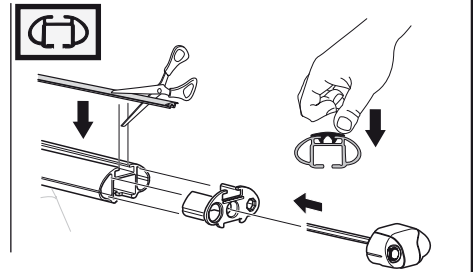
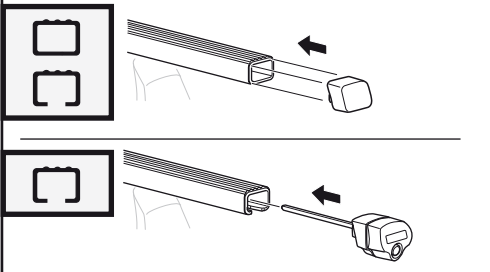
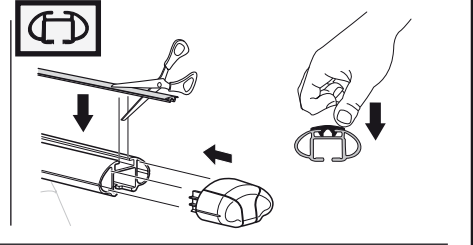
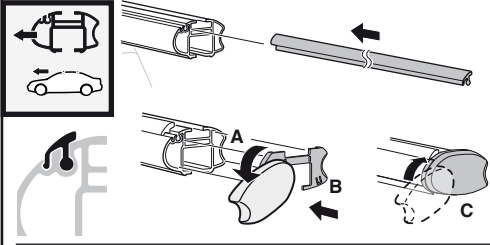
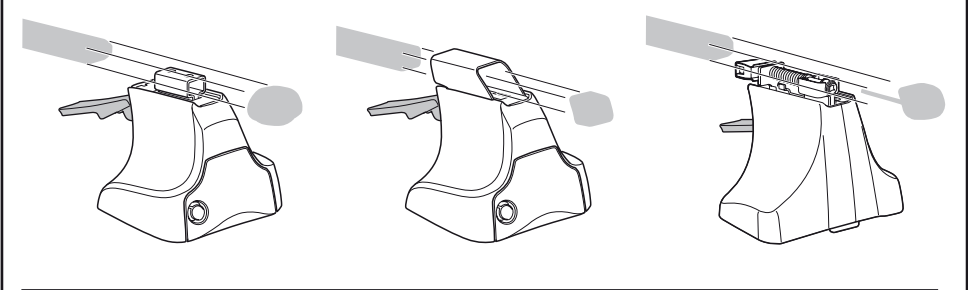
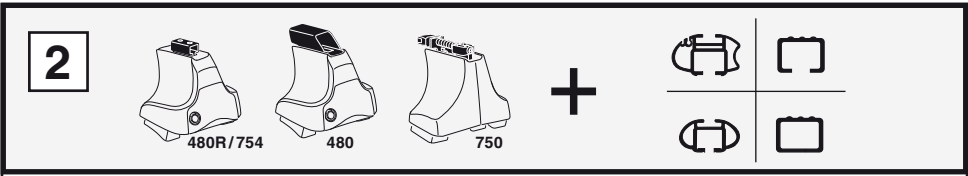
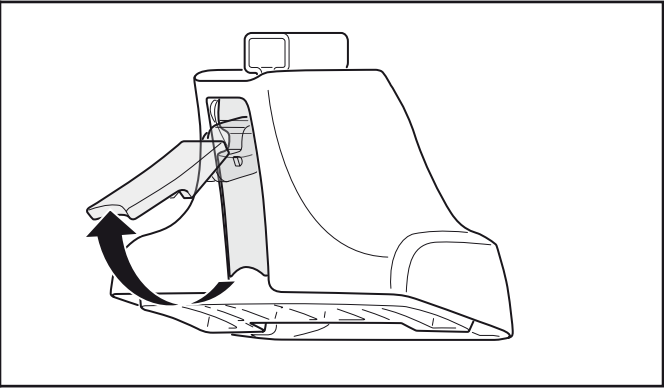
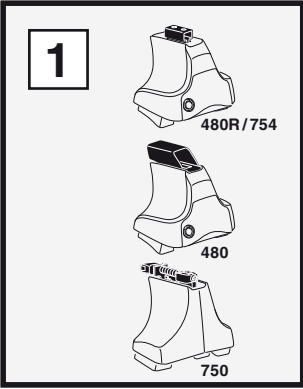
28 x2

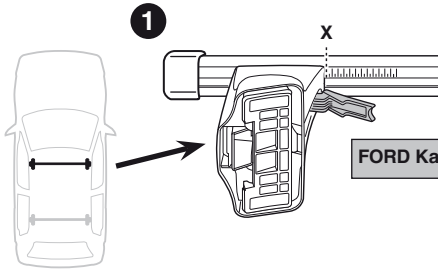
41 x1

42 x1

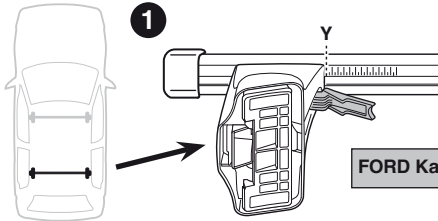
x1

**Kit**

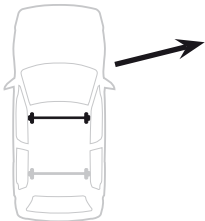
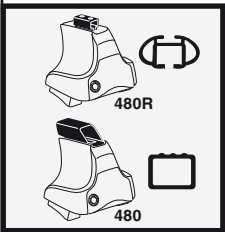




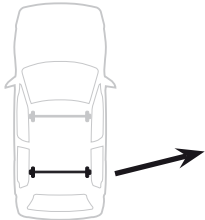
<b>1</b>	<b>FORD Ka, 3-dr Hatchback, 97-08</b>	<b>X</b>
		<b>19</b>



<b>1</b>	<b>FORD Ka, 3-dr Hatchback, 97-08</b>	<b>Y</b>
		<b>16</b>



<b>1</b>	<b>FORD Ka, 3-dr Hatchback, 97-08</b>	<b>X inch</b>	<b>X mm</b>
		<b>33 1/8"</b>	<b>841 mm</b>

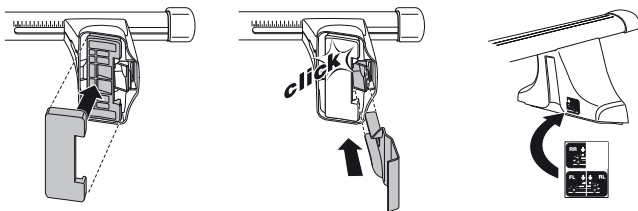
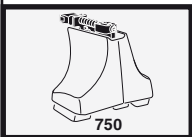
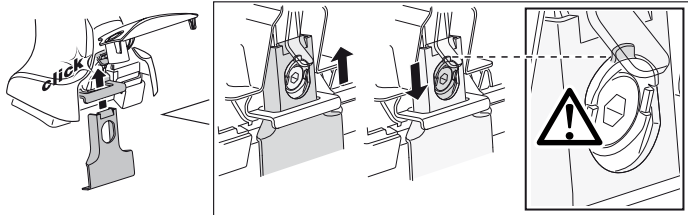
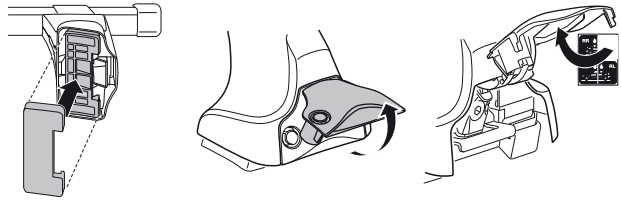
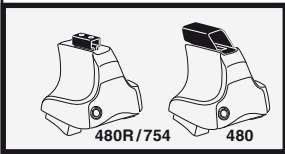
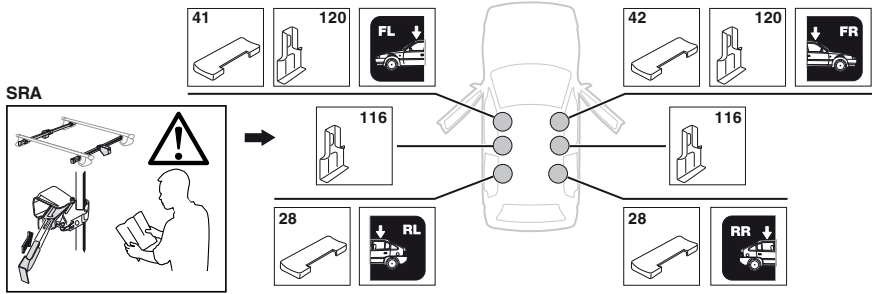


<b>1</b>	<b>FORD Ka, 3-dr Hatchback, 97-08</b>	<b>Y inch</b>	<b>Y mm</b>
		<b>31 7/8"</b>	<b>811 mm</b>



4

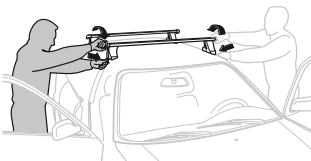
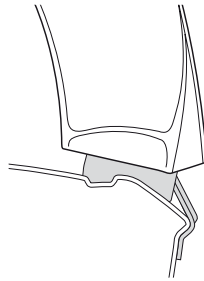
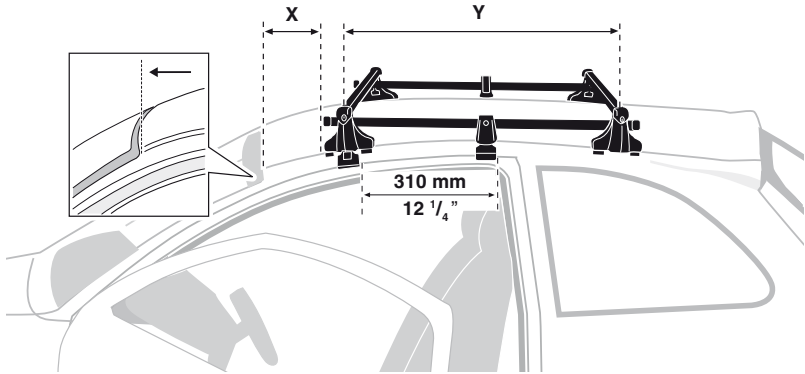
FORD Ka, 3-dr Hatchback, 97-08



5



	X mm	Y mm	X inch	Y inch
FORD Ka, 3-dr Hatchback, 97-08	210 mm	700 mm	8 1/4"	27 1/2"



- GB/US Tighten alternately
- D Die Schrauben abwechselnd anziehen
- F Serrer alternativement chaque côté
- NL Afwisselend aan de linker- en de rechterkant aandraaien
- I Alternare il serraggio delle viti
- E Apretar alternativamente
- PT Aperte alternadamente
- S Dra åt växelvís
- FIN Kierrä vuorotellen
- EST Pinguldage vaheldumisi
- LAT Pievelciēt pamišus
- LIT Užsukinėkite pakaitomis
- PL Śruby dokręcaj naprzemiennie
- RU Затягивайте попеременно

- CZ Pokrétla bagazníka dokręcaj dokręcaj naprzemiennie.
- SK Dofahujte striedavo
- SLO Privijajte izmenično.
- HR Naizmjenično zategnite
- HU Egymástól függetlenül szorítandó
- GR Σφίγγετε εναλλάξ
- TR Dönüşümlü sıkın

中文 交替拧紧

한국어 번갈아 가며 조이십시오.

日本語 交互に締め付けてください。

ไทย ชันในแบบสลับ

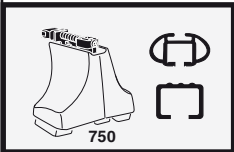
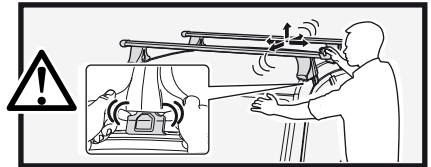
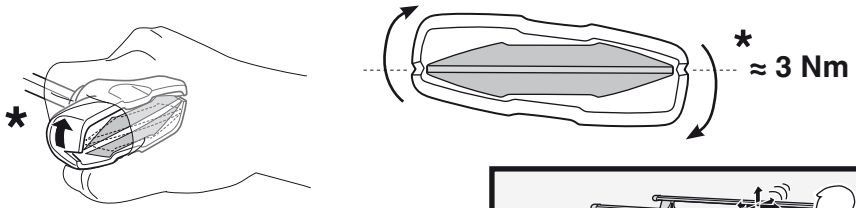
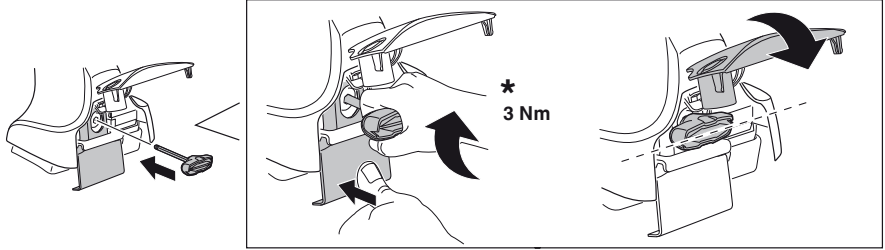
6



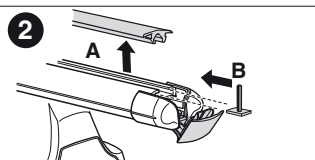
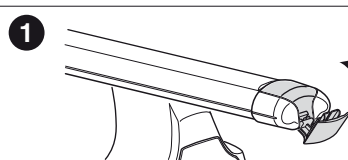
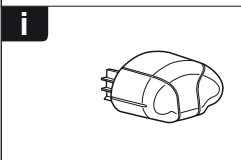
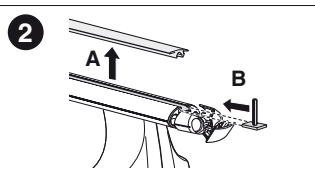
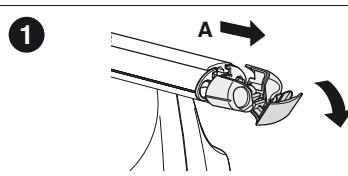
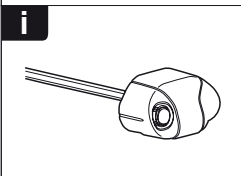
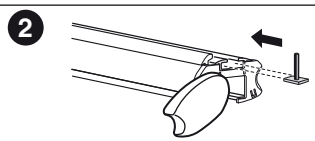
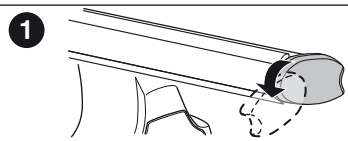
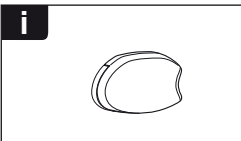
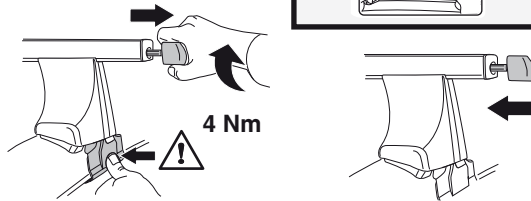
480R/754

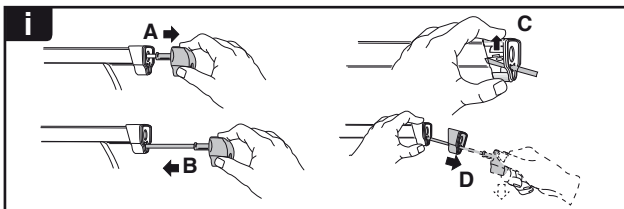
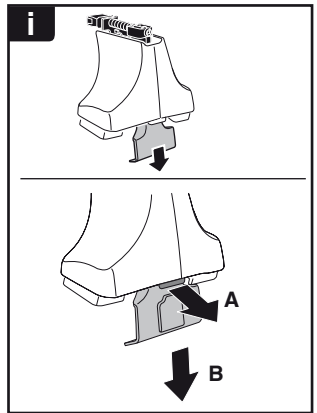
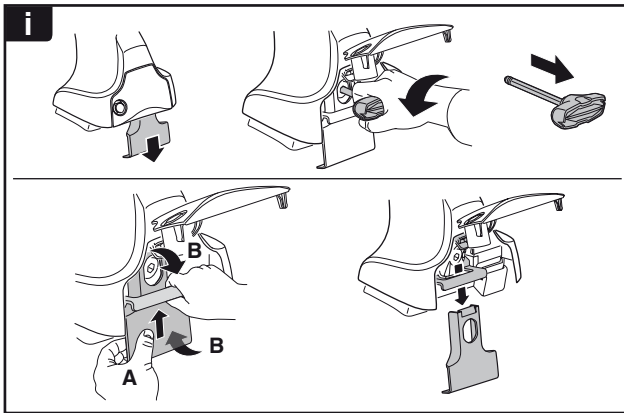
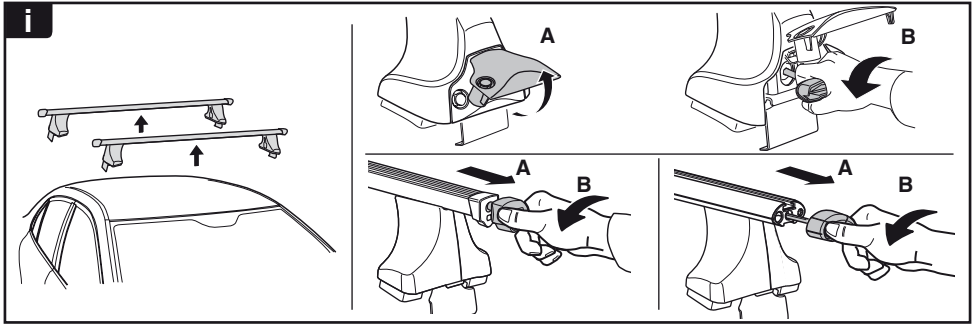


480



750





**THULE**  
SWEDEN  
**ONE  
KEY  
SYSTEM**



		(x4)
		(x6)
		(x8)
NA		(x10)
EUR		(x12)
ASIA		(x12)



WW ▶ Thule Sweden AB, Box 69, 330 33 Hillerstorp, SWEDEN  
NA ▶ Thule Inc., 42 Silvermine Road, Seymour, Connecticut 06483, USA

info@thule.com  
customer.service@thule.com

www.thule.com