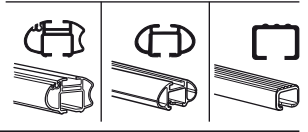
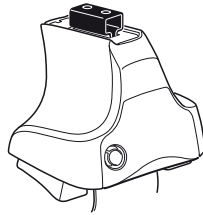


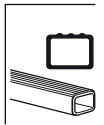
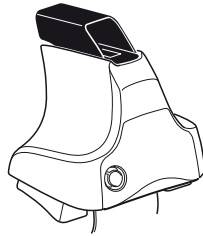
Kit 1094

VW Beetle, 2-dr Coupé, 98-04, 05-

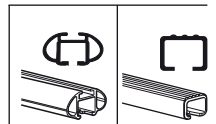
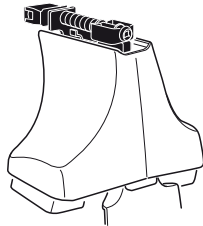
480R
754



480



750



Max. 75kg
Max. 165 lbs

x1

x4

x4

x4

x4

480R/754

x1

x4

x4

x4

480

x1

x4

x4

750

x2 x2 x2 x4	x2	x2 x2 x4 x4	x2 x2	x2

225 x2

226 x2

47 x1

48 x1

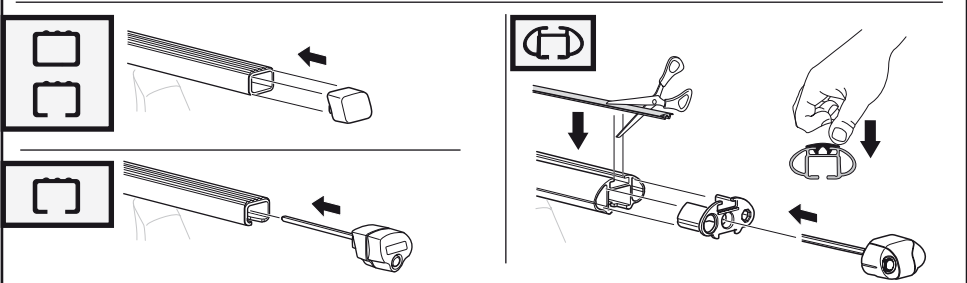
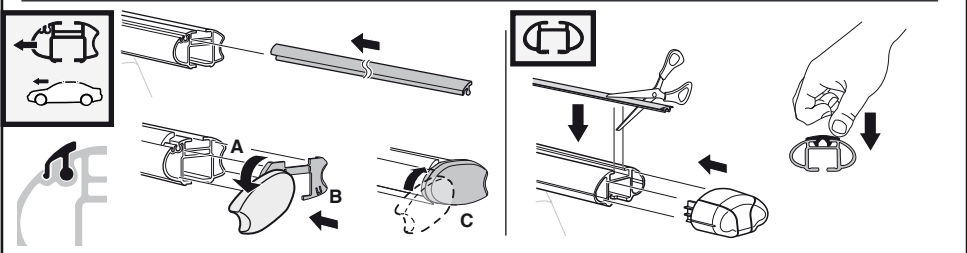
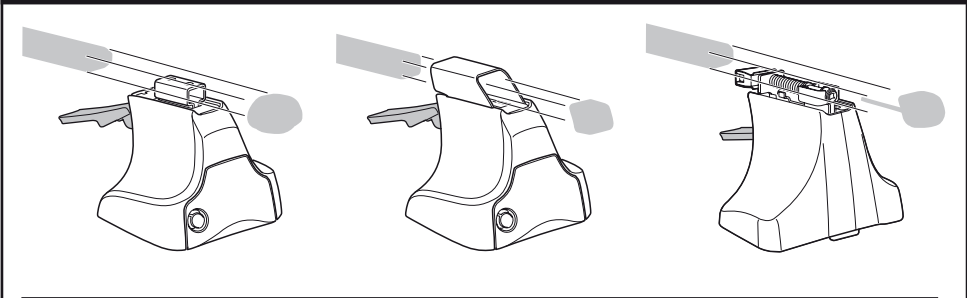
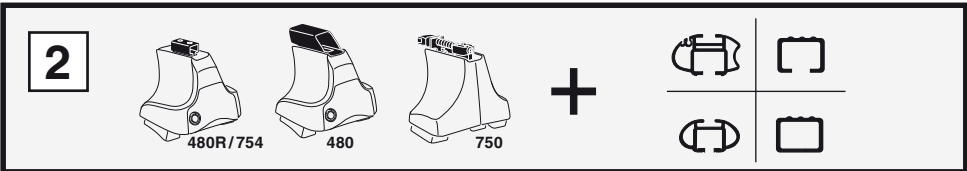
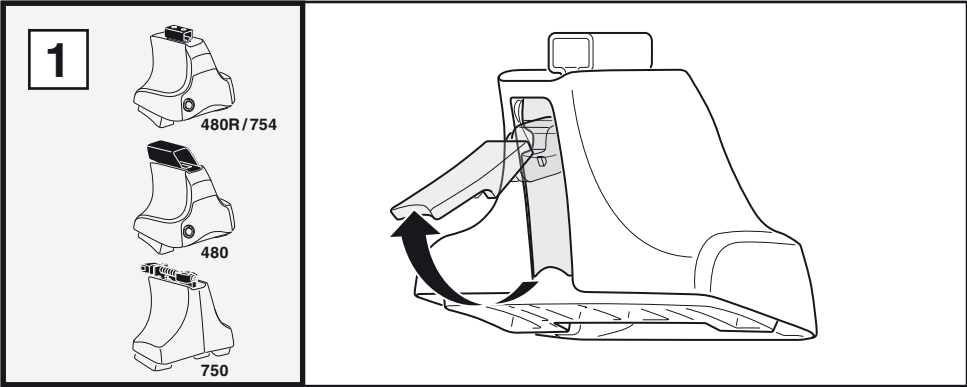
49 x1

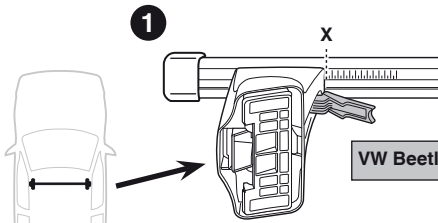
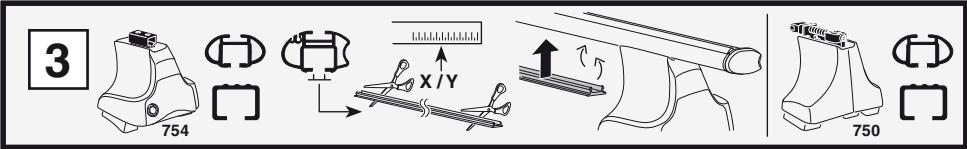
50 x1

x1

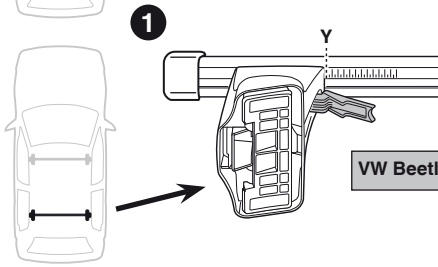
x1

Kit

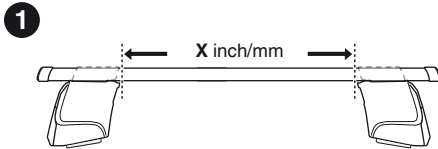
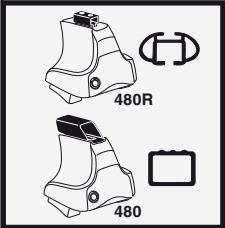




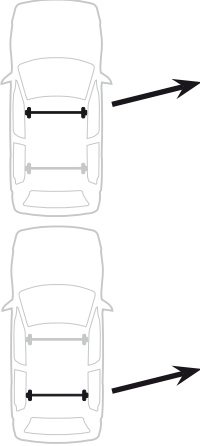
	X
VW Beetle, 2-dr Coupé, 98-04, 05-	33,5



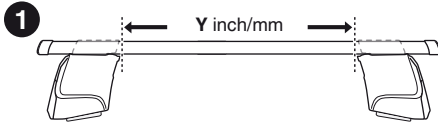
	Y
VW Beetle, 2-dr Coupé, 98-04, 05-	28,5



	X inch	X mm
VW Beetle, 2-dr Coupé, 98-04, 05-	38 7/8"	986 mm

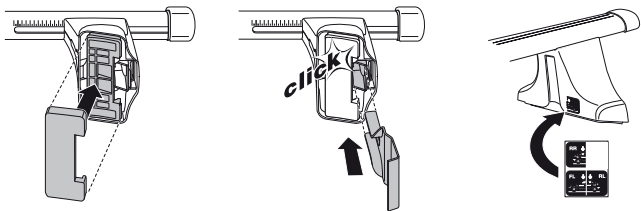
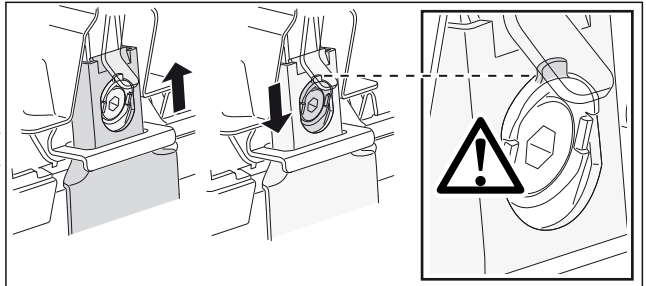
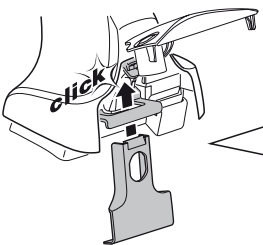
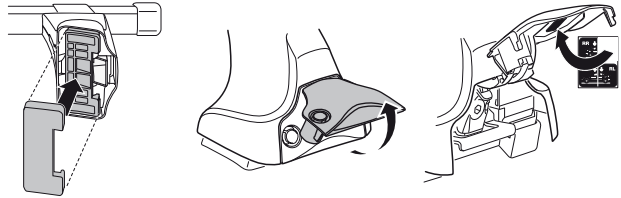
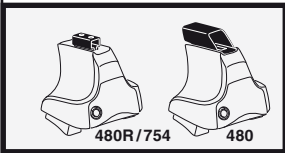
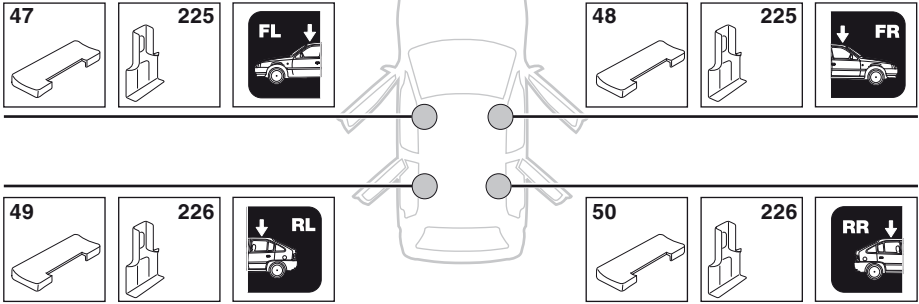


	Y inch	Y mm
VW Beetle, 2-dr Coupé, 98-04, 05-	36 7/8"	936 mm

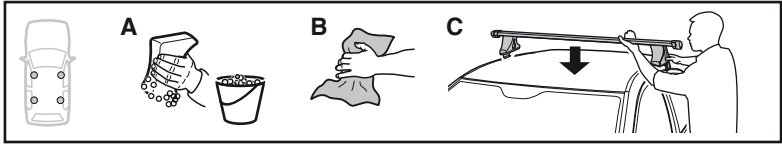


4

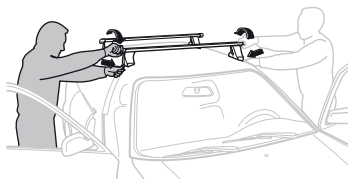
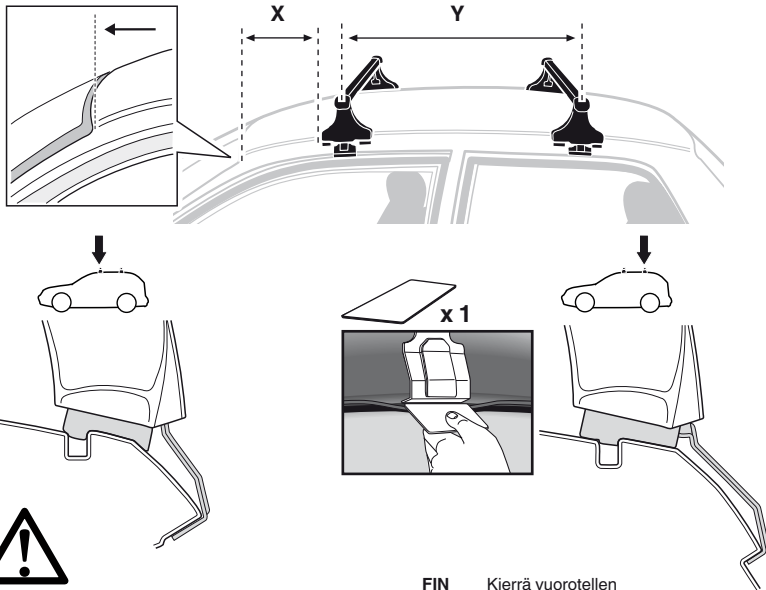
VW Beetle, 2-dr Coupé, 98-04, 05-



5



	X mm	Y mm	X inch	Y inch
VW Beetle, 2-dr Coupé, 98-04, 05-	190 mm	700 mm	7 1/2"	27 1/2"



GB/US Tighten alternately

D Die Schrauben abwechselnd anziehen

F Serrer alternativement chaque côté

NL Afwisselend aan de linker- en de rechterkant aandraaien

I Alternare il serraggio delle viti

E Serrare alternativamente

PT Aperte alternadamente

S Dra åt växelvis

FIN Kierrä vuorotellen

EST Pinguldage vaheldumisi

LAT Pielieciet pamišus

LIT Užsukinėkite pakaitomis

PL Śruby dokręcaj naprzemiennie

RU Затягивайте попеременно

CZ Pokręťta bagażníka dokręcaj dokręcaj naprzemiennie.

SK Doťahujte striedavo

SLO Privijajte izmenično.

HR Naizmjenično zategnite

HU Egymástól függetlenül szorítandó

GR Σφιγγετε εναλλάξ

TR Dönüşümlü sıkın

中文 交替拧紧

한국어 번갈아 가며 조이십시오.

日本語 交互に締め付けてください。

ไทย ชันโนแบบสลับ

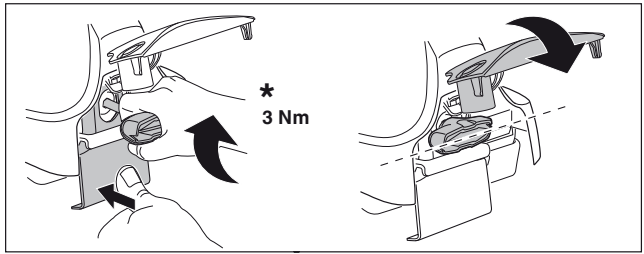
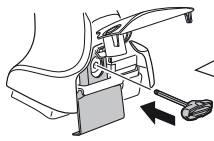
6



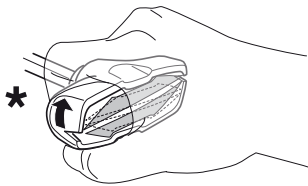
480R/754



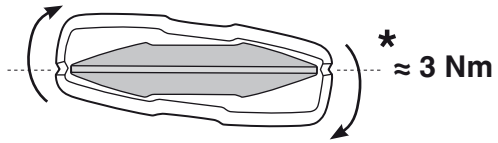
480



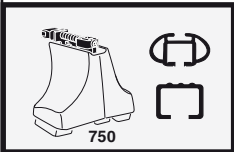
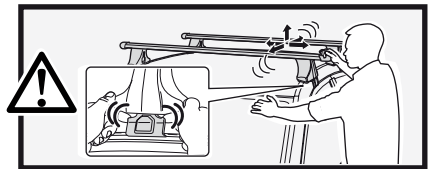
*
3 Nm



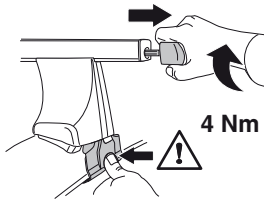
*



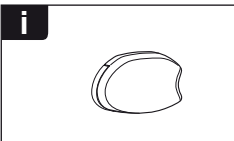
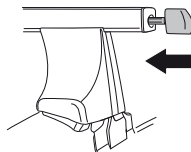
*
≈ 3 Nm



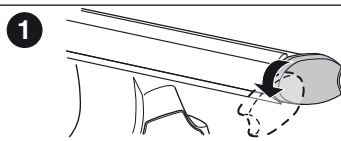
750



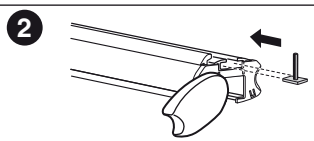
4 Nm



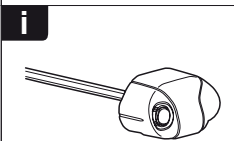
i



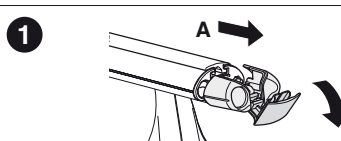
1



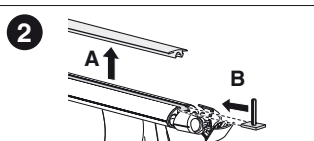
2



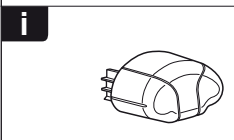
i



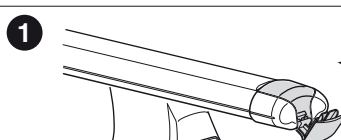
1



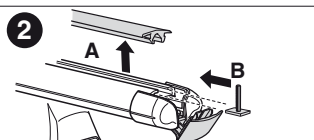
2



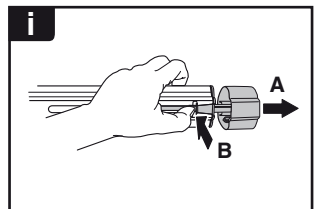
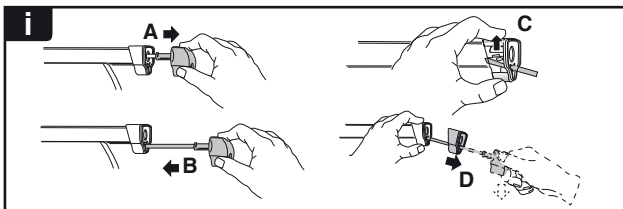
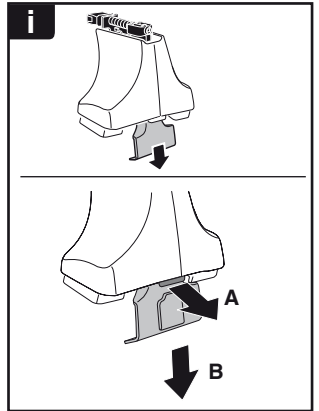
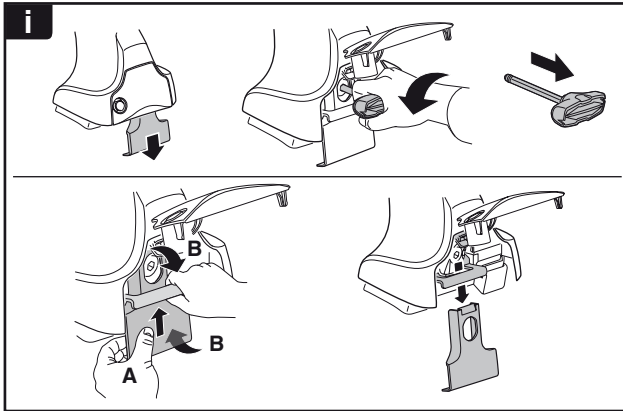
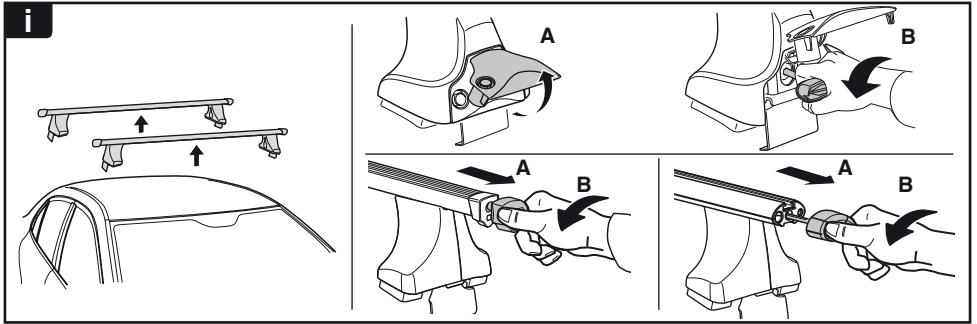
i



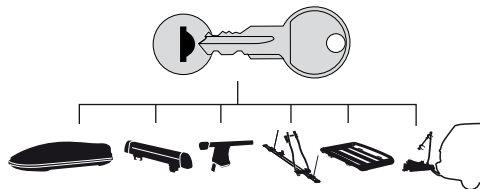
1



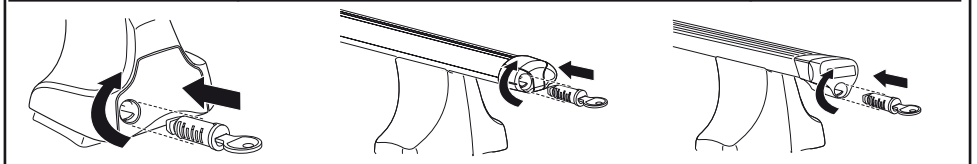
2



THULE
SWEDEN
**ONE
KEY
SYSTEM**



- 544 (x4)
- 596 (x6)
- 588 (x8)
- NA 510 (x10)
- EUR 452 (x12)
- ASIA



WW ▶ Thule Sweden AB, Box 69, 330 33 Hillerstorp, SWEDEN
NA ▶ Thule Inc., 42 Silvermine Road, Seymour, Connecticut 06483, USA

info@thule.com
customer.service@thule.com

www.thule.com