

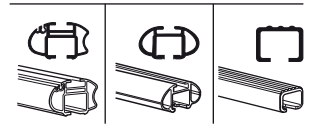
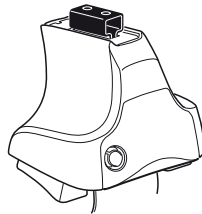
Kit 1271

MAZDA Demio, 5-dr MPV, 02-07 (JPN)*

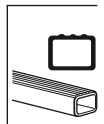
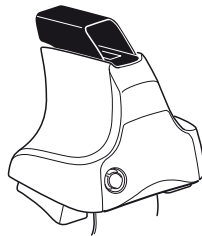
MAZDA 2, 5-dr MPV, 03-07*

* Without roof spoiler

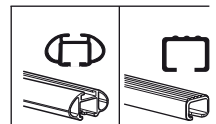
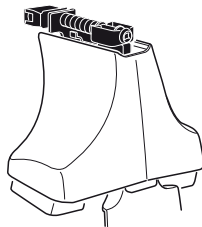
480R
754



480



750

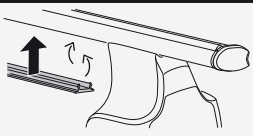
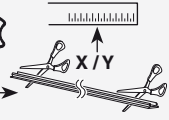
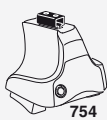


x2	x2	x2	x2	x2
x2	x2	x2	x2	x2
x2	x2	x4	x4	x2
x4		x4		

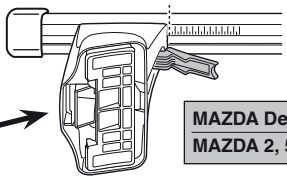
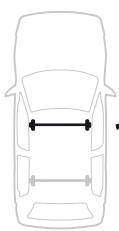
Kit



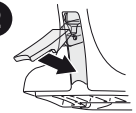
3



1

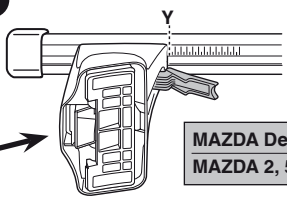


2



	X
MAZDA Demio, 5-dr MPV, 02-07 (JPN)	26
MAZDA 2, 5-dr MPV, 03-07	26

1



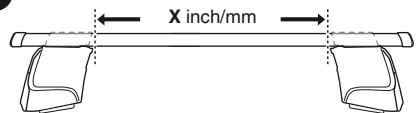
2



	Y
MAZDA Demio, 5-dr MPV, 02-07 (JPN)	25
MAZDA 2, 5-dr MPV, 03-07	25



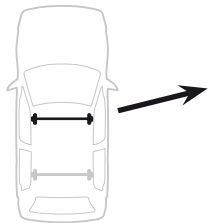
1



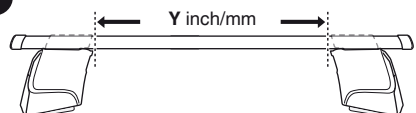
2



	X inch	X mm
MAZDA Demio, 5-dr MPV, 02-07 (JPN)	35 ⁷ / ₈ "	911 mm
MAZDA 2, 5-dr MPV, 03-07	35 ⁷ / ₈ "	911 mm



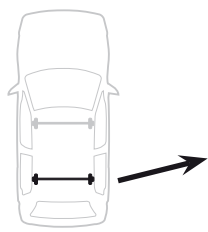
1



2



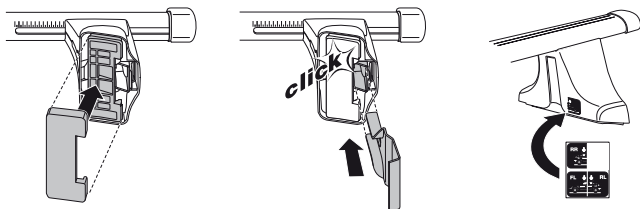
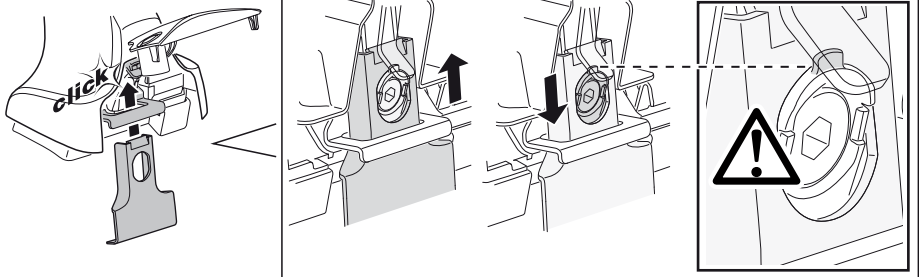
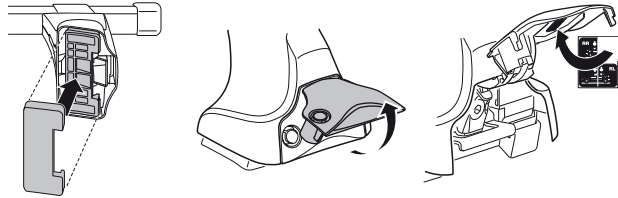
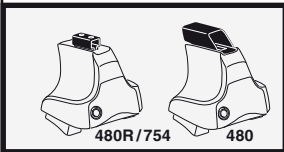
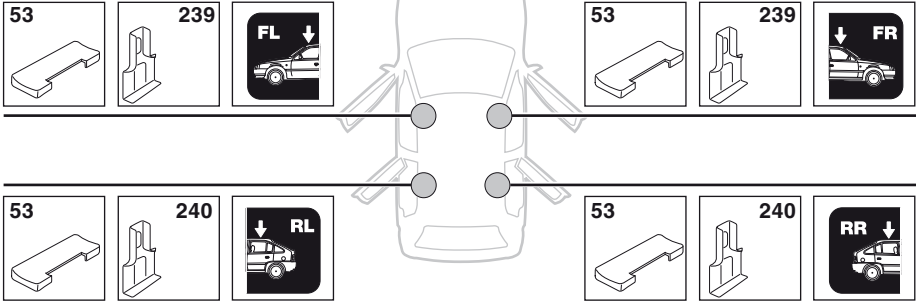
	Y inch	Y mm
MAZDA Demio, 5-dr MPV, 02-07 (JPN)	35 ¹ / ₂ "	901 mm
MAZDA 2, 5-dr MPV, 03-07	35 ¹ / ₂ "	901 mm



4

MAZDA Demio, 5-dr MPV, 02-07 (JPN)

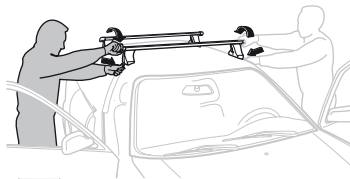
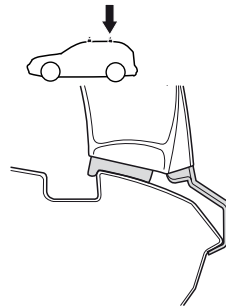
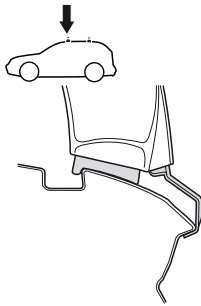
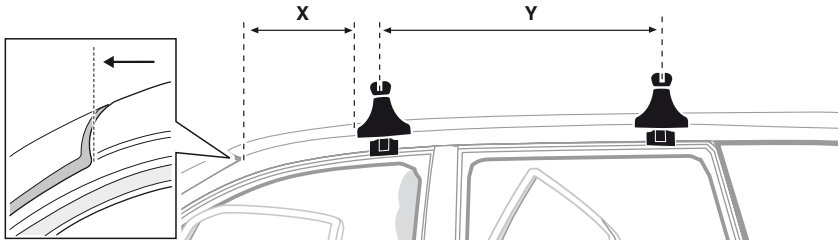
MAZDA 2, 5-dr MPV, 03-07



5



	X mm	Y mm	X inch	Y inch
MAZDA Demio, 5-dr MPV, 02-07 (JPN)	420 mm	710 mm	16 1/2"	28"
MAZDA 2, 5-dr MPV, 03-07	420 mm	710 mm	16 1/2"	28"



GB/US Tighten alternately

D Die Schrauben abwechselnd anziehen

F Serrer alternativement chaque côté

NL Afwisselend aan de linker- en de rechterkant aandraaien

I Alternare il serraggio delle viti

E Apretar alternativamente

PT Aperte alternadamente

S Dra åt växelvis

FIN Kierrä vuorotellen

EST Pinguldage vaheldumisi

LAT Pielvelciet pamišus

LIT Užsukinėkite pakaitomis

PL Śruby dokręcaj naprzemiennie

RU Затягивайте попеременно

CZ Pokręťta bagażníka dokręcaj dokręcaj naprzemiennie.

SK Doťahujte striedavo

SLO Privijajte izmenično.

HR Naizmjenično zategnite

HU Egymástól függetlenül szorítandó

GR Σφιγγετε εναλλάξ

TR Dönüşümlü sıkın

中文 交替拧紧

한국어 번갈아 가며 조이십시오.

日本語 交互に締め付けてください。

ไทย ชั้้นโน้บแบบสลับ

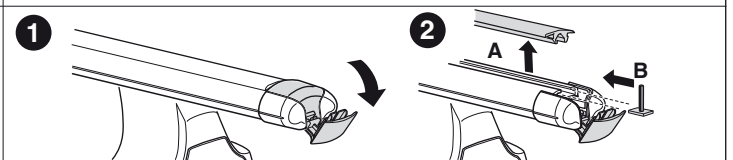
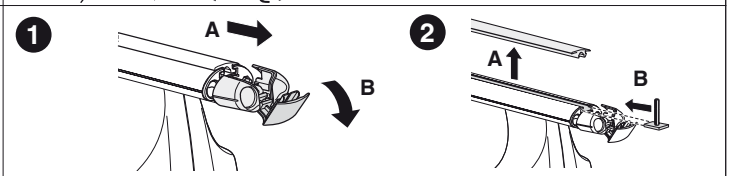
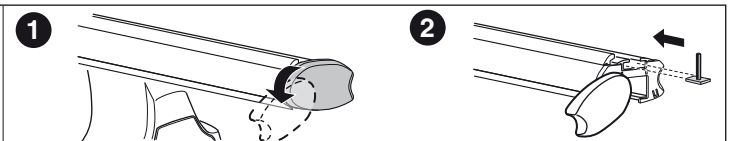
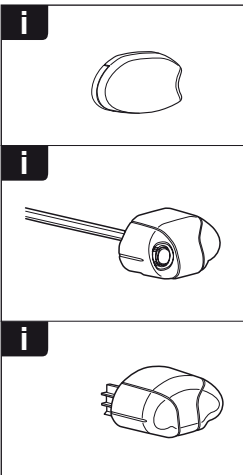
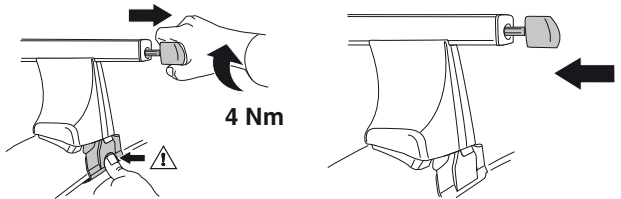
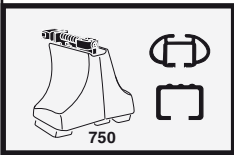
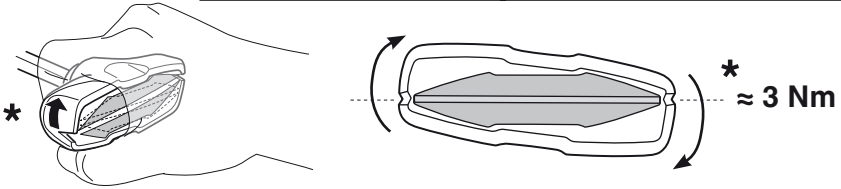
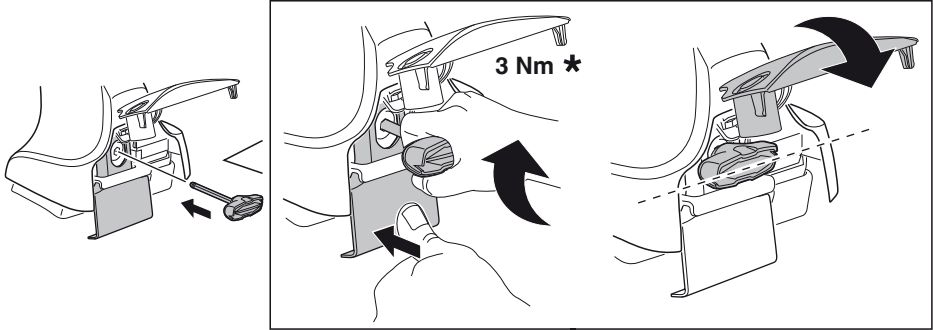
6



480R/754



480





THULE
SWEDEN
**ONE
KEY
SYSTEM**



- 544 (x4)
- 596 (x6)
- 588 (x8)
- NA 510 (x10)
- EUR 452 (x12)
- ASIA



WW ▶ Thule Sweden AB, Box 69, 330 33 Hillerstorp, SWEDEN
NA ▶ Thule Inc., 42 Silvermine Road, Seymour, Connecticut 06483, USA

info@thule.com
customer.service@thule.com

www.thule.com