

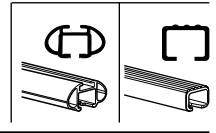
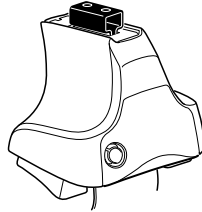
Kit 1366

MINI Cooper (Mk.I), 3-dr Hatchback, 01-06 / *03-07

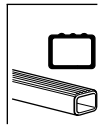
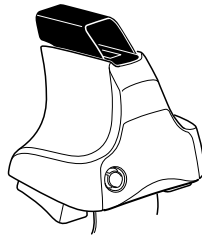
MINI Cooper (Mk.II), 3-dr Hatchback, 07- / *08-

*North America

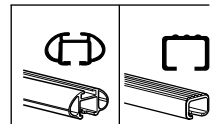
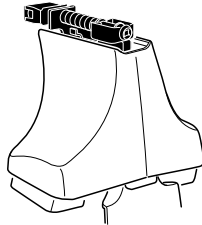
480R
754

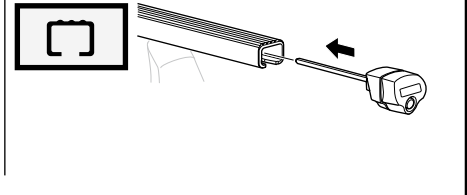
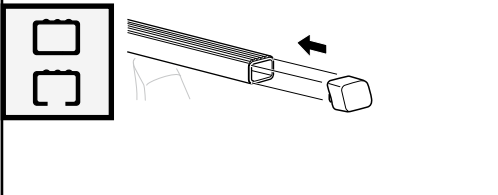
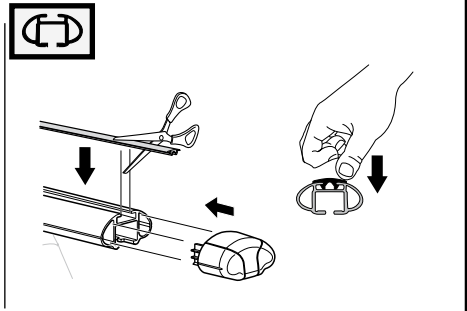
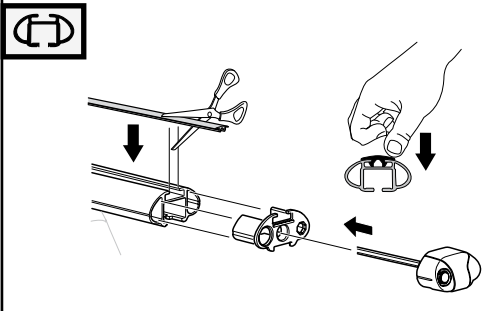
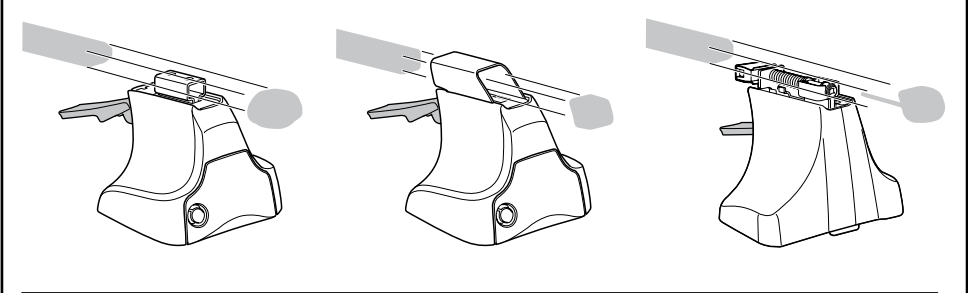
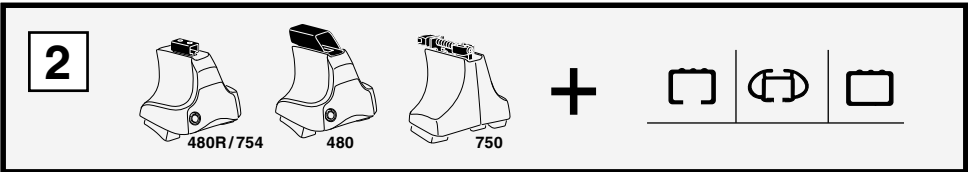
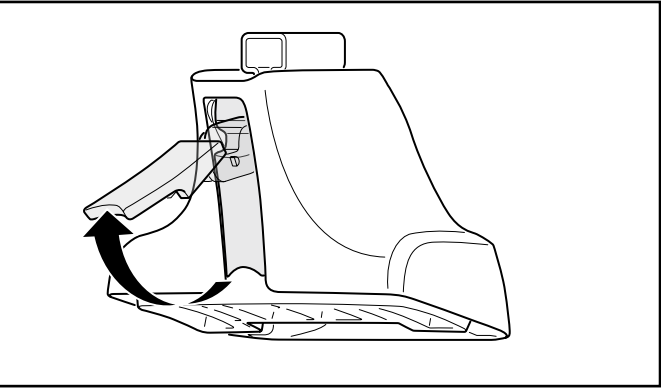
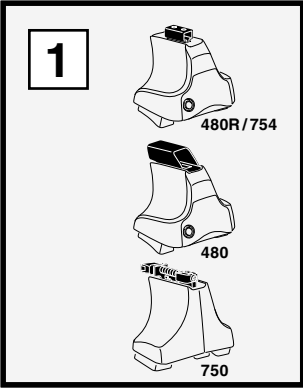


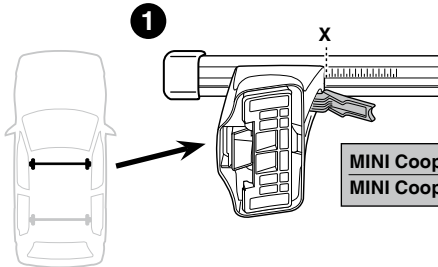
480



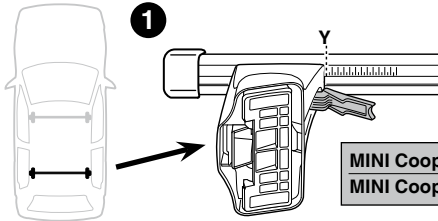
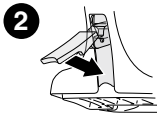
750



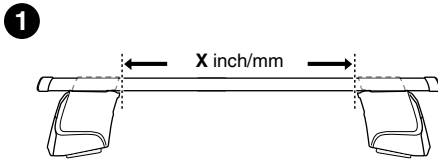
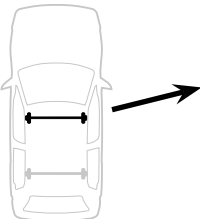
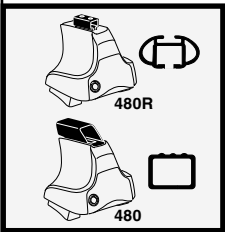
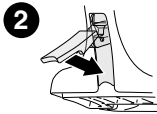




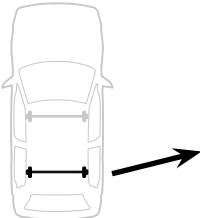
	X
MINI Cooper (Mk.I), 3-dr Hatchback, 01-06 / *03-07	31
MINI Cooper (Mk.II), 3-dr Hatchback, 07- / *08-	28



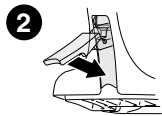
	Y
MINI Cooper (Mk.I), 3-dr Hatchback, 01-06 / *03-07	32
MINI Cooper (Mk.II), 3-dr Hatchback, 07- / *08-	32



	X inch	X mm
MINI Cooper (Mk.I), 3-dr Hatchback, 01-06 / *03-07	37 ⁷/₈ "	961 mm
MINI Cooper (Mk.II), 3-dr Hatchback, 07- / *08-	36 ⁵/₈ "	931 mm



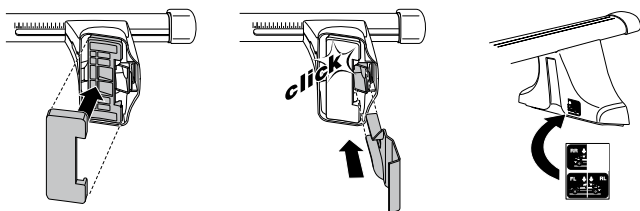
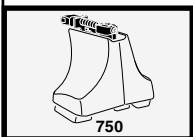
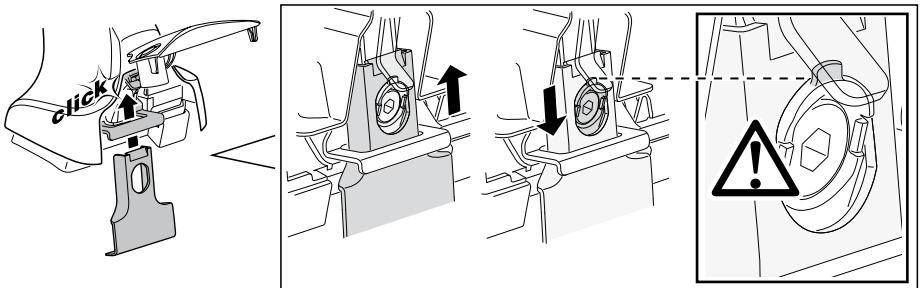
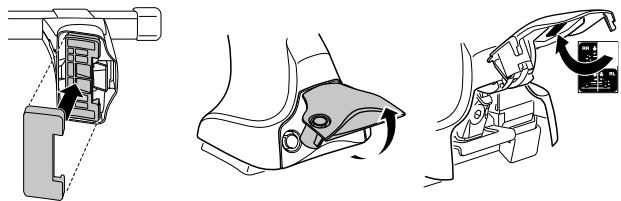
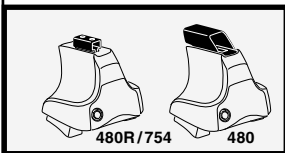
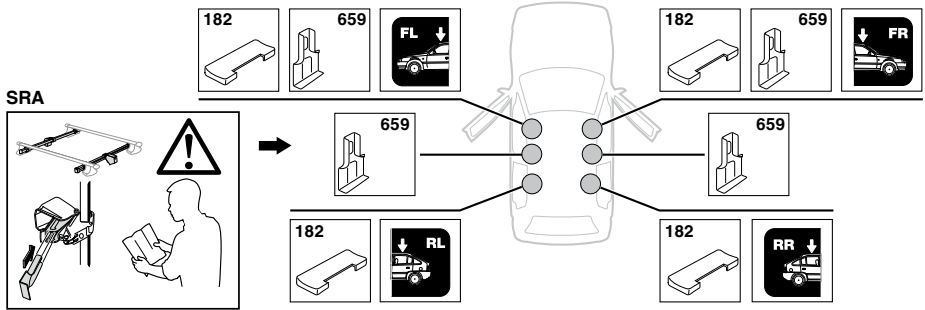
	Y inch	Y mm
MINI Cooper (Mk.I), 3-dr Hatchback, 01-06 / *03-07	38 ¹/₄ "	971 mm
MINI Cooper (Mk.II), 3-dr Hatchback, 07- / *08-	38 ¹/₄ "	971 mm



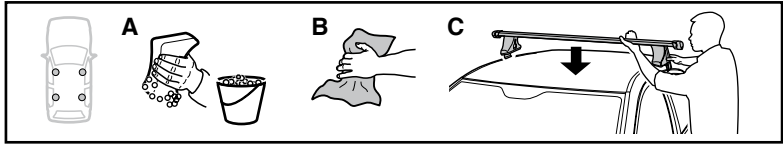
4

MINI Cooper (Mk.I), 3-dr Hatchback, 01-06 / *03-07

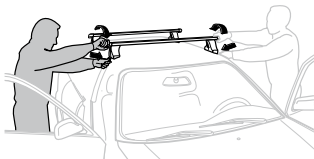
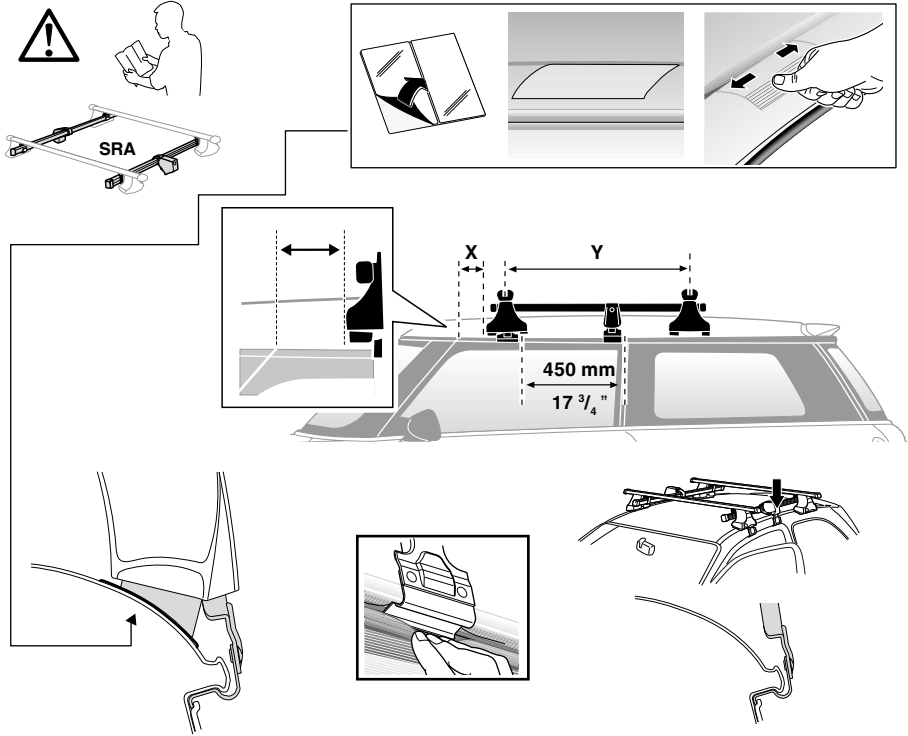
MINI Cooper (Mk.II), 3-dr Hatchback, 07- / *08-



5

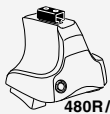


	X mm	Y mm	X inch	Y inch
MINI Cooper (Mk.I), 3-dr Hatchback, 01-06 / *03-07	110 mm	700 mm	4 3/8"	27 1/2"
MINI Cooper (Mk.II), 3-dr Hatchback, 07- / *08-	110 mm	700 mm	4 3/8"	27 1/2"



- | | | | |
|--------------|---|------------|--|
| GB/US | Tighten alternately | CZ | Pokřetla bagážíka dokřečaj napřemiennie. |
| D | Die Schrauben abwechselnd anziehen | SK | Dofahujte striedavo |
| F | Serrer alternativement chaque côté | SLO | Privijajte izmenično. |
| NL | Afwisselend aan de linker- en de rechterkant aandraaien | HR | Naizmjeno zategnite |
| I | Alternare il serraggio delle viti | HU | Egymástól függetlenül szorítandó |
| E | Apretar alternativamente | GR | Σφιγγετε εναλλάξ |
| PT | Aperte alternadamente | TR | Dönüşümlü sıkın |
| S | Dra åt växelvis | 中文 | 交替拧紧 |
| FIN | Kierrä vuorotellen | 한국어 | 변갈아 가며 조이십시오. |
| EST | Pinguldage vaheldumisi | 日本語 | 交互に締め付けてください。 |
| LAT | Pievelciet pamišus | ไทย | ขันในแบบสลับ |
| LIT | Užsukinėkite pakaitomis | | |
| PL | Śruby dokręcaj naprzemiennie | | |
| RU | Затягивайте попеременно | | |

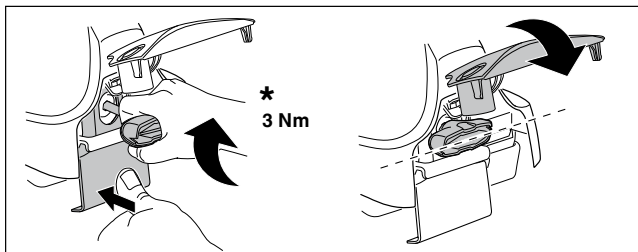
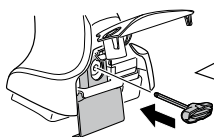
6



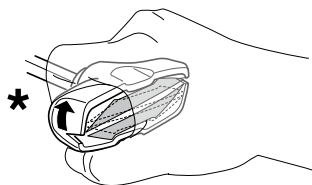
480R/754



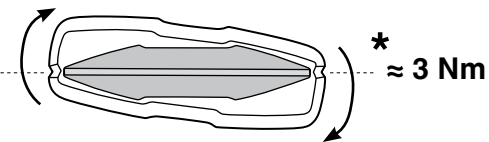
480



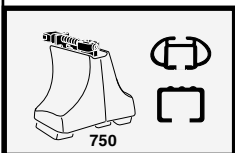
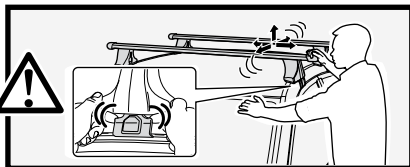
*
3 Nm



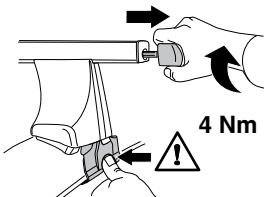
*



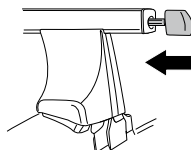
*
≈ 3 Nm



750



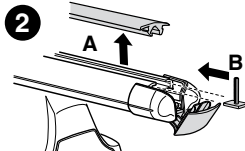
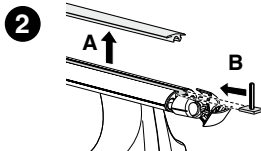
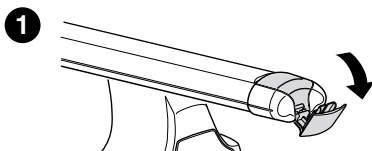
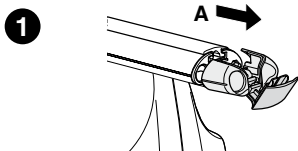
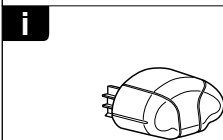
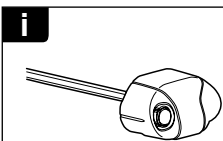
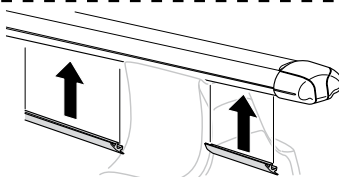
4 Nm

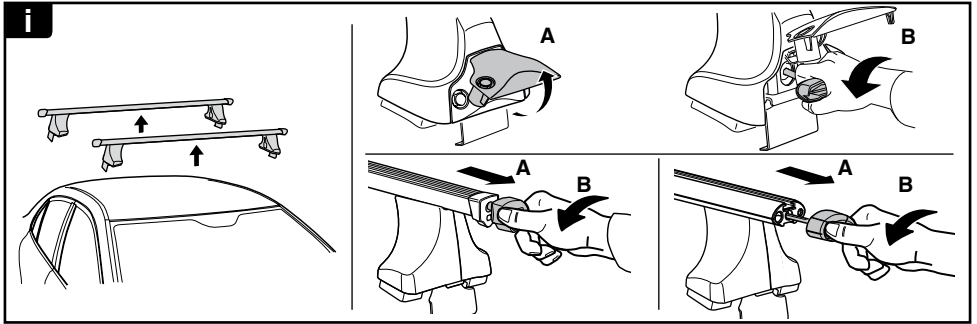


7

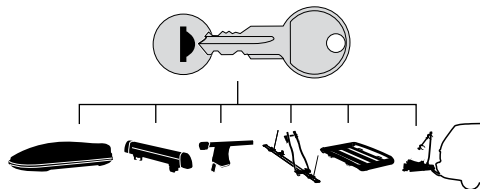


x1
17 mm

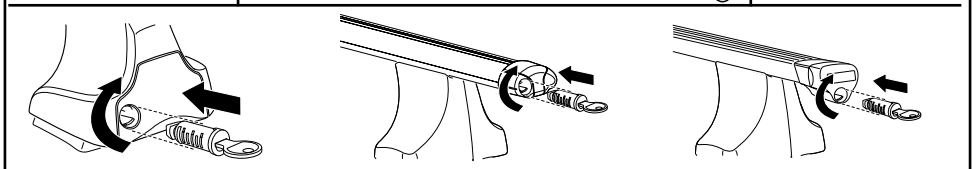




THULE
SWEDEN
**ONE
KEY
SYSTEM**



		(x4)
		(x6)
		(x8)
NA		(x10)
EUR		(x12)
ASIA		(x12)



WW ▶ Thule Sweden AB, Box 69, 330 33 Hillerstorp, SWEDEN
NA ▶ Thule Inc., 42 Silvermine Road, Seymour, Connecticut 06483, USA

info@thule.com
customer.service@thule.com

www.thule.com