

# Kit 1430

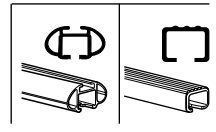
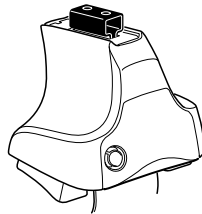
**NISSAN King Cab**, 4-dr Pickup Double Cab, 05-\*

**NISSAN Navara**, 4-dr Pickup Double Cab, 05-\*

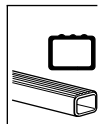
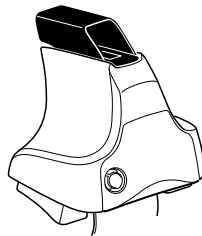
**NISSAN Pathfinder**, 5-dr SUV, 05-\*

\* Without roof railing

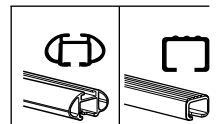
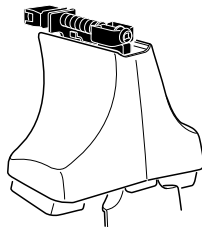
480R  
754



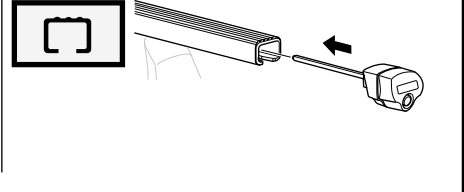
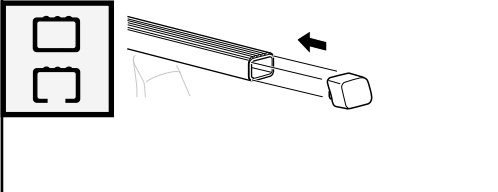
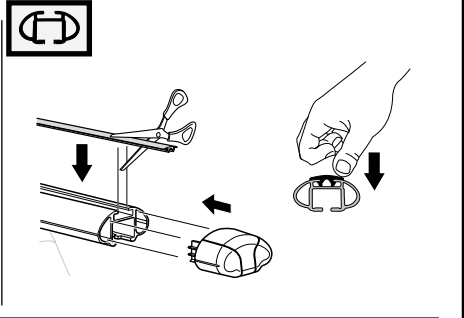
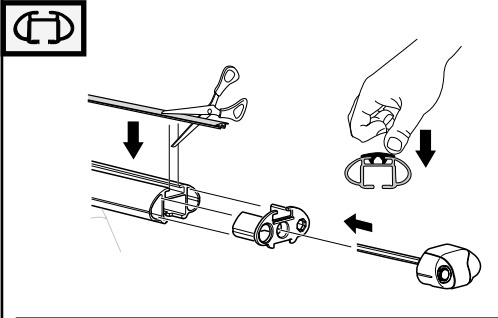
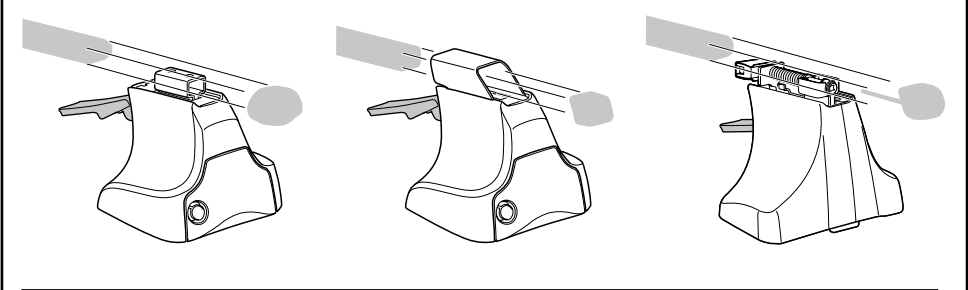
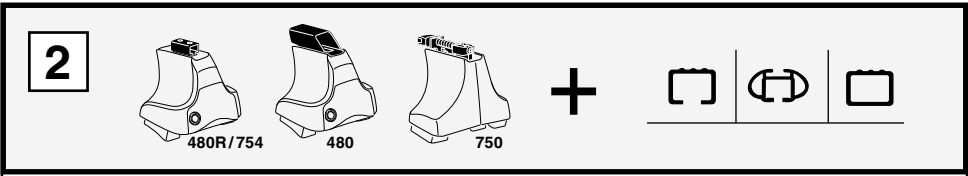
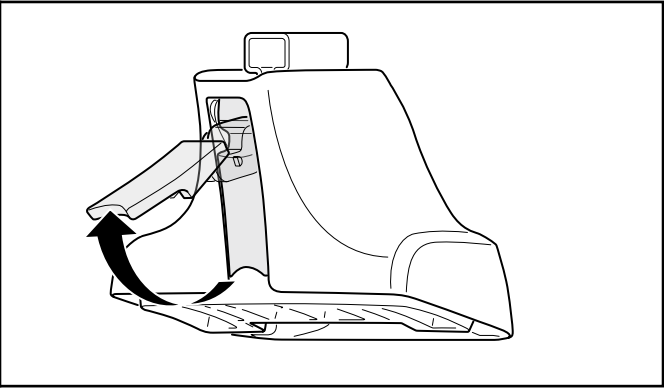
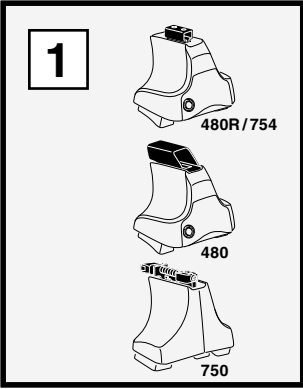
480



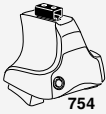
750



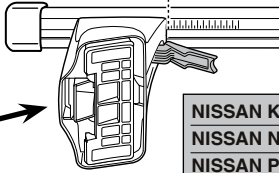
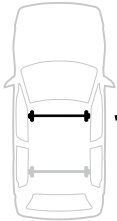
**Kit**



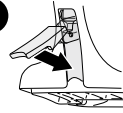
3



1

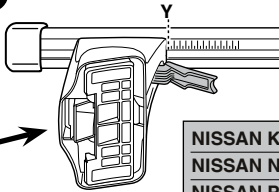
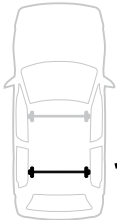


2

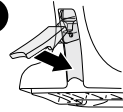


	X
<b>NISSAN King Cab</b> , 4-dr Pickup Double Cab, 05–	46,5
<b>NISSAN Navara</b> , 4-dr Pickup Double Cab, 05–	46,5
<b>NISSAN Pathfinder</b> , 5-dr SUV, 05–	46,5

1



2



	Y
<b>NISSAN King Cab</b> , 4-dr Pickup Double Cab, 05–	45
<b>NISSAN Navara</b> , 4-dr Pickup Double Cab, 05–	45
<b>NISSAN Pathfinder</b> , 5-dr SUV, 05–	45

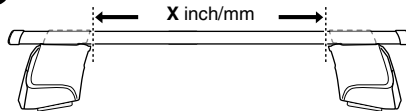
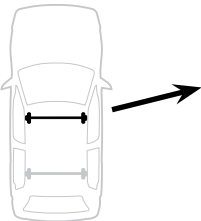


480R

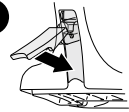


480

1

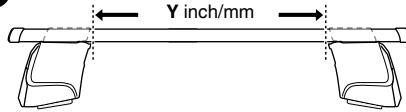
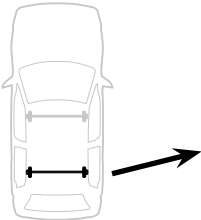


2

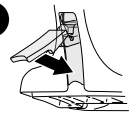


	X inch	X mm
<b>NISSAN King Cab</b> , 4-dr Pickup Double Cab, 05–	43 <sup>7</sup> / <sub>8</sub> "	1116 mm
<b>NISSAN Navara</b> , 4-dr Pickup Double Cab, 05–	43 <sup>7</sup> / <sub>8</sub> "	1116 mm
<b>NISSAN Pathfinder</b> , 5-dr SUV, 05–	43 <sup>7</sup> / <sub>8</sub> "	1116 mm

1



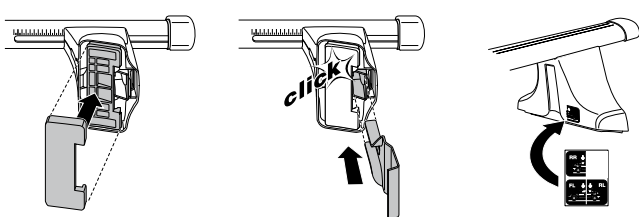
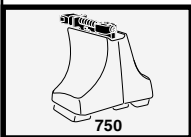
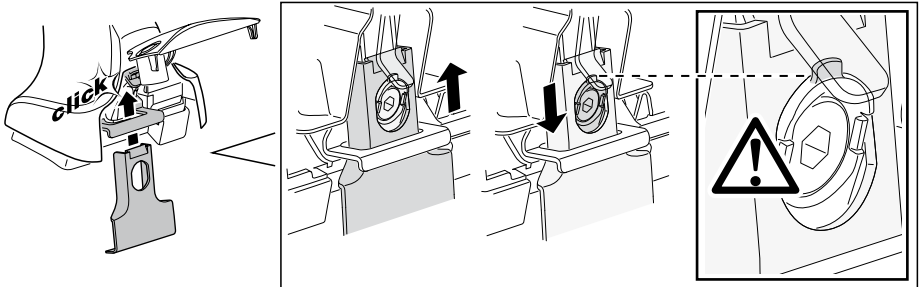
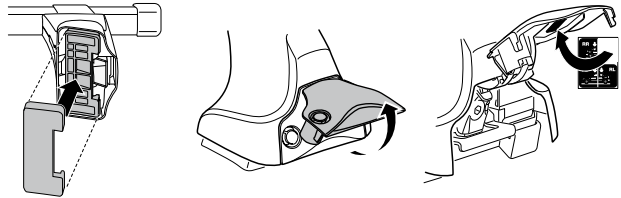
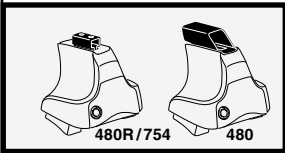
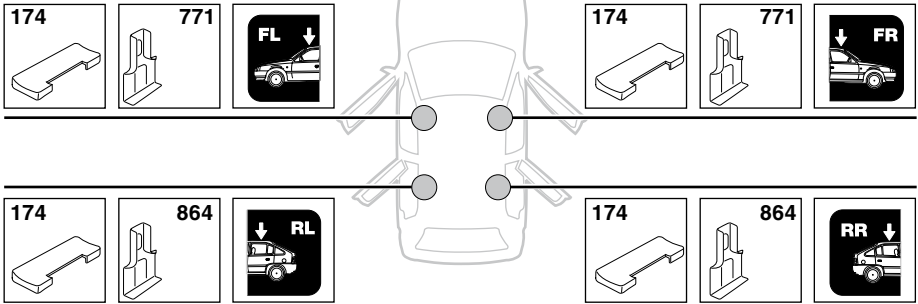
2



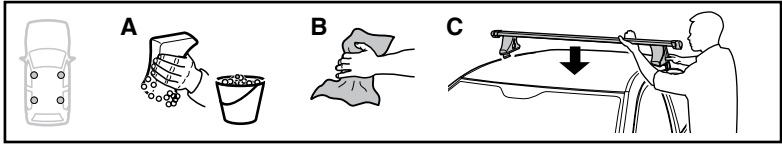
	Y inch	Y mm
<b>NISSAN King Cab</b> , 4-dr Pickup Double Cab, 05–	43 <sup>3</sup> / <sub>8</sub> "	1101 mm
<b>NISSAN Navara</b> , 4-dr Pickup Double Cab, 05–	43 <sup>3</sup> / <sub>8</sub> "	1101 mm
<b>NISSAN Pathfinder</b> , 5-dr SUV, 05–	43 <sup>3</sup> / <sub>8</sub> "	1101 mm

# 4

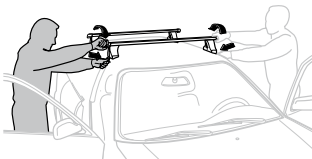
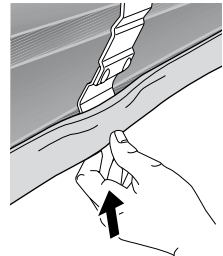
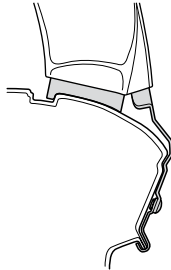
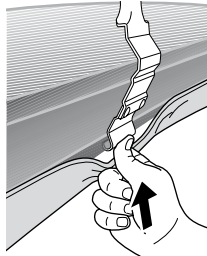
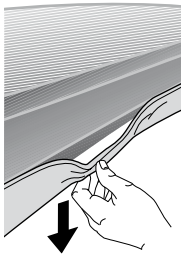
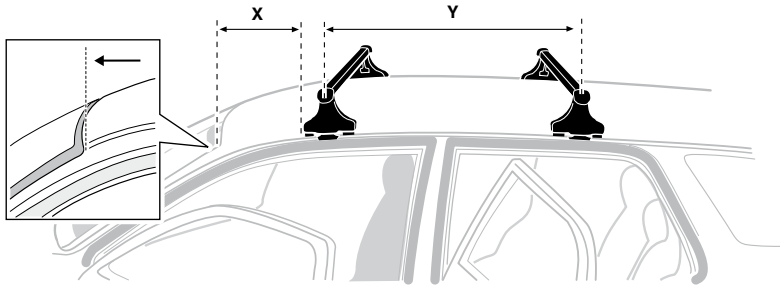
NISSAN King Cab, 4-dr Pickup Double Cab, 05–  
 NISSAN Navara, 4-dr Pickup Double Cab, 05–  
 NISSAN Pathfinder, 5-dr SUV, 05–



5

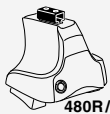


	X mm	Y mm	X inch	Y inch
NISSAN King Cab, 4-dr Pickup Double Cab, 05-	260 mm	750 mm	10 1/4"	29 1/2"
NISSAN Navara, 4-dr Pickup Double Cab, 05-	260 mm	750 mm	10 1/4"	29 1/2"
NISSAN Pathfinder, 5-dr SUV, 05-	260 mm	750 mm	10 1/4"	29 1/2"



- |              |   |            |   |
|--------------|---|------------|---|
| <b>GB/US</b> | Tighten alternately                                     | <b>CZ</b>  | Pokřeřta багажника dokřeřcaj dokřeřcaj napřzemiennie. |
| <b>D</b>     | Die Schrauben abwechselnd anziehen                      | <b>SK</b>  | Dofahujte striedavo                                   |
| <b>F</b>     | Serrer alternativement chaque cōtē                      | <b>SLO</b> | Privijajte izmenično.                                 |
| <b>NL</b>    | Afwisselend aan de linker- en de rechterkant aandraaien | <b>HR</b>  | Naizmjenično zategniti                                |
| <b>I</b>     | Alternare il serraggio delle viti                       | <b>HU</b>  | Egymástól függetlenül szorítandó                      |
| <b>E</b>     | Apretar alternativamente                                | <b>GR</b>  | Σφιγγετε εναλάξ                                       |
| <b>PT</b>    | Aperter alternadamente                                  | <b>TR</b>  | Dönüşümlü sıkın                                       |
| <b>S</b>     | Dra åt växelvis   | <b>中文</b>  | 交替拧紧  |
| <b>FIN</b>   | Kierrä vuorotellen                                      | <b>한국어</b> | 변갈아 가며 조이십시오.   |
| <b>EST</b>   | Pinguldage vaheldumisi                                  | <b>日本語</b> | 交互に締め付けてください。   |
| <b>LAT</b>   | Pievēlciet pamišus                                      | <b>ไทย</b> | ขันน้ในแบบสลับ  |
| <b>LIT</b>   | Užsukinėkite pakaitomis                                 |            |   |
| <b>PL</b>    | Śruby dokřeřcaj napřzemiennie                           |            |   |
| <b>RU</b>    | Затягивайте попеременно                                 |            |   |

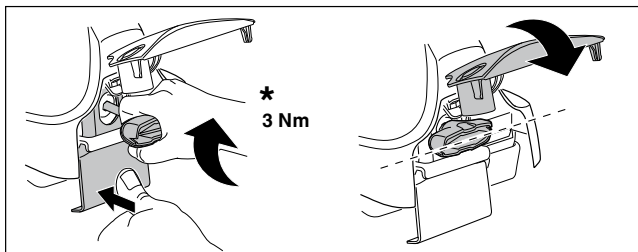
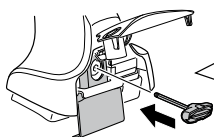
6



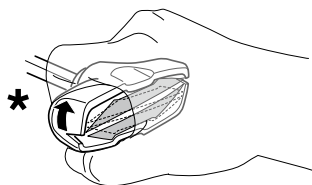
480R/754



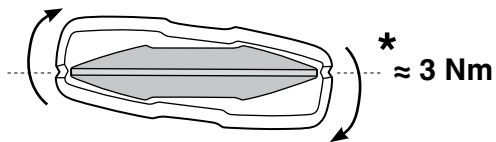
480



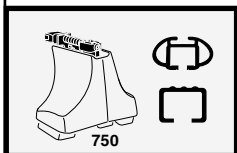
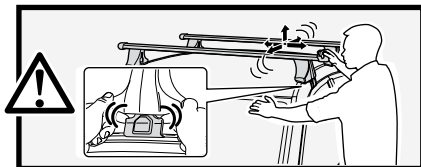
\*  
3 Nm



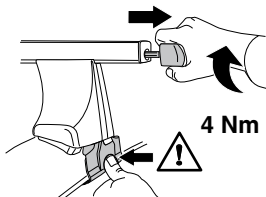
\*



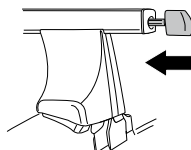
\*  
≈ 3 Nm



750



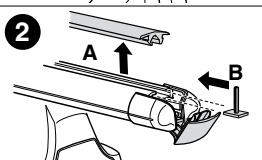
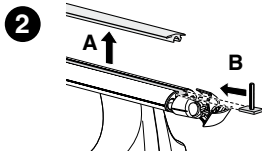
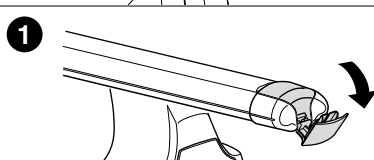
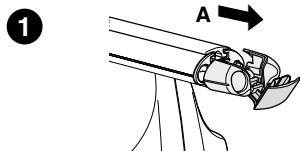
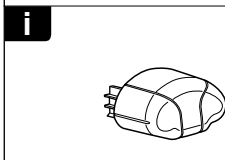
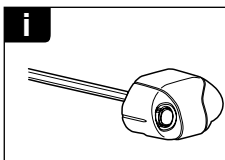
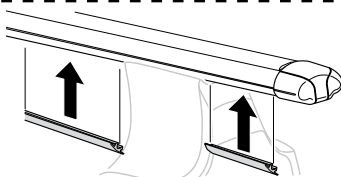
4 Nm

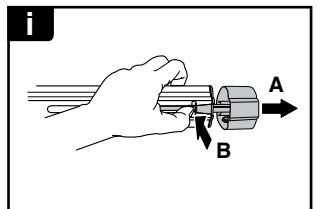
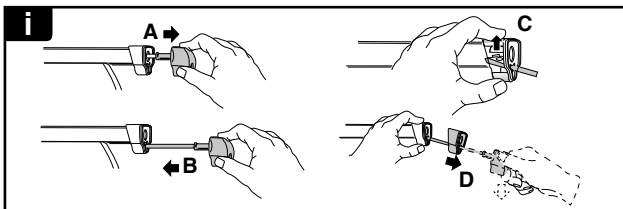
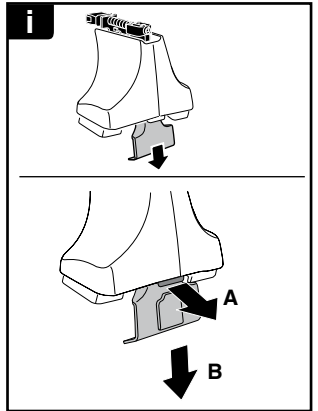
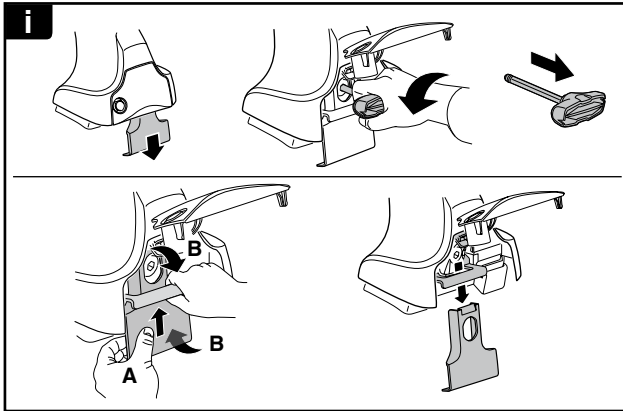
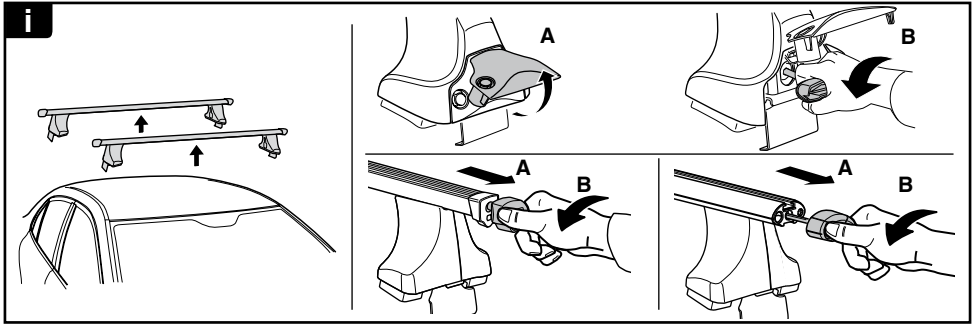


7

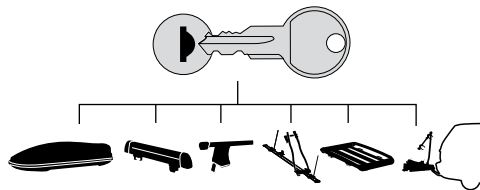


x1  
17 mm

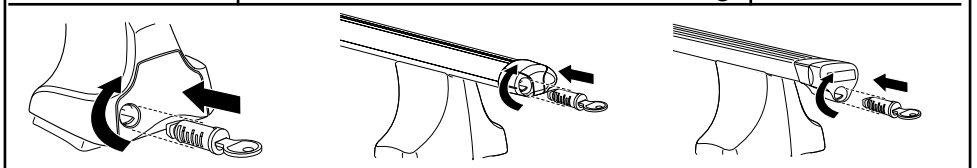




**THULE**  
SWEDEN  
**ONE  
KEY  
SYSTEM**



- 544 (x4)
- 596 (x6)
- 588 (x8)
- NA 510 (x10)
- EUR 452 (x12)
- ASIA



WW ▶ Thule Sweden AB, Box 69, 330 33 Hillerstorp, SWEDEN  
NA ▶ Thule Inc., 42 Silvermine Road, Seymour, Connecticut 06483, USA

info@thule.com  
customer.service@thule.com

www.thule.com





www.thuleprofessional.com

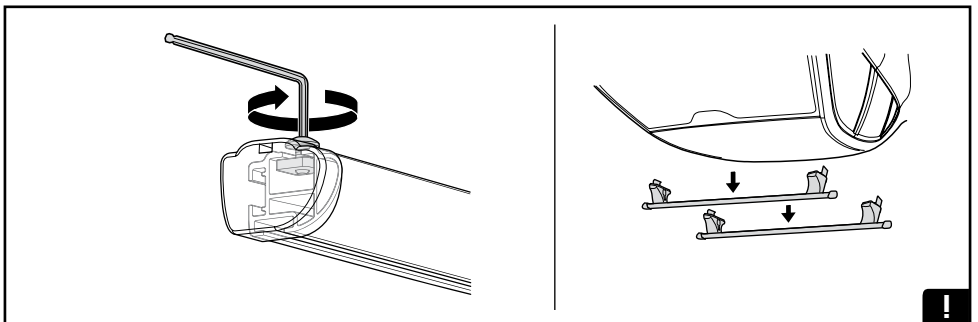
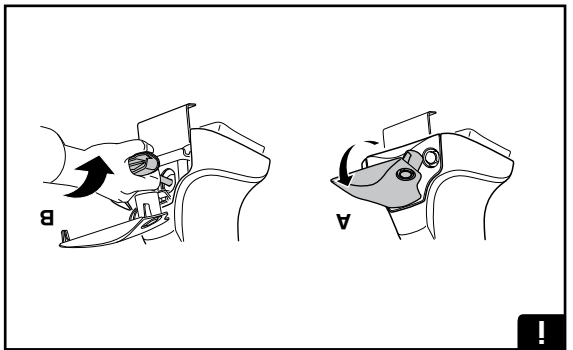
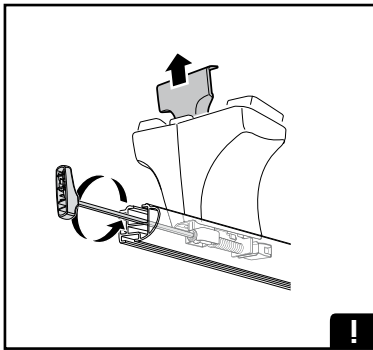
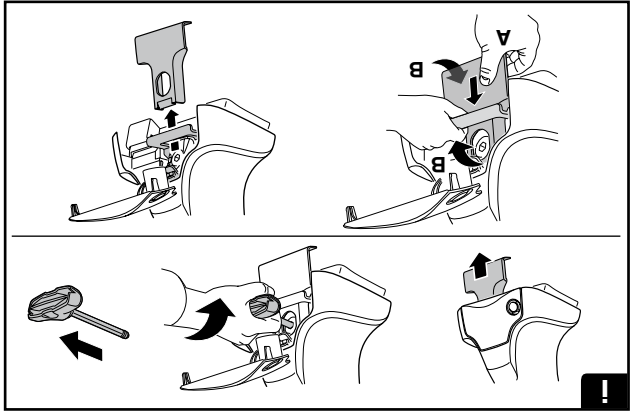
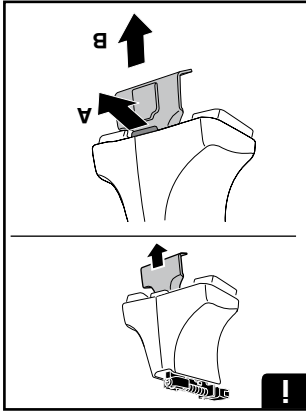


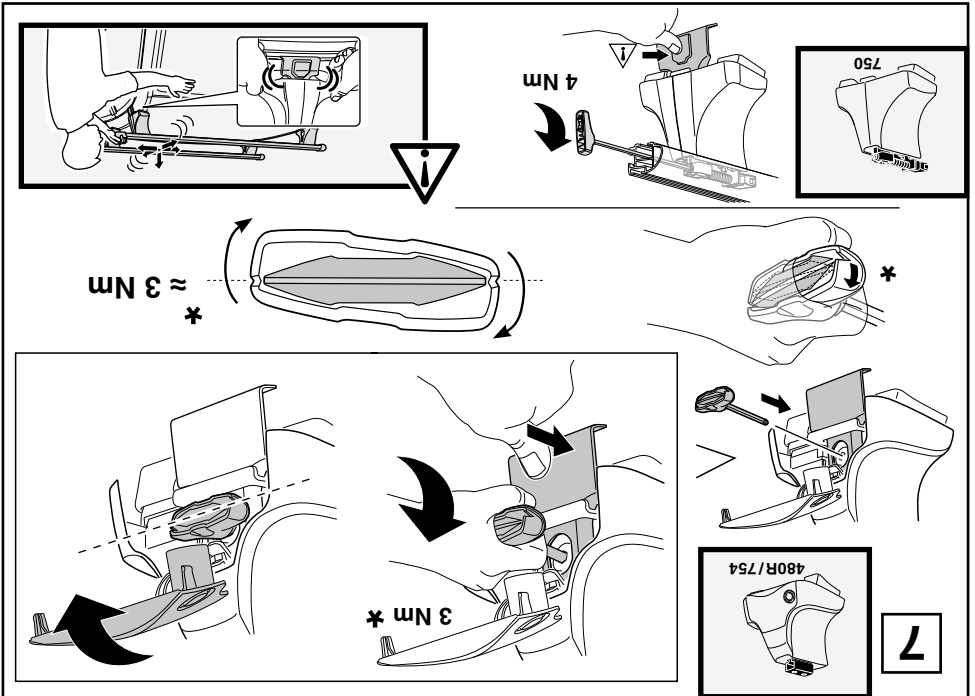
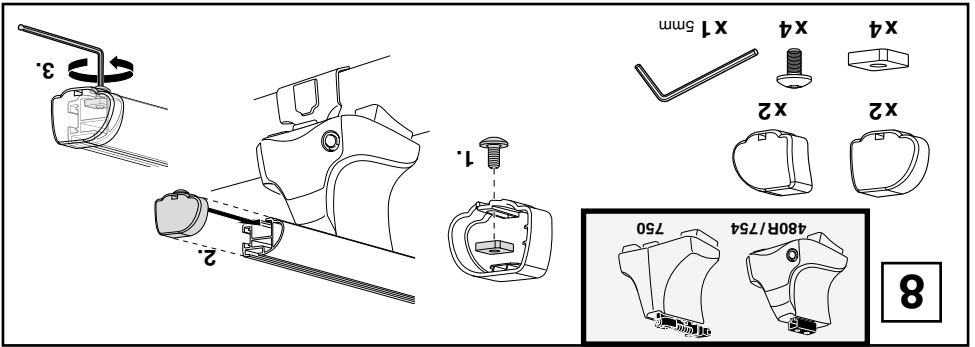
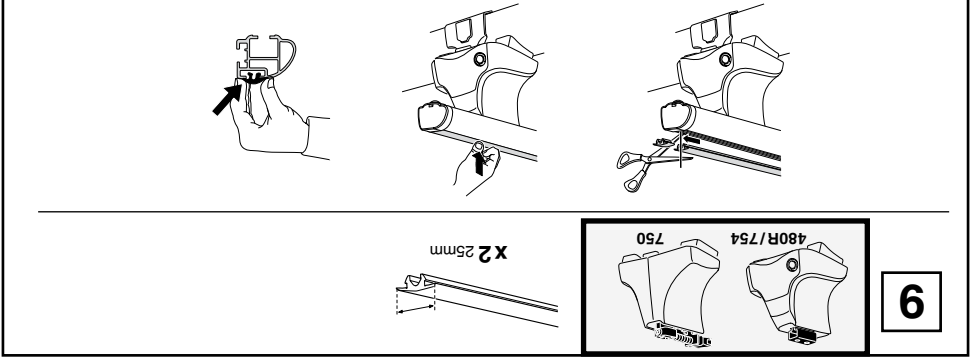
customer.service@thule.com

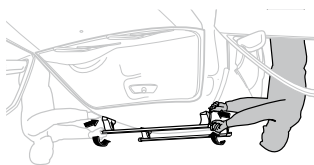


Thule Inc., 42 Silvermine Road, Seymour, Connecticut 06483, USA

Thule Sweden AB, Box 69, 330 33 Hillerstorp, SWEDEN

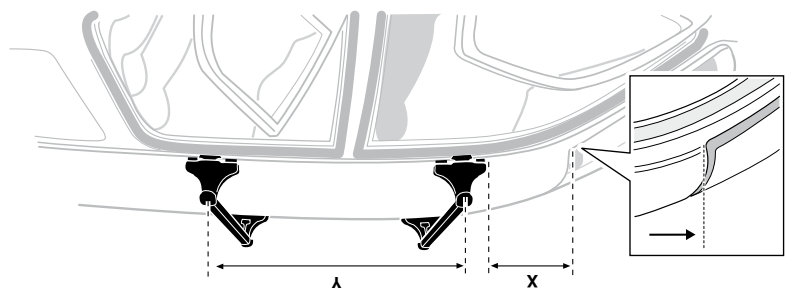
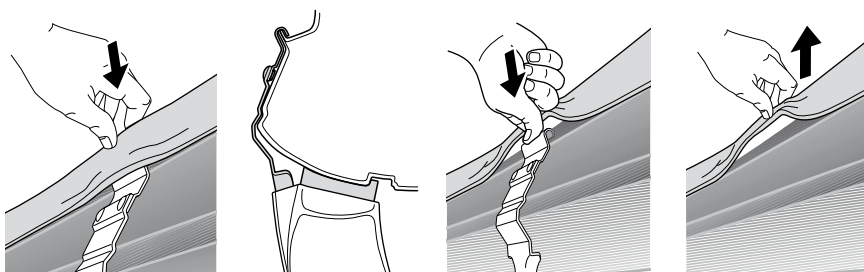




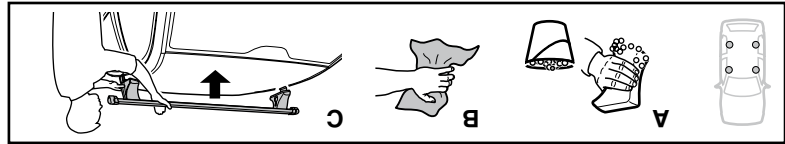


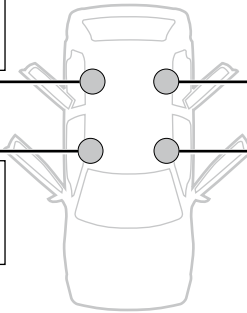
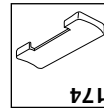
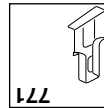
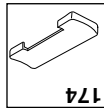
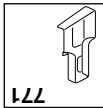
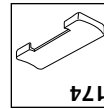
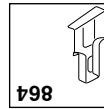
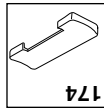
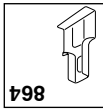
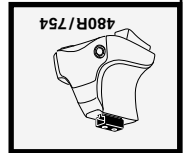
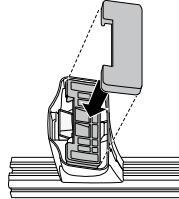
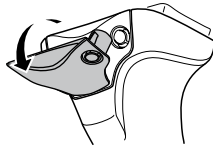
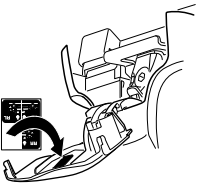
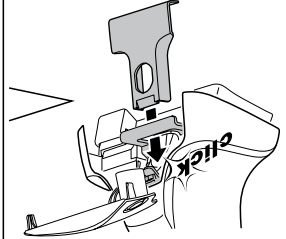
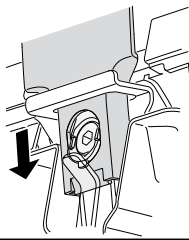
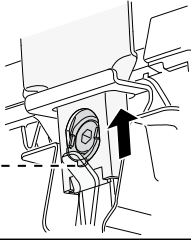
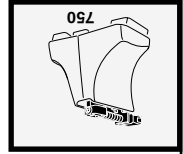
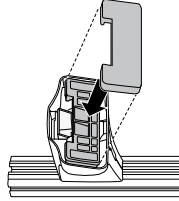
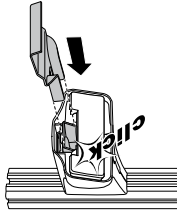
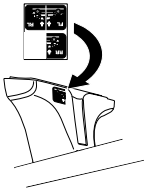
GB/US Tighten alternately  
D Die Schrauben abwechselnd  
F Serrer alternativement chaque côté  
NL Afwisselend aan de linker- en de  
I Alterare il serraggio delle viti  
E Apretar alternativamente  
PT Apretar alternadamente  
S Dra åt växelvis  
FIN Kierrä vuorotellen  
EST Pinguldage vaheldumisi  
LAT Pielietiet pamāsus  
LIT Užsukinkite pakaitomis  
PL Słubij dokręcaj naprzemiennie  
RU Затягивайте попеременно

CZ Pokrýtá bagazníka dokręcaj  
SK Dokrúťte štriedavo  
SLO Priljublje izmenično.  
HR Najzajmnično zategnite  
HU rechtekarkan aandraelen  
GR Δφύγιετε εναλλάξ  
TR Dönüşümlü sıkın  
中文 交替拧紧  
한국어 번갈아 가며 조이십시오.  
日本語 交互に締め付けてください。  
ไทย หมุนสลับกัน

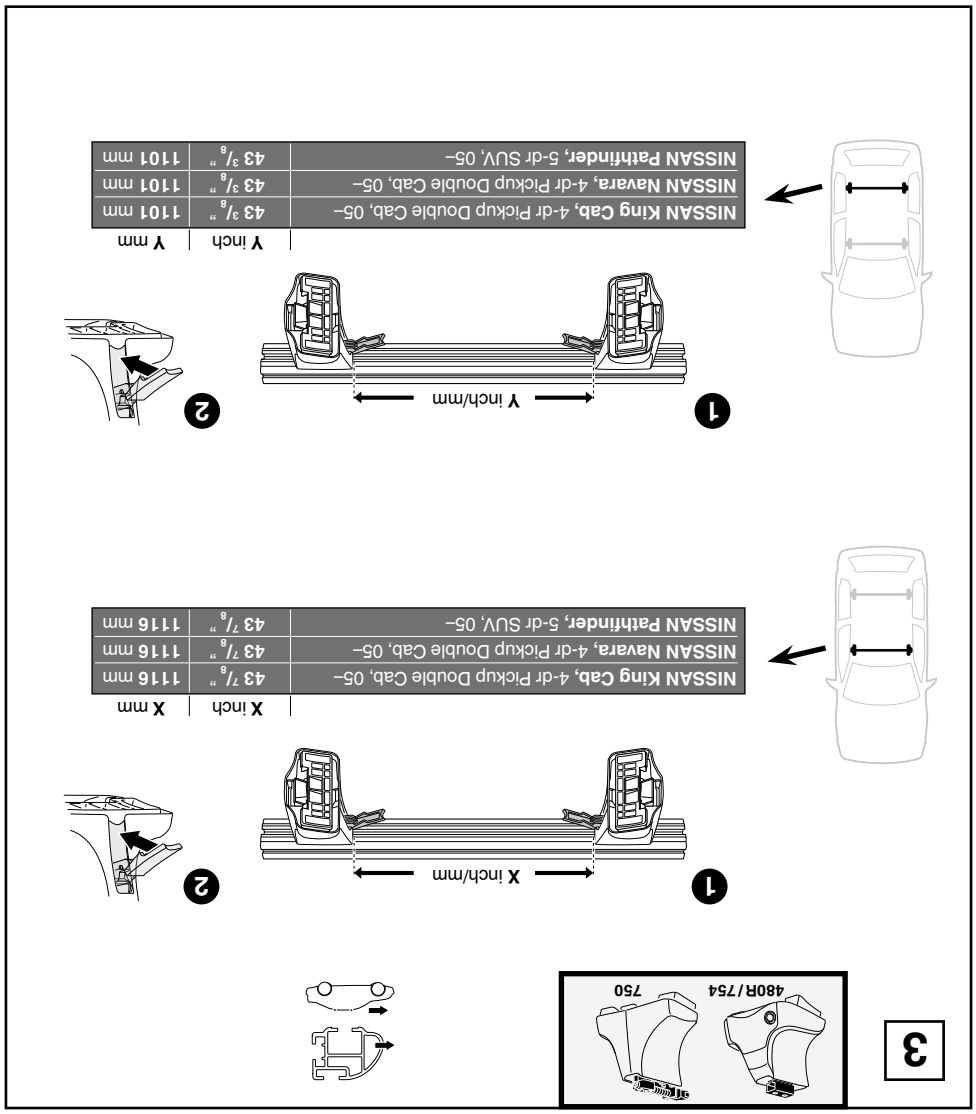
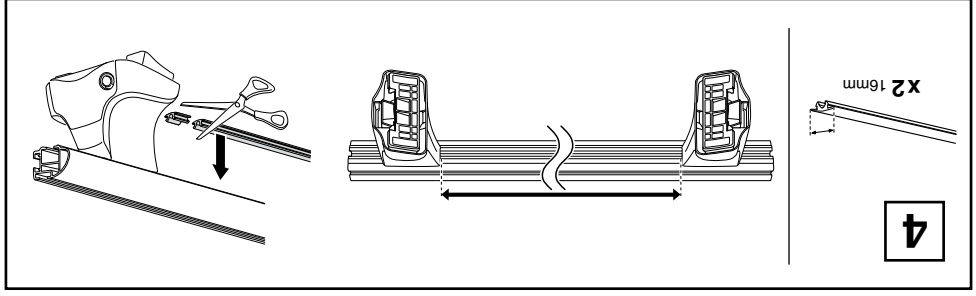


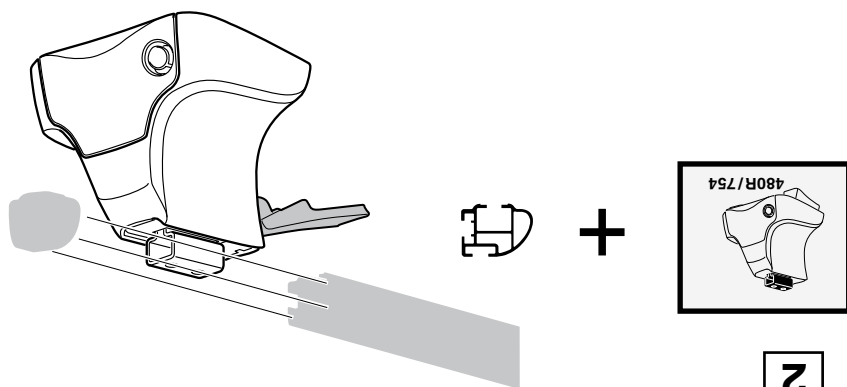
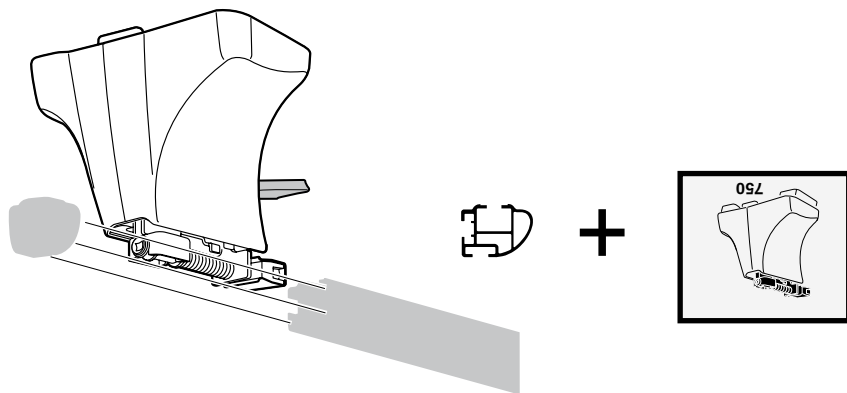
NISSAN Pathfinder, 5-dr SUV, 05-	260 mm	750 mm	10 1/4 in	29 1/2 in
NISSAN Navara, 4-dr Pickup Double Cab, 05-	260 mm	750 mm	10 1/4 in	29 1/2 in
NISSAN King Cab, 4-dr Pickup Double Cab, 05-	260 mm	750 mm	10 1/4 in	29 1/2 in



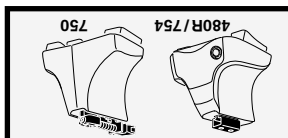
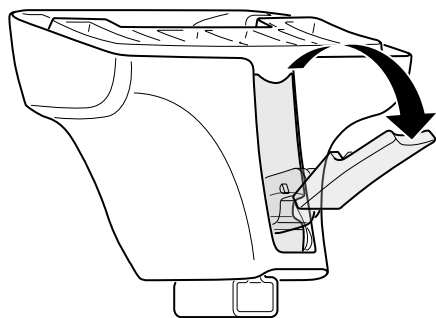


NISSAN King Cab, 4-dr Pickup Double Cab, 05-  
NISSAN Navara, 4-dr Pickup Double Cab, 05-  
NISSAN Pathfinder, 5-dr SUV, 05-

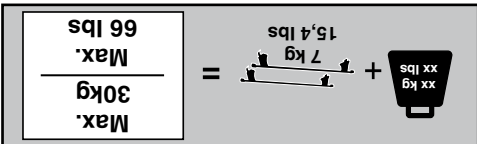
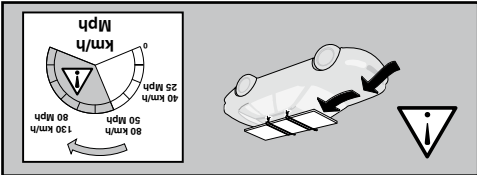
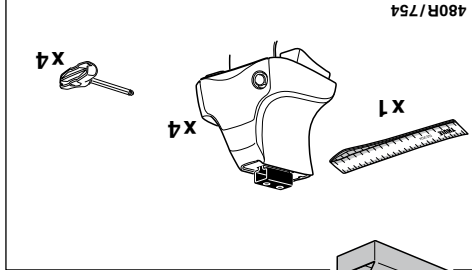
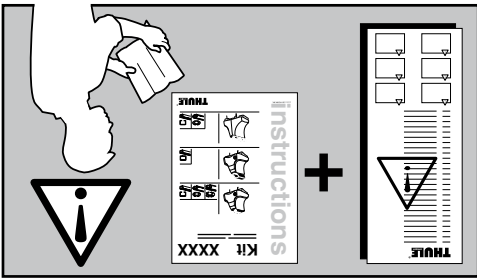
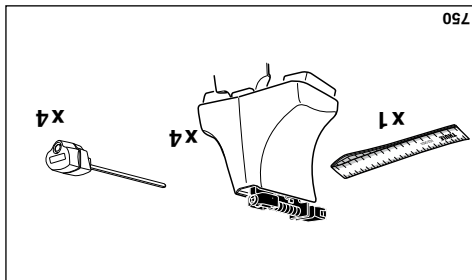
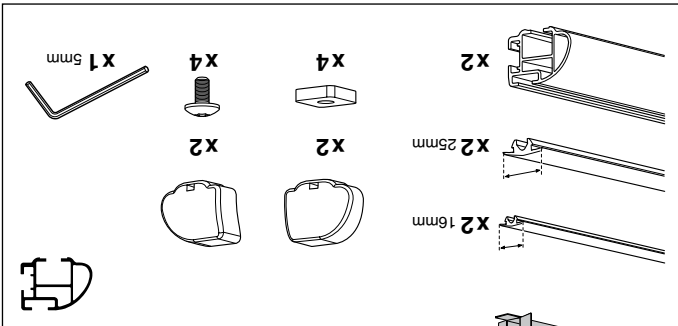
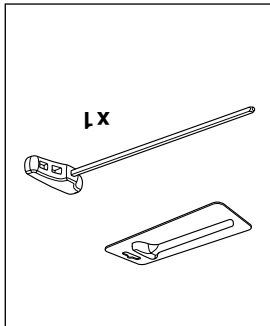
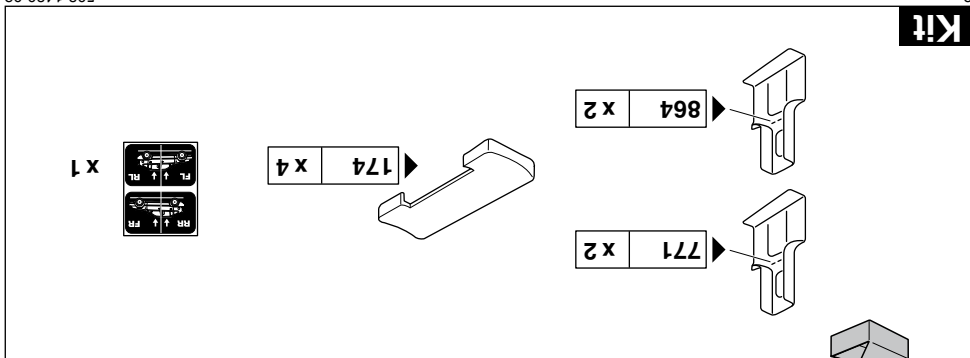




2



1



# instructions

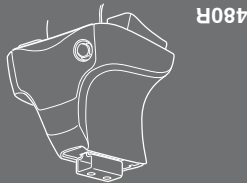
# Kit 1430

NISSAN King Cab, 4-dr Pickup Double Cab, 05-\*

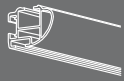
NISSAN Navara, 4-dr Pickup Double Cab, 05-\*

NISSAN Pathfinder, 5-dr SUV, 05-\*

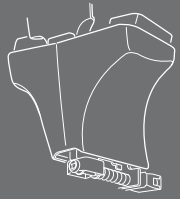
\* Without roof railing



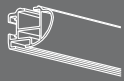
480R



754



750



ISO 11154-E

**THULE**  
SWEDEN  
PROFESSIONAL