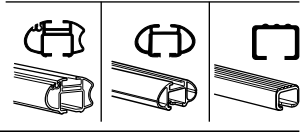
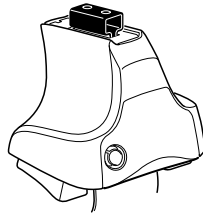


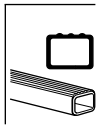
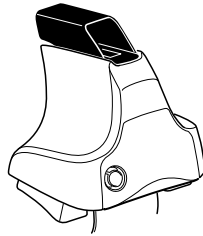
Kit 1496

FORD Ka, 3-dr Hatchback, 08-

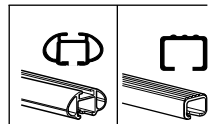
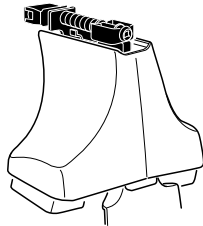
480R
754



480



750



xx kg / xx lbs + 7 kg / 15,4 lbs = **Max. 50 kg**
Max. 110 lbs
 3 kg / 6,6 lbs

80 km/h 50 Mph
 130 km/h 80 Mph
 40 km/h 25 Mph
km/h Mph

THULE + **Kit XXXX**

x1 x4 x4 x4 x4
480R/754

x1 x4 x4 x4 x4
480

x1 x4 x4
750

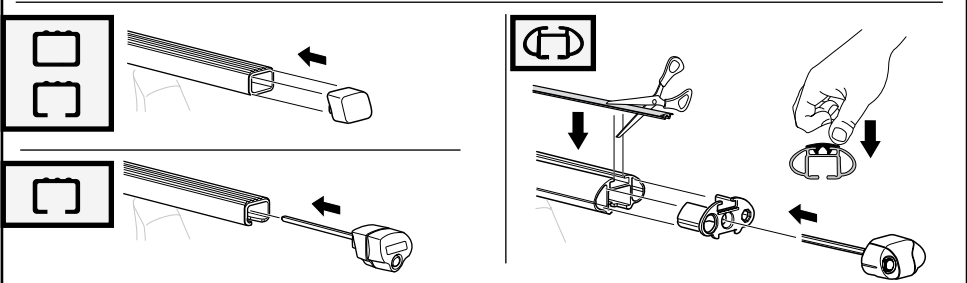
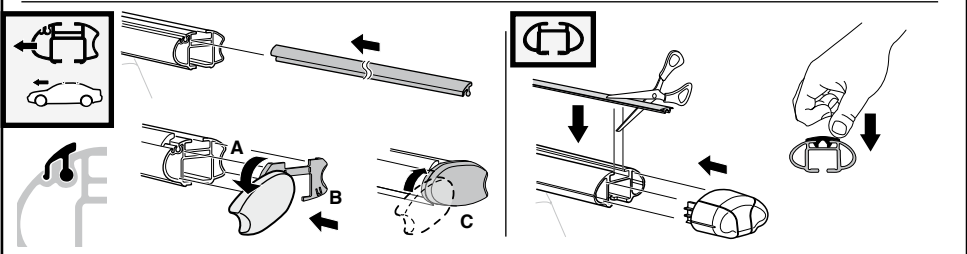
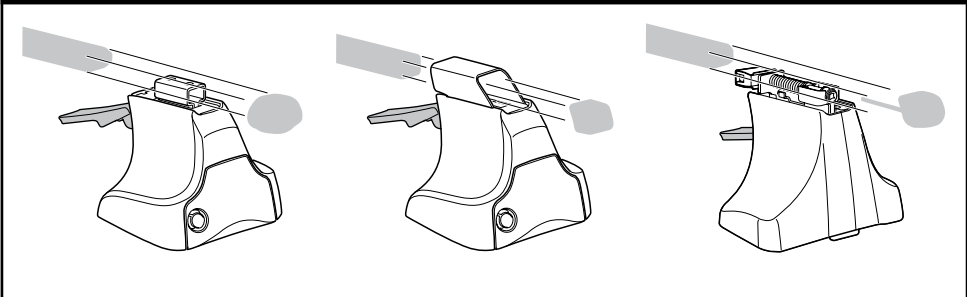
x2	x2	x2	x2	x2
x2		x2	x2	
x2		x4	x2	
x4		x4		

935 x2
936 x2

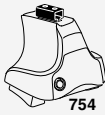
127 x2
279 x1
280 x1

x1

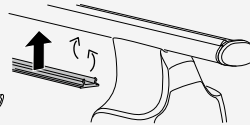
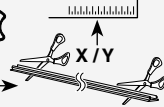
Kit



3



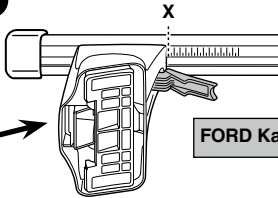
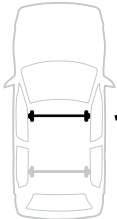
754



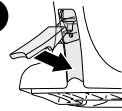
750



1



2

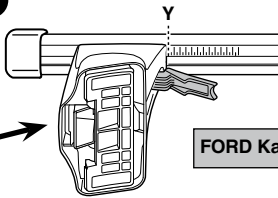
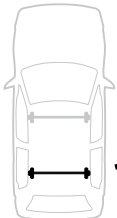


FORD Ka, 3-dr Hatchback, 08-

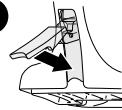
X

31,5

1



2



FORD Ka, 3-dr Hatchback, 08-

Y

27

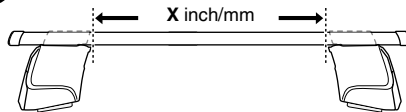


480R

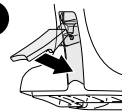


480

1



2



FORD Ka, 3-dr Hatchback, 08-

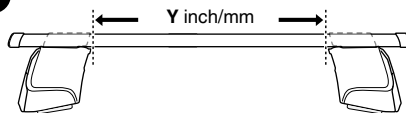
X inch

X mm

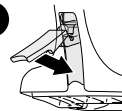
38"

966 mm

1



2



FORD Ka, 3-dr Hatchback, 08-

Y inch

Y mm

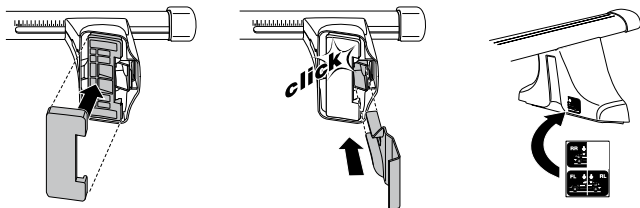
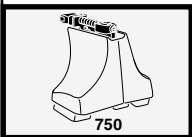
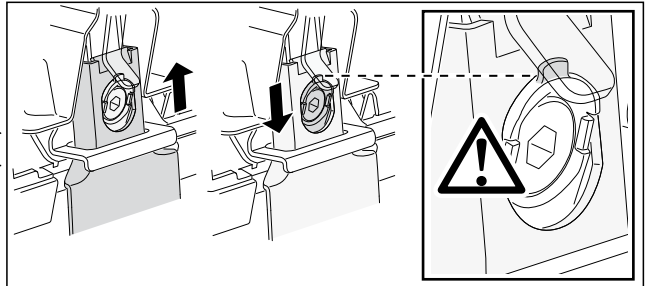
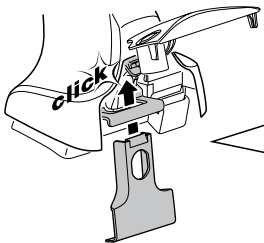
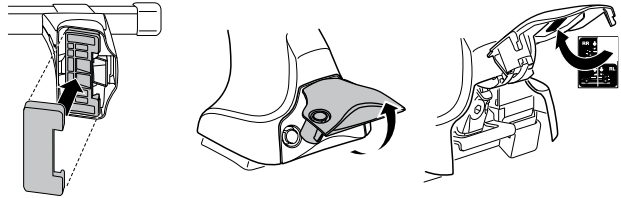
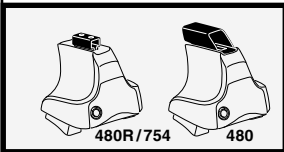
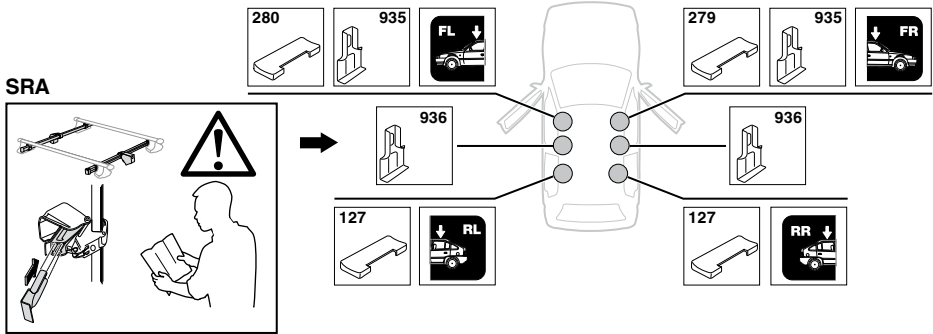
36 1/4"

921 mm

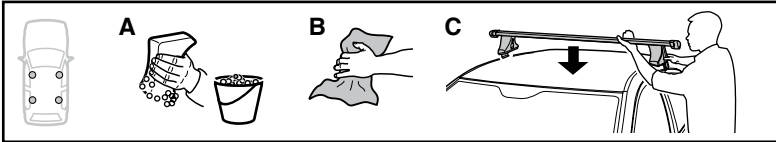
4

FORD Ka, 3-dr Hatchback, 08-

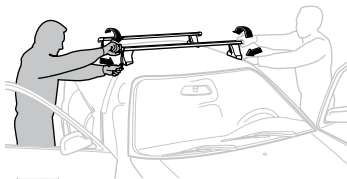
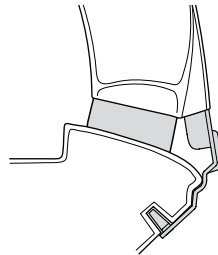
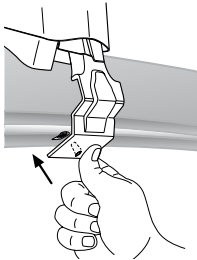
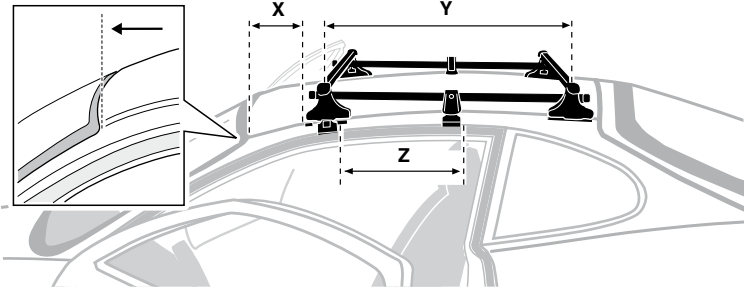
SRA



5



	X mm	Y mm	Z mm	X inch	Y inch	Z inch
FORD Ka, 3-dr Hatchback, 08-	205 mm	600 mm	325 mm	8 1/8"	23 3/8"	12 3/4"



GB/US Tighten alternately

D Die Schrauben abwechselnd anziehen

F Serrer alternativement chaque côté

NL Afwisselend aan de linker- en de rechterkant aandraaien

I Alternare il serraggio delle viti

E Apretar alternativamente

PT Aperte alternadamente

S Dra åt växelvis

FIN Kierrä vuorotellen

EST Pinguldage vaheldumisi

LAT Pielvelciet pamišus

LIT Užsukinėkite pakaitomis

PL Śruby dokręcaj naprzemiennie

RU Затягивайте попеременно

CZ Pokręťta багаžnika dokręcaj dokręcaj naprzemiennie.

SK Doťahujte striedavo

SLO Privijajte izmenično.

HR Naizmjenično zategnite

HU Egymástól függetlenül szorítandó

GR Σφίγγετε εναλλάξ

TR Dönüşümlü sıkın

中文 交替拧紧

한국어 번갈아 가며 조이십시오.

日本語 交互に締め付けてください。

ไทย ชั้ในแบบสลับ

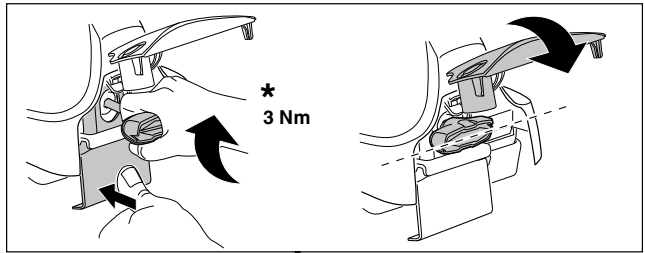
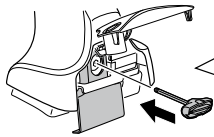
6



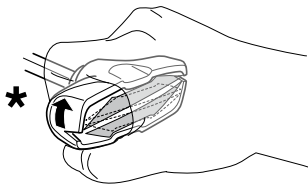
480R/754



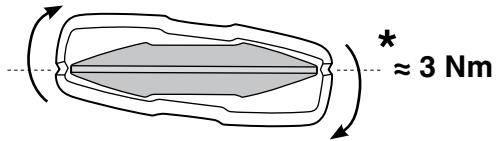
480



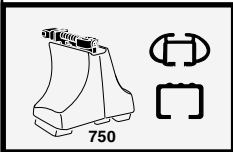
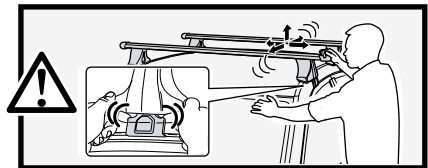
*
3 Nm



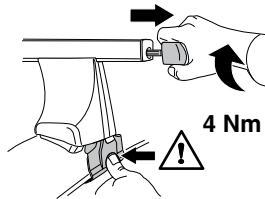
*



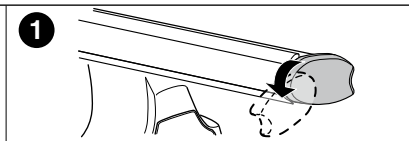
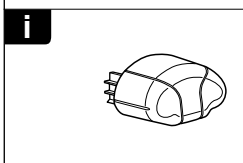
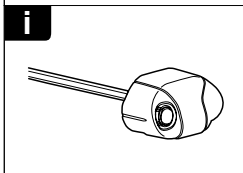
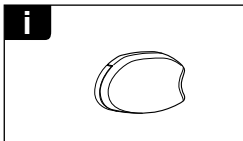
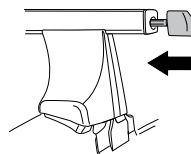
*
≈ 3 Nm



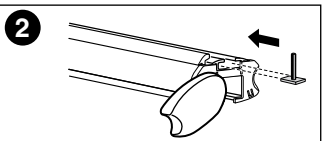
750



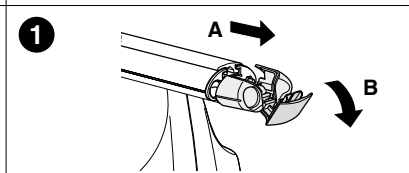
4 Nm



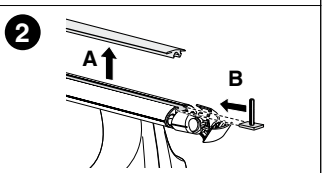
1



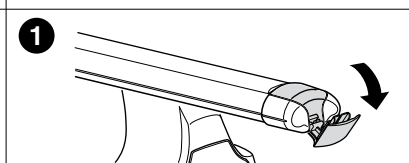
2



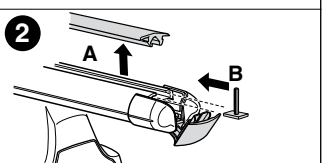
1



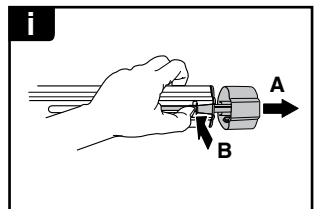
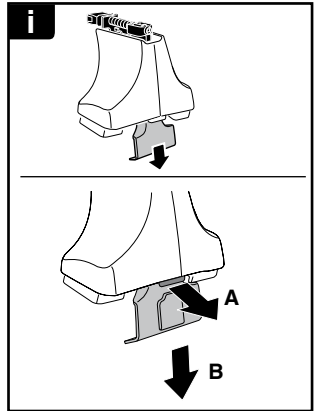
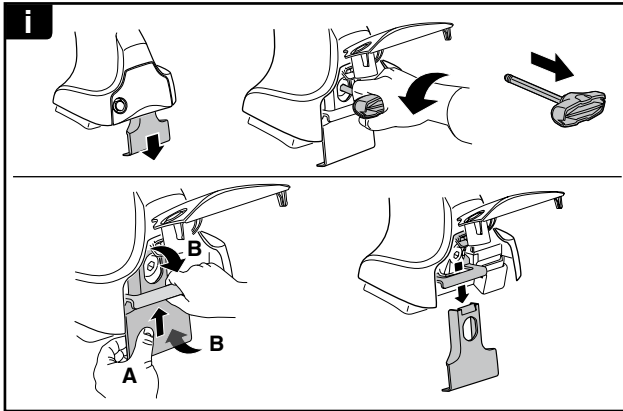
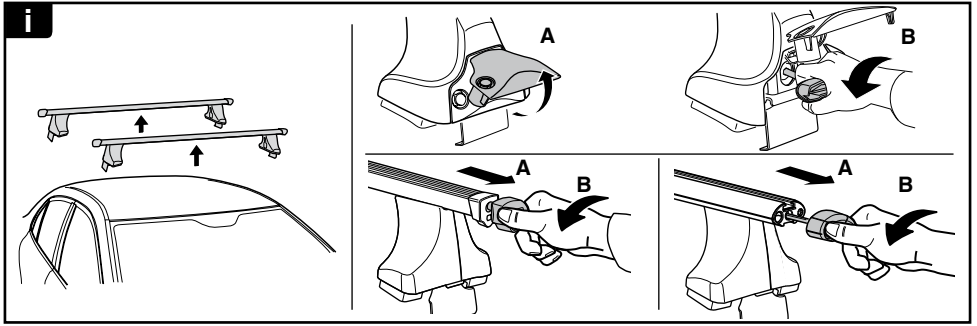
2



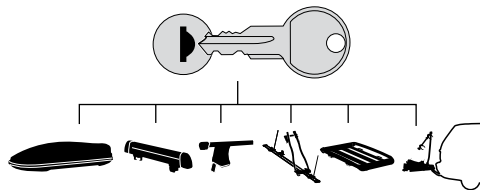
1



2



THULE
SWEDEN
**ONE
KEY
SYSTEM**



- 544 (x4)
- 596 (x6)
- 588 (x8)
- NA 510 (x10)
- EUR 452 (x12)
- ASIA

