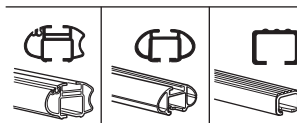
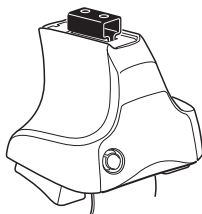


# Kit 1514

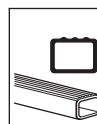
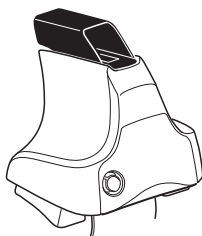
HYUNDAI i20, 3-dr Hatchback, 09–

HYUNDAI i20, 5-dr Hatchback, 09–

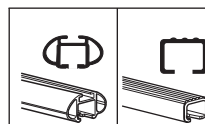
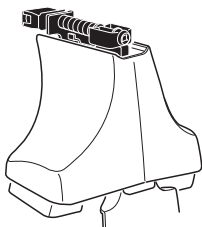
480R  
754



480



750



**THULE**<sup>®</sup>  
SWEDEN

xx kg  
 xx lbs + 7 kg / 15,4 lbs = **Max. 40 kg**  
 3 kg / 6,6 lbs = **Max. 88 lbs**

80 km/h 50 Mph 130 km/h 80 Mph  
 40 km/h 25 Mph  
**km/h Mph**

**THULE** + **Kit XXXX**

x1 x4 x4 x4

480R/754

x1 x4 x4 x4

480

x1 x4 x4

750

x2 x2 x2 x2 x2

x2 x2 x2 x2 x2

x2 x2 x2 x2 x2

x4 x4 x4 x4

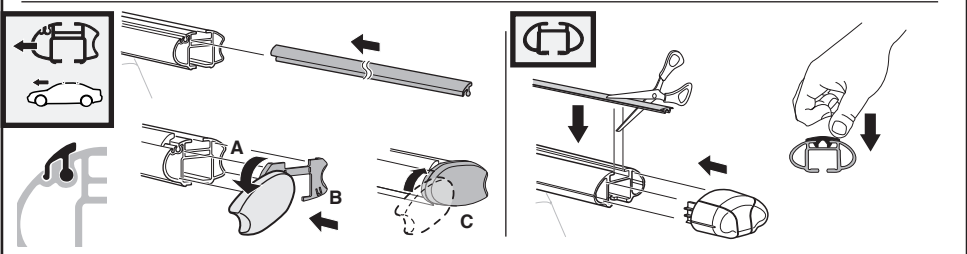
318 x2 65 x2

475 x2 120 x1

121 x1

x1

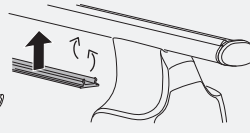
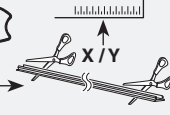
**Kit**



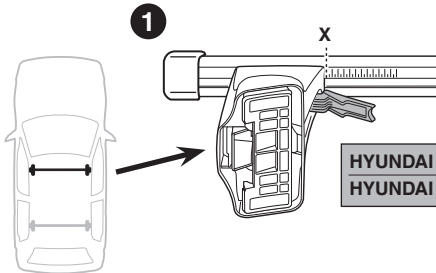
**3**



754



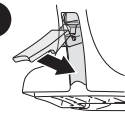
750



**1**

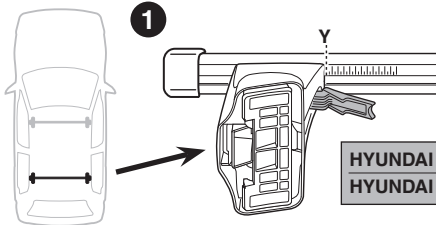
X

**2**



HYUNDAI i20, 3-dr Hatchback, 09–	33
HYUNDAI i20, 5-dr Hatchback, 09–	33

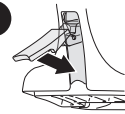
X



**1**

Y

**2**



HYUNDAI i20, 3-dr Hatchback, 09–	29
HYUNDAI i20, 5-dr Hatchback, 09–	29

Y

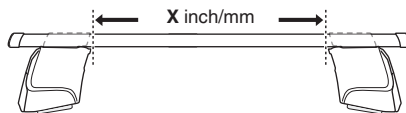


480R

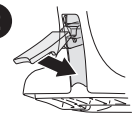


480

**1**



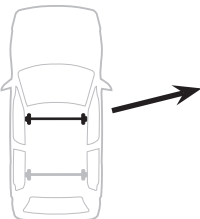
**2**



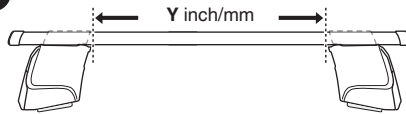
	X inch	X mm
HYUNDAI i20, 3-dr Hatchback, 09–	38 <sup>5</sup> / <sub>8</sub> "	981 mm
HYUNDAI i20, 5-dr Hatchback, 09–	38 <sup>5</sup> / <sub>8</sub> "	981 mm

X inch

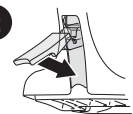
X mm



**1**



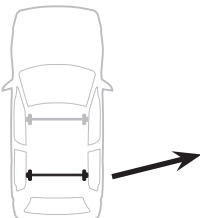
**2**

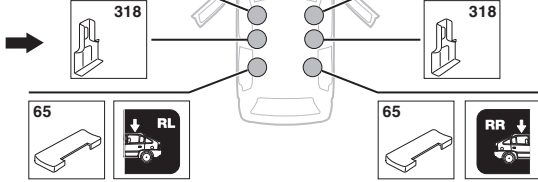
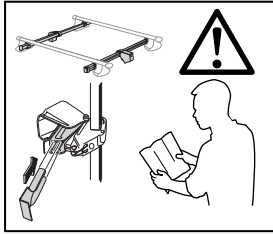
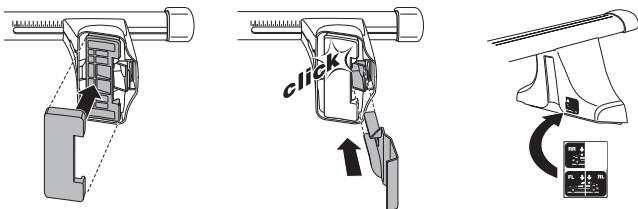
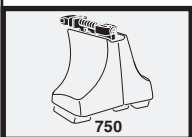
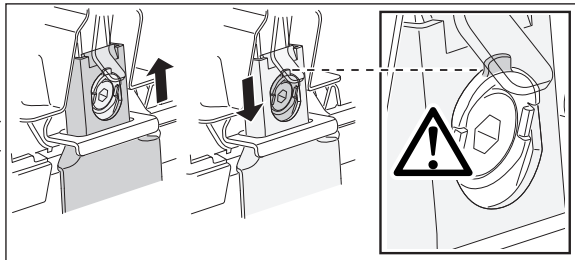
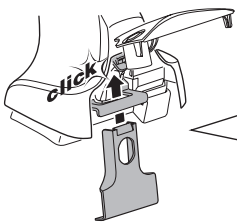
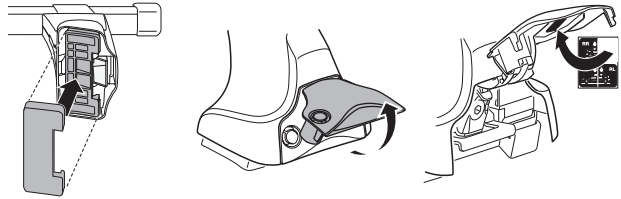
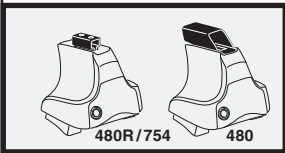
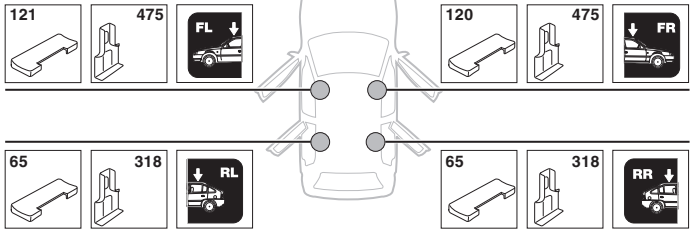


	Y inch	Y mm
HYUNDAI i20, 3-dr Hatchback, 09–	37 "	941 mm
HYUNDAI i20, 5-dr Hatchback, 09–	37 "	941 mm

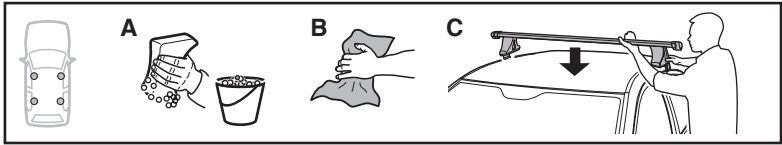
Y inch

Y mm

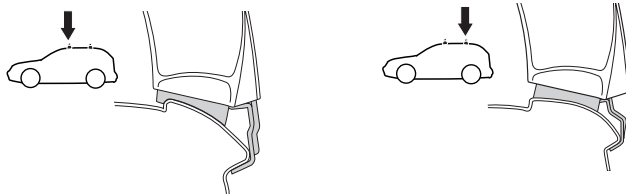
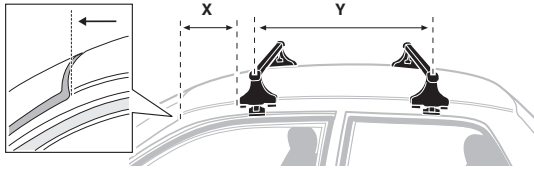


**4****HYUNDAI i20, 3-dr Hatchback, 09-****SRA****HYUNDAI i20, 5-dr Hatchback, 09-**

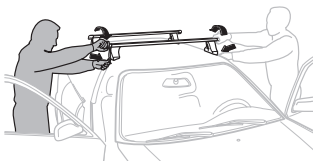
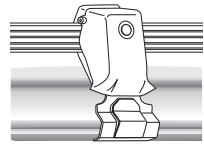
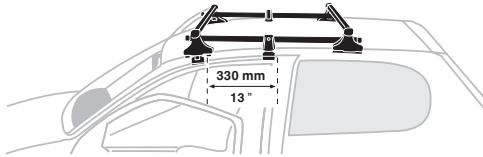
5



	X mm	Y mm	X inch	Y inch
HYUNDAI i20, 3-dr Hatchback, 09-	190 mm	670 mm	7 1/2"	26 3/8"
HYUNDAI i20, 5-dr Hatchback, 09-	190 mm	700 mm	7 1/2"	27 1/2"



HYUNDAI i20, 3-dr Hatchback, 09-



- GB/US Tighten alternately
- D Die Schrauben abwechselnd anziehen
- F Serrer alternativement chaque côté
- NL Afwisselend aan de linker- en de rechterkant aandraaien
- I Alternare il serraggio delle viti
- E Apretar alternativamente
- PT Aperte alternadamente
- S Dra åt växelvis
- FIN Kierrä vuorotellen
- EST Pinguldage vaheldumisi
- LAT Pievelciēt pamīšus
- LIT Užsukinėkite pakaitomis
- PL Śruby dokręcaj naprzemiennie
- RU Затягивайте попеременно

- CZ Pokręťta bagažníka dokręcaj dokręcaj naprzemiennie.
- SK Doťahujte striedavo
- SLO Privijajte izmenično.
- HR Naizmjenično zategnite
- HU Egymástól függetlenül szorítandó
- GR Σφιγγετε εναλλάξ
- TR Dönüşümlü sıkın
- 中文 交替拧紧
- 한국어 번갈아 가며 조이십시오.
- 日本語 交互に締め付けてください。
- ไทย ชั้ในแบบสลับ

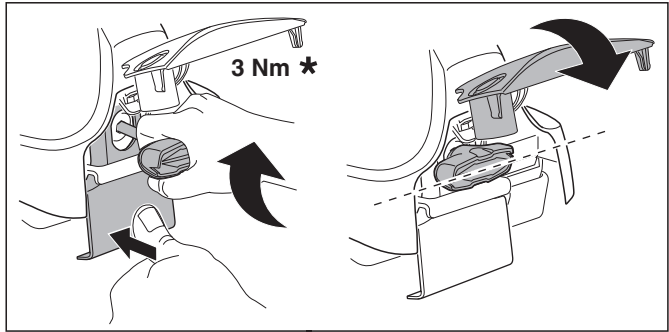
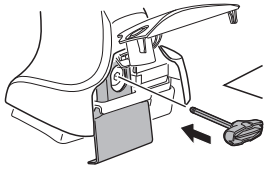
6



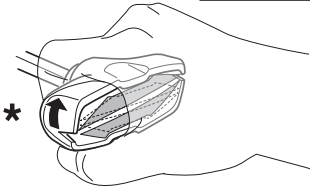
480R/754



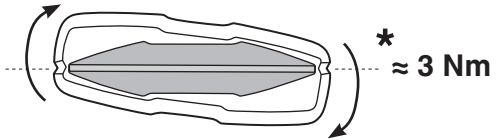
480



3 Nm \*



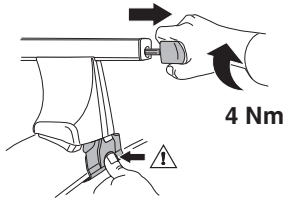
\*



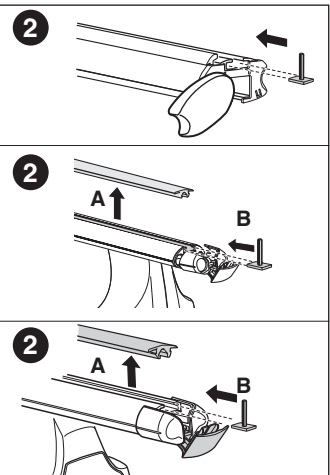
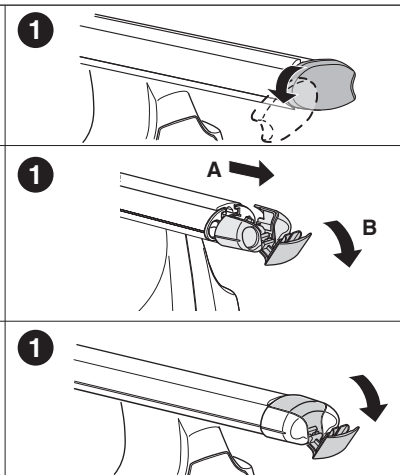
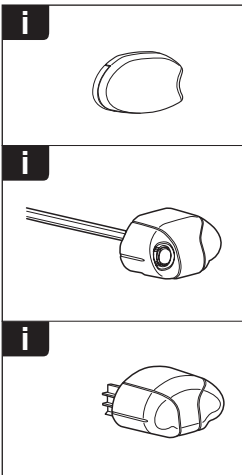
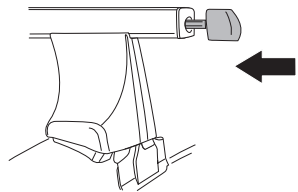
\* ≈ 3 Nm

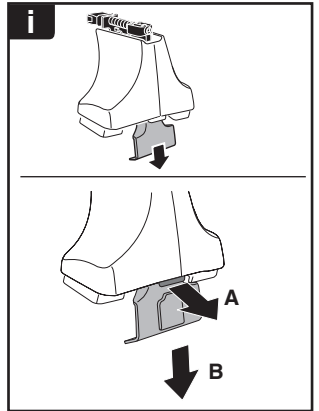


750



4 Nm





**THULE**  
SWEDEN  
**ONE  
KEY  
SYSTEM**



- 544 (x4)
- 596 (x6)
- 588 (x8)
- NA 510 (x10)
- EUR 452 (x12)
- ASIA



WW ▶ Thule Sweden AB, Box 69, 330 33 Hillerstorp, SWEDEN  
NA ▶ Thule Inc., 42 Silvermine Road, Seymour, Connecticut 06483, USA

info@thule.com  
customer.service@thule.com

www.thule.com