

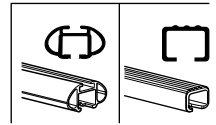
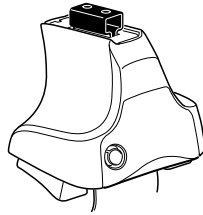
Kit 1589

VOLKSWAGEN Polo (Mk.IV), 3-dr Hatchback, 02-04, 05-09

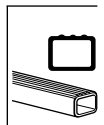
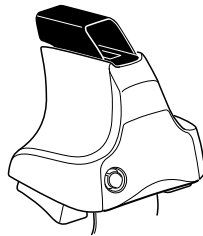
VOLKSWAGEN Polo (Mk.IV), 4-dr Sedan, 02-04, 05-09

VOLKSWAGEN Polo (Mk.IV), 5-dr Hatchback, 02-04, 05-09

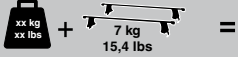
480R
754



480



VOLKSWAGEN Polo (Mk.IV), 3-dr Hatchback,
02-04, 05-09

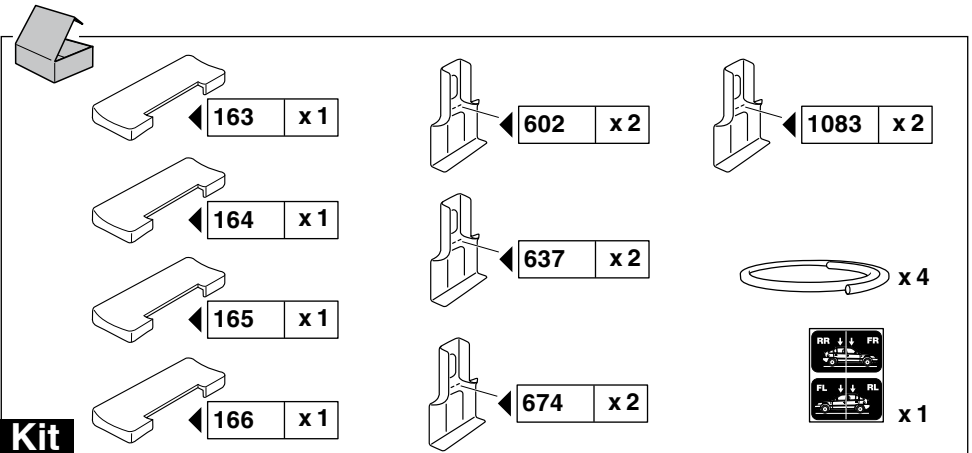
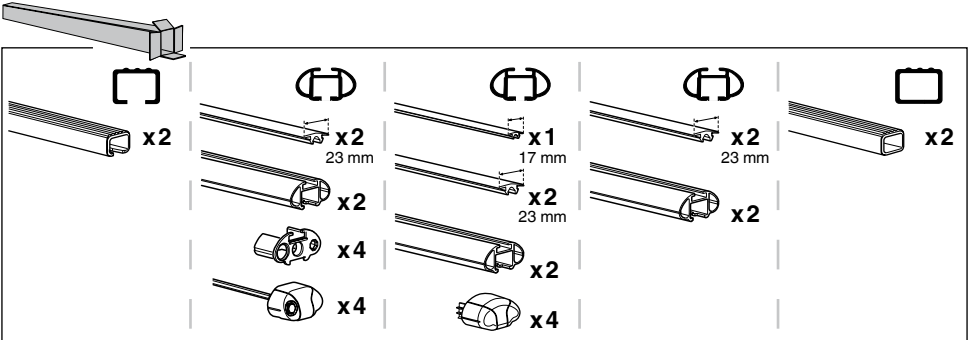
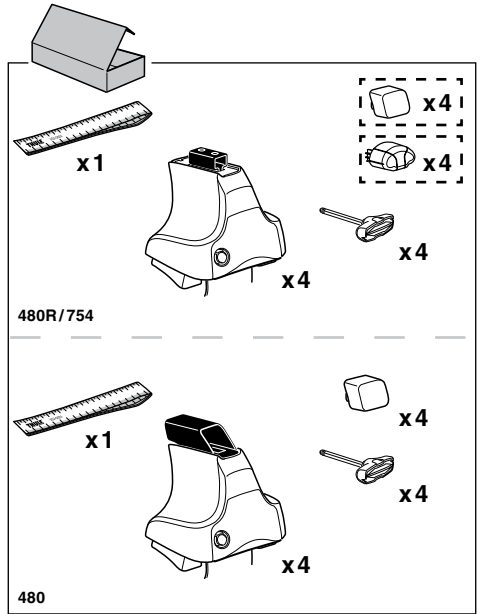
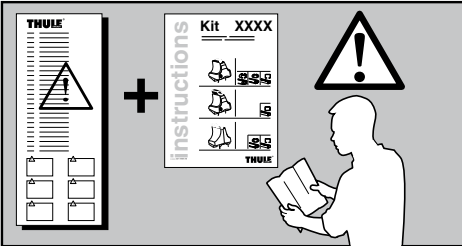
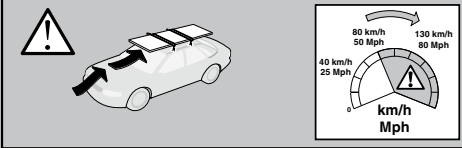


Max.
65kg/143 lbs

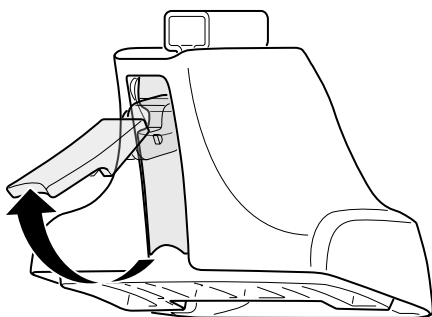
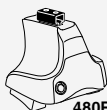
VOLKSWAGEN Polo (Mk.IV), 4-dr Sedan,
02-04, 05-09

VOLKSWAGEN Polo (Mk.IV), 5-dr Hatchback,
02-04, 05-09

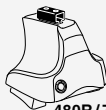
Max.
75kg/165 lbs



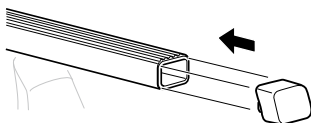
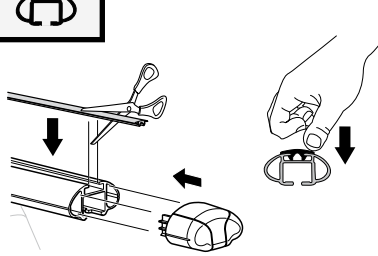
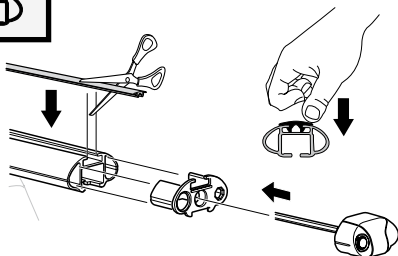
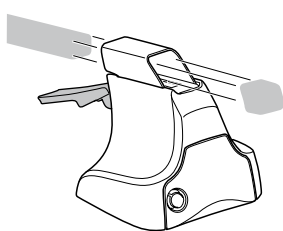
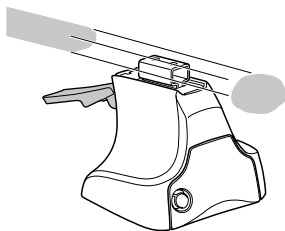
1



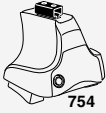
2



+

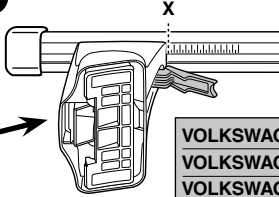
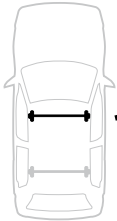


3

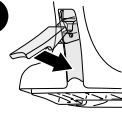


754

1

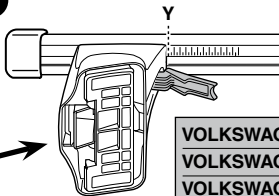
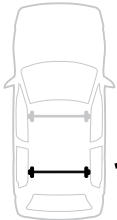


2

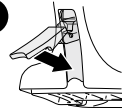


	X
VOLKSWAGEN Polo (Mk.IV), 3-dr Hatchback, 02-04, 05-09	30,5
VOLKSWAGEN Polo (Mk.IV), 4-dr Sedan, 02-04, 05-09	30
VOLKSWAGEN Polo (Mk.IV), 5-dr Hatchback, 02-04, 05-09	30,5

1



2



	Y
VOLKSWAGEN Polo (Mk.IV), 3-dr Hatchback, 02-04, 05-09	27
VOLKSWAGEN Polo (Mk.IV), 4-dr Sedan, 02-04, 05-09	28
VOLKSWAGEN Polo (Mk.IV), 5-dr Hatchback, 02-04, 05-09	27

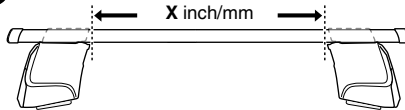


480R

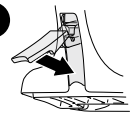


480

1

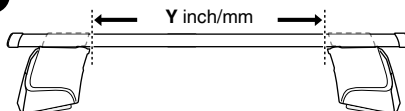


2

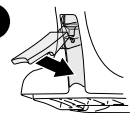


	X inch	X mm
VOLKSWAGEN Polo (Mk.IV), 3-dr Hatchback, 02-04, 05-09	37 5/8"	956 mm
VOLKSWAGEN Polo (Mk.IV), 4-dr Sedan, 02-04, 05-09	37 1/2"	951 mm
VOLKSWAGEN Polo (Mk.IV), 5-dr Hatchback, 02-04, 05-09	37 5/8"	956 mm

1

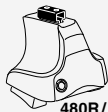


2



	Y inch	Y mm
VOLKSWAGEN Polo (Mk.IV), 3-dr Hatchback, 02-04, 05-09	36 1/4"	921 mm
VOLKSWAGEN Polo (Mk.IV), 4-dr Sedan, 02-04, 05-09	36 5/8"	931 mm
VOLKSWAGEN Polo (Mk.IV), 5-dr Hatchback, 02-04, 05-09	36 1/4"	921 mm

4



480R/754



480

VOLKSWAGEN Polo (Mk.IV), 3-dr Hatchback, 02-04, 05-09



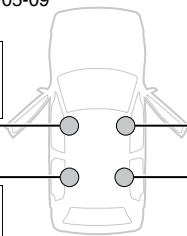
166



602



FL



165



602



FR



163



637



RL



164



637



RR

VOLKSWAGEN Polo (Mk.IV), 4-dr Sedan, 02-04, 05-09



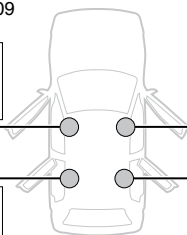
166



602



FL



165



602



FR



163



674



RL



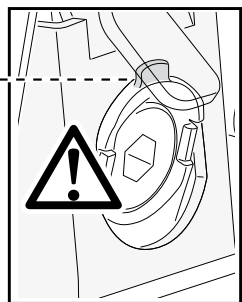
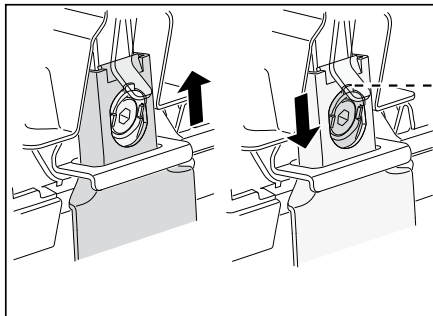
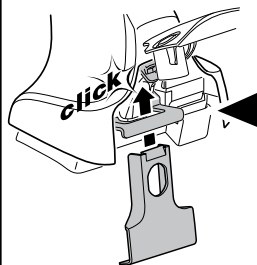
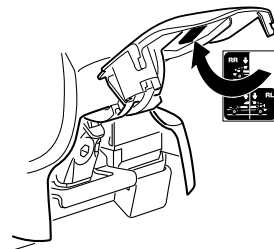
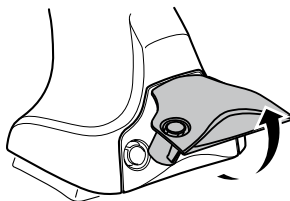
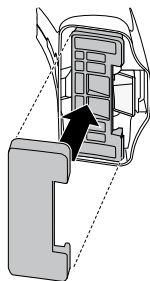
164



674



RR



4

VOLKSWAGEN Polo (Mk.IV), 5-dr Hatchback, 02-04, 05-09

166



602



FL ↓



165



602



FR ↓



163



1083



RL ↓



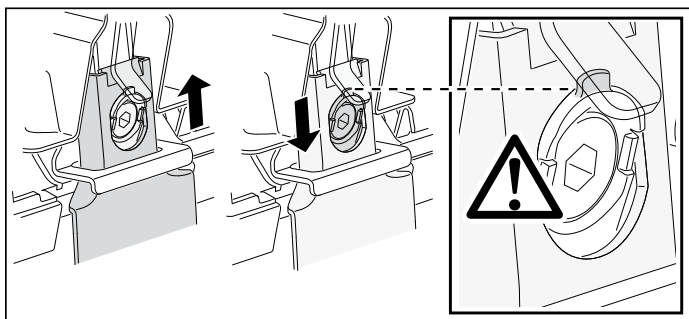
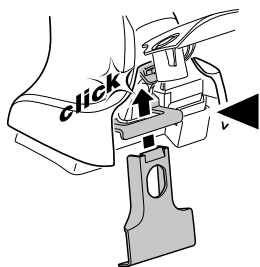
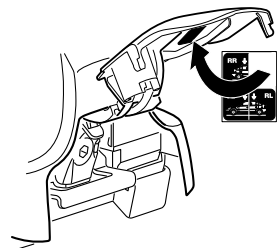
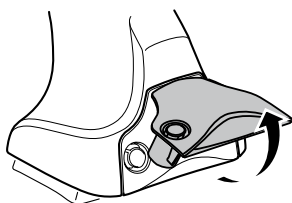
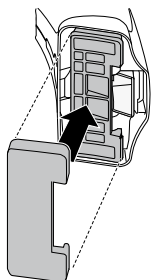
164



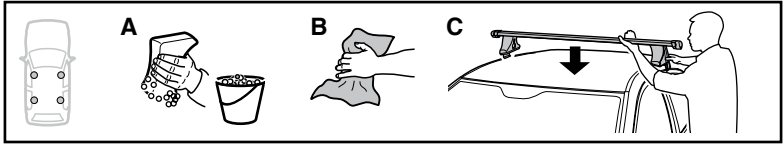
1083



RR ↓

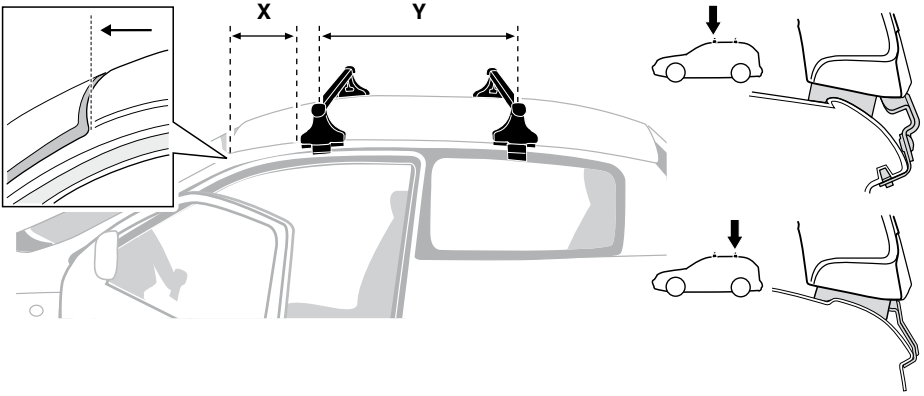
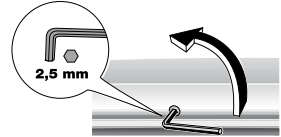


5

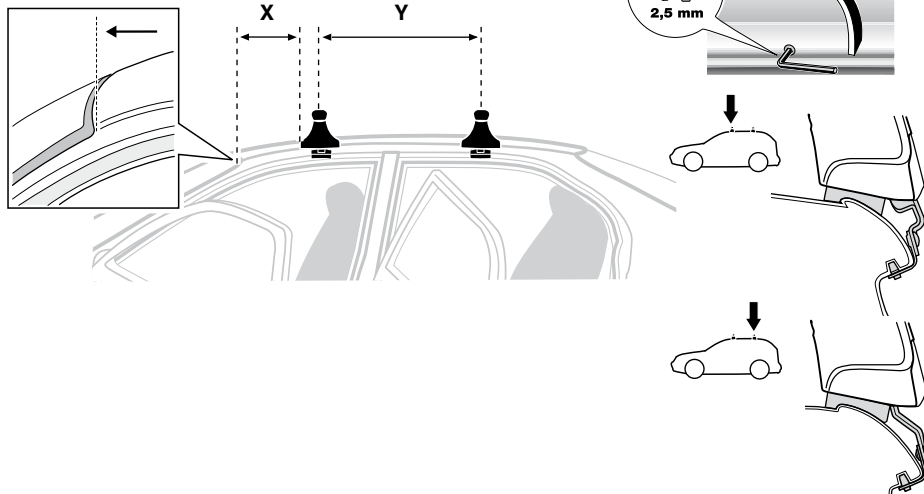
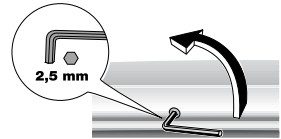


	X mm	Y mm	X inch	Y inch
VOLKSWAGEN Polo (Mk.IV), 3-dr Hatchback, 02-04, 05-09	250 mm	755 mm	9 7/8"	29 3/4"
VOLKSWAGEN Polo (Mk.IV), 4-dr Sedan, 02-04, 05-09	245 mm	790 mm	9 5/8"	31 1/8"

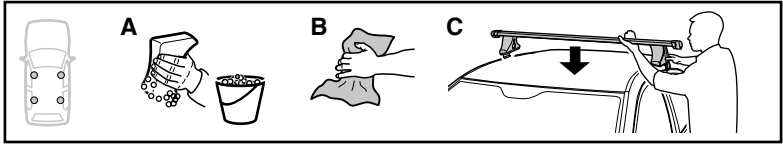
VOLKSWAGEN Polo (Mk.IV), 3-dr Hatchback, 02-04, 05-09



VOLKSWAGEN Polo (Mk.IV), 4-dr Sedan, 02-04, 05-09

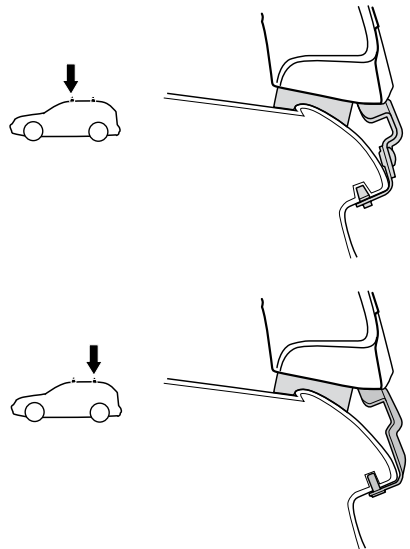
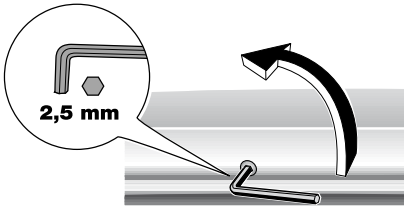
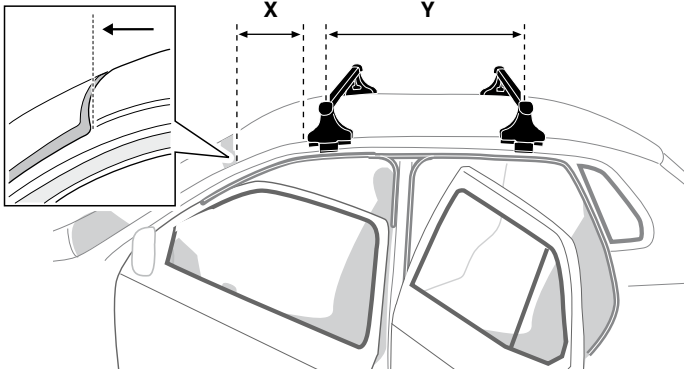


5

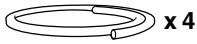


	X mm	Y mm	X inch	Y inch
VOLKSWAGEN Polo (Mk.IV), 5-dr Hatchback, 02-04, 05-09	245 mm	780 mm	9 5/8"	30 3/4"

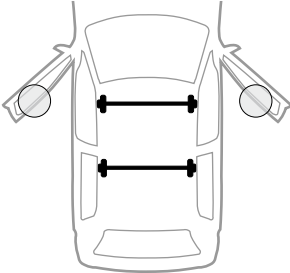
VOLKSWAGEN Polo (Mk.IV), 5-dr Hatchback, 02-04, 05-09



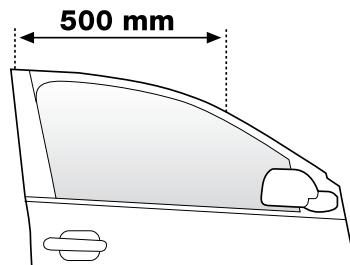
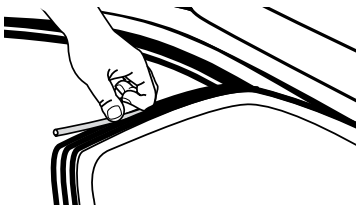
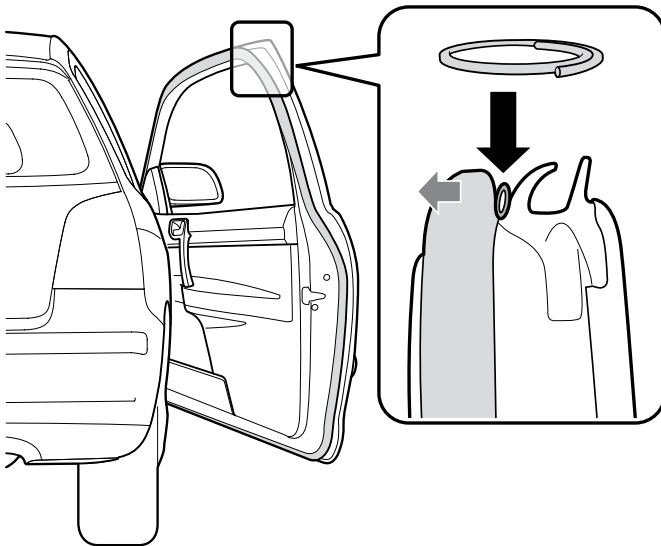
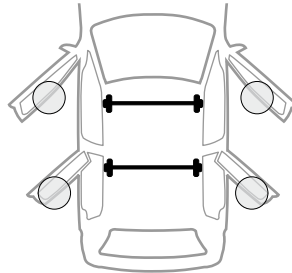
6



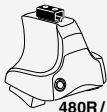
VOLKSWAGEN Polo (Mk.IV),
3-dr Hatchback, 02-04, 05-09



VOLKSWAGEN Polo (Mk.IV),
4-dr Sedan, 02-04, 05-09
VOLKSWAGEN Polo (Mk.IV),
5-dr Hatchback, 02-04, 05-09



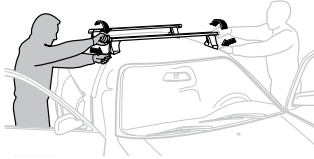
7



480R / 754



480



GB/US Tighten alternately

D Die Schrauben abwechselnd anziehen

F Serrer alternativement chaque côté

NL Afwisselend aan de linker- en de rechterkant aandraaien

I Alternare il serraggio delle viti

E Apretar alternadamente

PT Aperte alternadamente

S Dra åt växelvis

FIN Kierrä vuorotellen

EST Pinguldage vaheldumisi

LAT Pievelciēt pamišus

LIT Užsukinėkite pakaitomis

PL Śruby dokręcaj naprzemiennie

RU Затягивайте попеременно

CZ Pokręťta bagażnika dokręcaj dokręcaj naprzemiennie.

SK Dofahajte striedavo

SLO Privijajte izmenično.

HR Naizmjenično zategnite

HU Egymástól függetlenül szorítandó

GR Σφιγγετε εναλλάξ

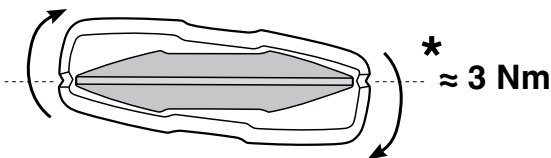
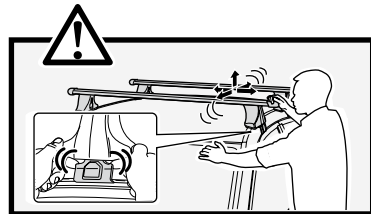
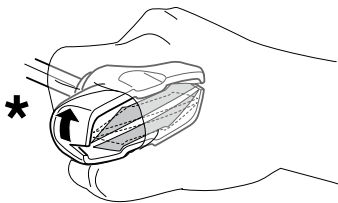
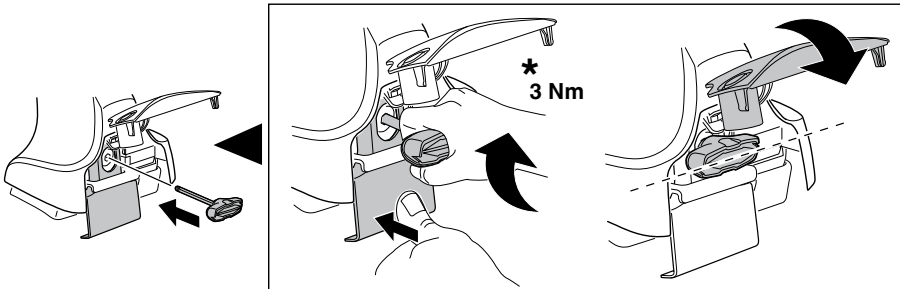
TR Dönüşümlü sıkın

中文 交替拧紧

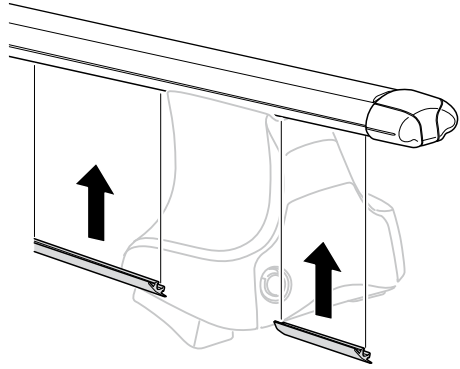
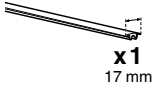
한국어 번갈아 가며 조이십시오.

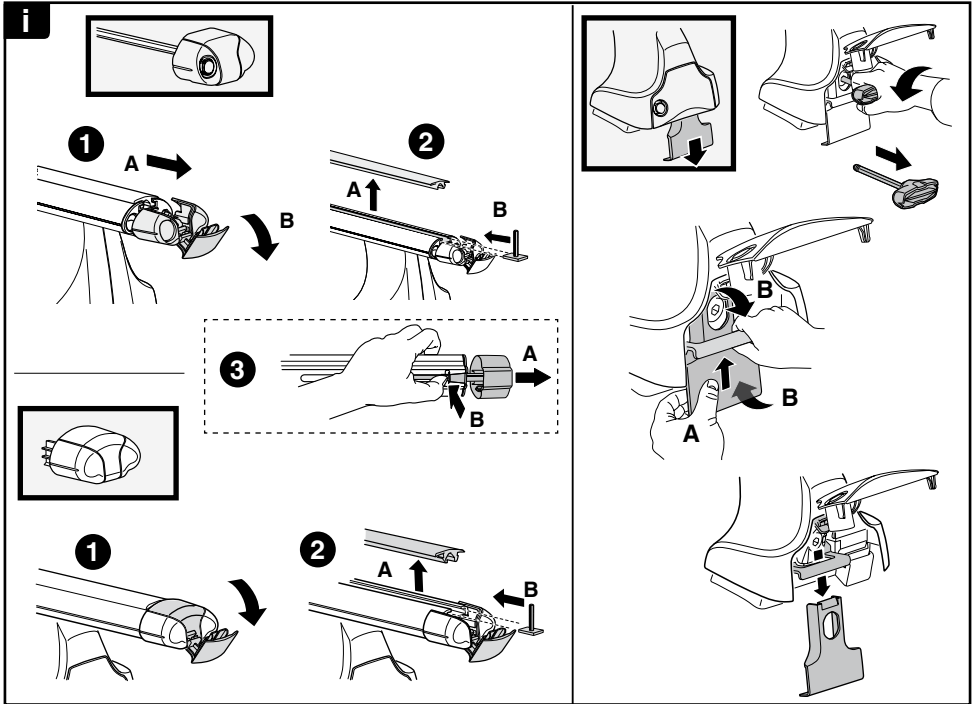
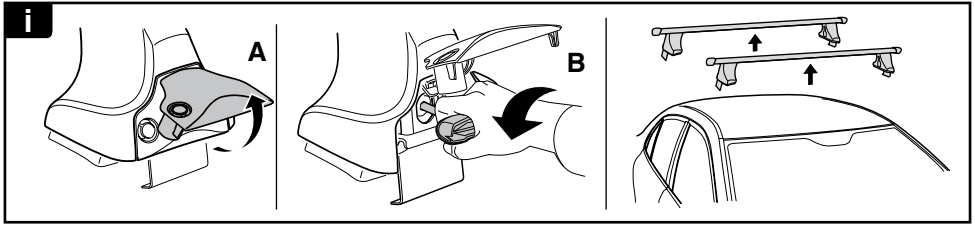
日本語 交互に締め付けてください。

ไทย ชันในแบบสลับ



8





THULE
SWEDEN

**ONE
KEY
SYSTEM**

544 (x4)

596 (x6)

588 (x8)

NA 510 (x10)

EUR 452 (x12)

ASIA