

K325 ASSEMBLY AND FITTING INSTRUCTIONS

Kit contains:

- | | |
|---------------------------|---|
| 1 x Instructions | 4 x Coach Bolts (M6 x 35mm) |
| 4 x Metal Loadplates | 8 x Capscrews M6 (4 x 25mm, 4 x 12mm) |
| 4 x Rubber Pads | 8 x Washers M6 |
| 4 x Metal Clamps | 1 x Large Allen Key |
| 4 x Plastic Packer Blocks | |
| 4 x Plastic Location Pegs | Remove parts from box & check |
| 4 x Red Plastic Knobs | Contact your Prorack dealer if any parts are missing or damaged |

Items you may require that are not included:

- Tape measure
- Masking tape or similar

Maximum
Whispbar
Load
Rating

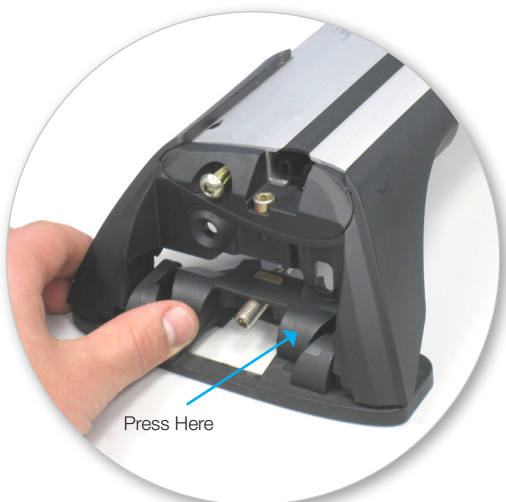
60
kg

When fitted and loaded correctly

Important Note:

Whispbar Flush Bar pictured in these instructions, also applicable for Whispbar Through Bar

1. Fitting Loadplates to Legs



1.1

- Remove crossbar and this kit from the packaging
- Follow step 1-3 of crossbar assembly instructions
- Remove clamp block by pressing backwards



1.2

- Remove both pins from each leg (use spanner/screwdriver located inside one of the left hand covers to assist)



1.3

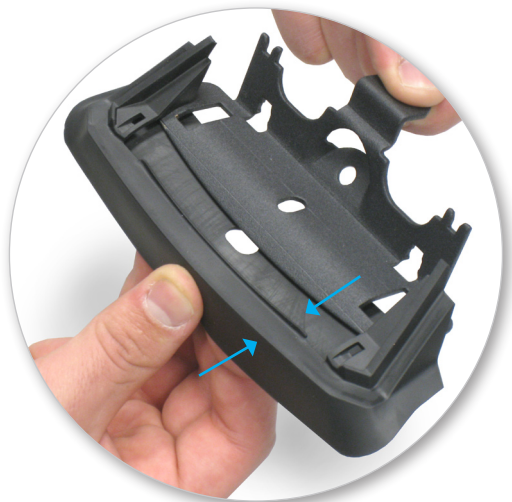
- While holding crossbar, detach foot from leg



Parts removed from each leg

1.4

- Repeat steps 1.1-1.3 for all legs
- Store these parts in a safe place as they are not required for this fitting kit



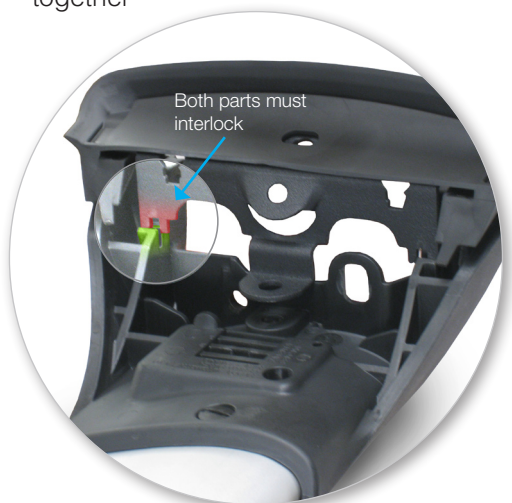
1.5

- Select a metal loadplate and rubber pad from the fitting kit and assemble together



1.6

- Assemble all four metal loadplates and rubber pads



1.7

- Assemble metal loadplate into leg (*ensure loadplate interlocks with the leg*)



1.8

- Using M6 x 12mm capscrews and washers, secure metal loadplate onto leg using Hex Screwdriver supplied with crossbar
- Repeat steps 1.7-1.8 for all legs



1.9

- Select four plastic location pegs
- Pull rubber pad back slightly and insert one location peg into the rear position on the metal loadplate which is the narrow edge of crossbar (*plastic location peg will 'click' into place*)

Important Note:

If you have a Subaru Legacy or Liberty Wagon (Sep 03+) go to Step 5

2. Positioning Crossbar on Vehicle



2.1

- Crossbar position is adjustable along the length of the flush rail. We recommend a minimum of 60cm apart
- It's important at this stage to consider the type of load you intend to carry as the load may interfere with items such as rear tailgate, etc
- Make sure there is no interference between the load & aerials, sunroof or tailgates



2.2

- Place crossbars onto flush rails and adjust so the plastic location peg engages the inner side of the rails
- It's important the crossbar is placed the correct way with narrow edge of the crossbar to the back of the vehicle



2.3

- Once you are happy with the position of the racks, tighten top adjusting screw to lock leg onto crossbar



2.4

- Temporarily mark with masking tape or pencil the position of crossbars on flush rail

3. Fitting Clamps and Coachbolts



3.1

- Remove crossbars off vehicle and turn upside down
- Select metal clamp and fit small tongue into position two on the leg (*position two is marked on the leg*)



3.2

- Swing clamp towards metal loadplate and check clamp tongue is engaged into position



3.3

- Select coachbolt and insert through metal clamp slot



3.4

- While holding clamp and coachbolt, turn crossbar over to upright position and loosely assemble red plastic knob to the end of coachbolt, do not tighten
- Repeat steps 3.1 to 3.4 on all legs

4. Final Fitment to Vehicle



4.1

- Place crossbars back onto vehicle roof by placing one end of the crossbar on the rail and swing the other into marked position



4.2

- Ensure clamp engages correctly inside of flush rail



4.3

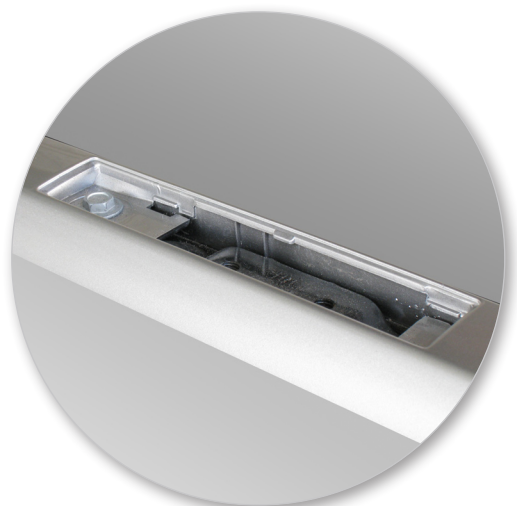
- Begin tightening plastic red knob evenly on each leg on both crossbars (*large Allen key can be used here to assist tightening knob but do not overtighten*)
- Ensure plastic red knob is vertical when fully tightened



4.4

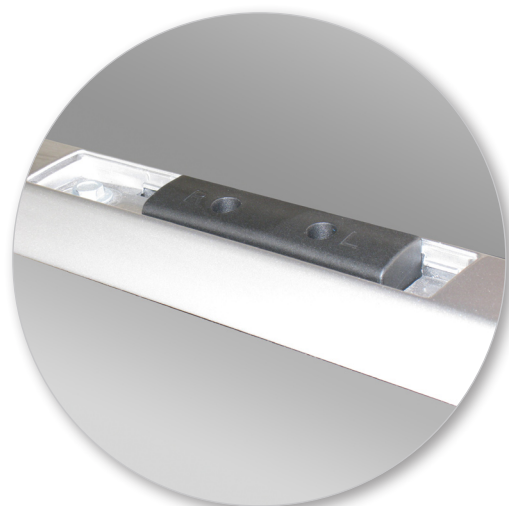
- Check crossbars feel tight
- Refit covers to legs

5. Subaru Legacy or Liberty Wagon Sep 03+ ONLY



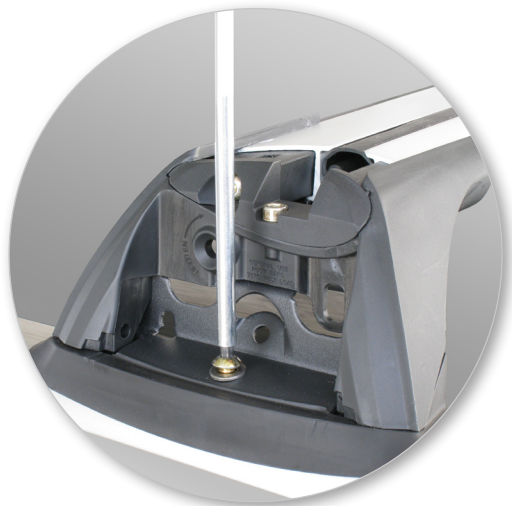
5.1

- Locate and remove four fixpoint covers from vehicle using small screwdriver or pocket knife



5.2

- Select plastic packer blocks from fitting kit and insert into fixpoints *Note: blocks have R & L which should be read from beside the vehicle*



5.3

- Position crossbar on roof of vehicle so hole in centre of metal loadplate lines up through packer block with threaded insert in fixpoint *Note: on the right hand side of the vehicle the packer block is to use the whole marked 'R' and the left hand side the hole marked 'L'*
- Select four M6 x 25mm capscrews and four M6 washers and tighten
- Tighten adjusting screws
- When fitting through bars, tighten using Allen Key located inside one of the right hand covers to assist



5.4

- Check crossbars feel tight
- Refit covers to legs

Warning Notes

- Use these instruction in conjunction with crossbar instructions

WARNING: Check the Tightness of Screws Regularly