

K340 ASSEMBLY AND FITTING INSTRUCTIONS

Kit contains:

- 1 x Instructions
- 4 x Stepped Rubber Pads
- 4 x Red Plastic Knobs
- 4 x Plastic Internal Blocks
- 4 x Grubscrews, M6 x 60mm
- 1 x Allen Key, 3mm

Remove parts from box & check
Contact your Prorack dealer if any parts are
missing or damaged

Items you will require that are not included:
Tape measure

Maximum
Whispbar
Load
Rating

75
kg

When fitted and loaded
correctly

Important Note:

Whispbar Flush Bar pictured in these instructions, also applicable for Whispbar Through Bar

1. Crossbar Preparation



1.1

- Remove crossbar and this kit from the packaging
- Follow step 1-3 of crossbar assembly instructions
- Remove clamp block by pressing backwards



1.2

- Fit stepped rubber pad (from fitting kit) to foot
- Press pad firmly onto foot by putting thumb pressure on area where pad spigots engage



1.3

- Select plastic internal block and insert into foot



1.4

- Repeat on all four legs

2. Positioning Crossbar on Vehicle



2.1

- Remove fixpoint covers



2.2

- Select four M6 x 60mm grub screws and screw them into the centre hole, do not over tighten
- Repeat steps 2.1 - 2.2 for all four positions



2.3

- Adjust crossbar length by clicking legs in or out and using the hex screwdriver provided lock top adjusting screw
- Place crossbar foot over grub screws



2.4

- Select red plastic knob and tighten crossbar to grub screws



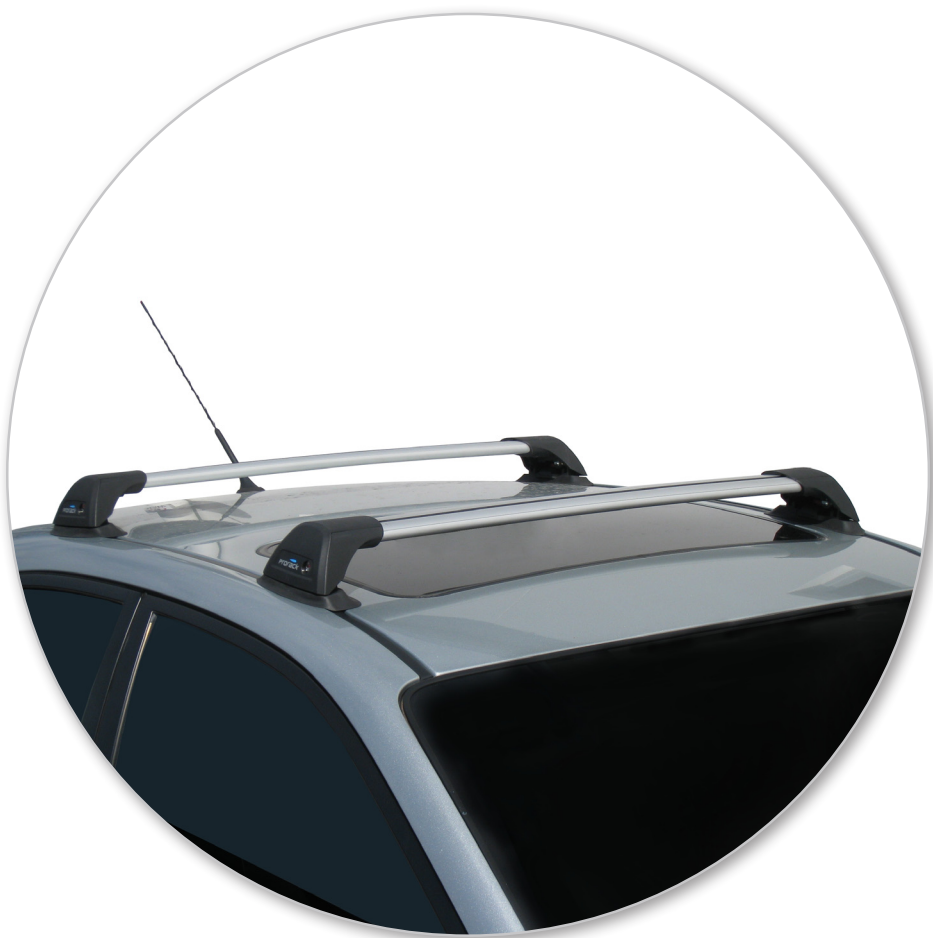
2.5

- Ensure red plastic knob is in the same position as pictured above
- Repeat for all four positions



2.6

- Check crossbar feels tight
- Refit covers to leg



Warning Notes

- Use these instruction in conjunction with crossbar instructions

WARNING: Check the Tightness of Screws Regularly