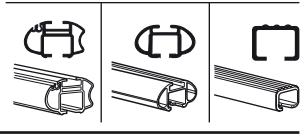


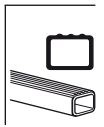
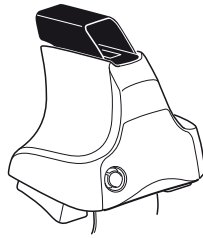
# Kit 1257

SKODA Superb, 4-dr Sedan, 02-04, 05-07

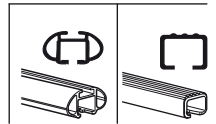
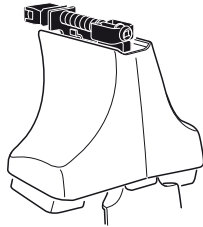
480R  
754



480

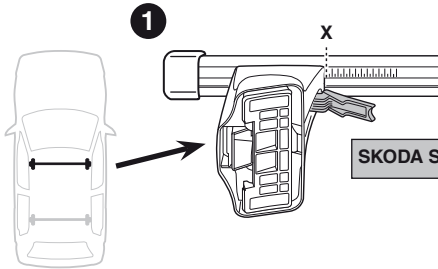


750

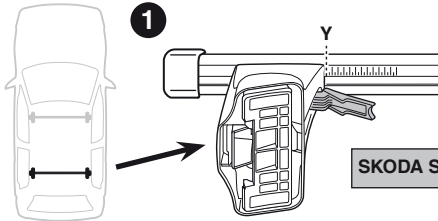


**Kit**

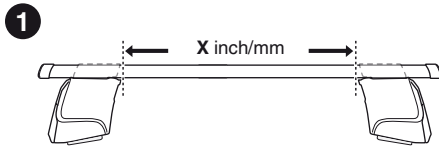
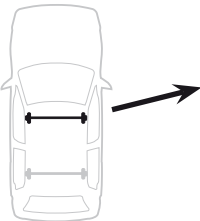




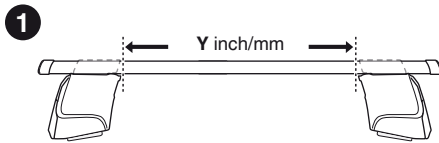
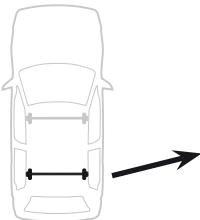
<b>SKODA Superb, 4-dr Sedan, 02-04, 05-07</b>	<b>X</b>
	<b>33</b>



<b>SKODA Superb, 4-dr Sedan, 02-04, 05-07</b>	<b>Y</b>
	<b>32,5</b>



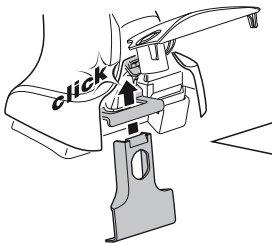
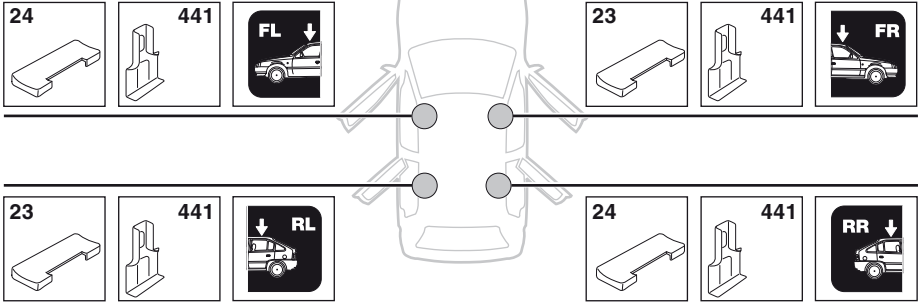
<b>SKODA Superb, 4-dr Sedan, 02-04, 05-07</b>	<b>X inch</b>	<b>X mm</b>
	<b>38 5/8"</b>	<b>981 mm</b>



<b>SKODA Superb, 4-dr Sedan, 02-04, 05-07</b>	<b>Y inch</b>	<b>Y mm</b>
	<b>38 3/8"</b>	<b>976 mm</b>

# 4

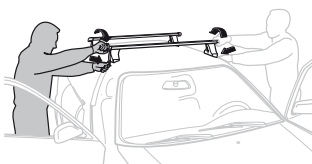
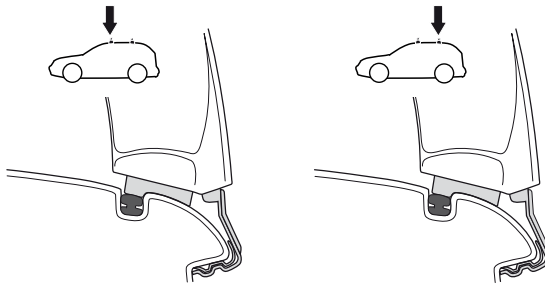
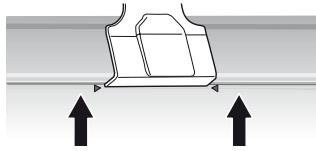
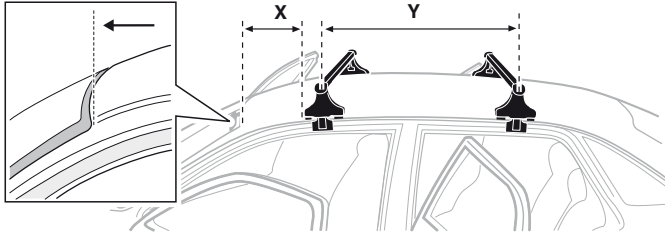
SKODA Superb, 4-dr Sedan, 02-04, 05-07



5

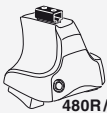


	X mm	Y mm	X inch	Y inch
<b>SKODA Superb, 4-dr Sedan, 02-04, 05-07</b>	<b>290 mm</b>	<b>780 mm</b>	<b>11 3/8"</b>	<b>30 3/4"</b>



- |              |   |            |   |
|--------------|---|------------|---|
| <b>GB/US</b> | Tighten alternately                                     | <b>CZ</b>  | Pokřetla bagazníka dokřećaj dokřećaj napřezemennie. |
| <b>D</b>     | Die Schrauben abwechselnd anziehen                      | <b>SK</b>  | Dofahujte striedavo                                 |
| <b>F</b>     | Serrer alternativement chaque côté                      | <b>SLO</b> | Privijajte izmenično.                               |
| <b>NL</b>    | Afwisselend aan de linker- en de rechterkant aandraaien | <b>HR</b>  | Naizmjenično zategnite                              |
| <b>I</b>     | Alternare il serraggio delle viti                       | <b>HU</b>  | Egymástól függgetlenül szorítandó                   |
| <b>E</b>     | Apretar alternativamente                                | <b>GR</b>  | Σφιγγετε εναλλάξ                                    |
| <b>PT</b>    | Aperte alternadamente                                   | <b>TR</b>  | Dönüşümlü sıkın                                     |
| <b>S</b>     | Dra åt växelvis   | <b>中文</b>  | 交替拧紧  |
| <b>FIN</b>   | Kierrä vuorotellen                                      | <b>한국어</b> | 번갈아 가며 조이십시오.                                       |
| <b>EST</b>   | Pinguldage vaheldumisi                                  | <b>日本語</b> | 交互に締め付けてください。                                       |
| <b>LAT</b>   | Pielvelciet pamišus                                     | <b>ไทย</b> | ขันในแบบสลับ  |
| <b>LIT</b>   | Užaukinėkite pakaitomis                                 |            |   |
| <b>PL</b>    | Śruby dokřećaj napřezemennie                            |            |   |
| <b>RU</b>    | Затягивайте попеременно                                 |            |   |

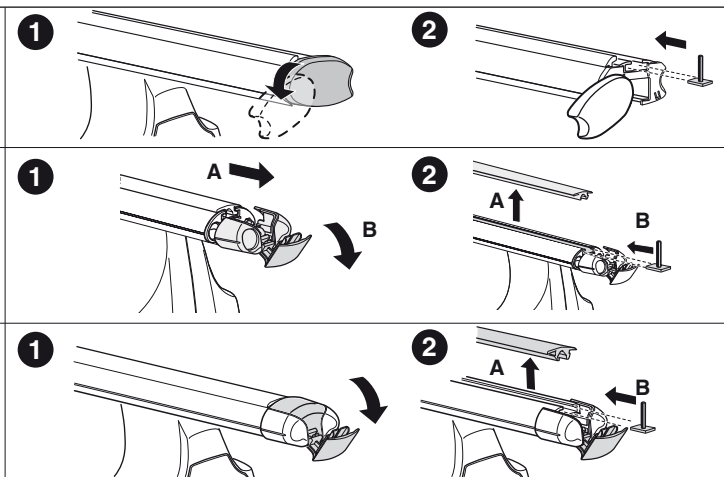
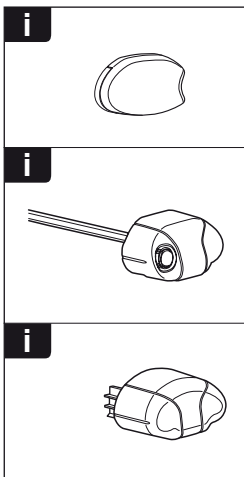
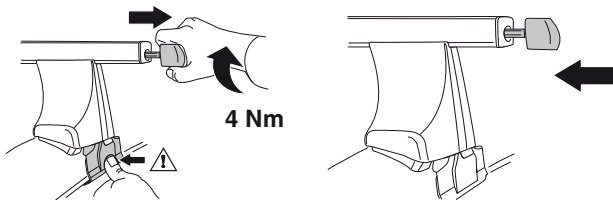
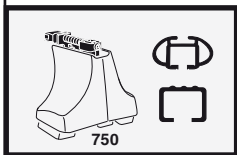
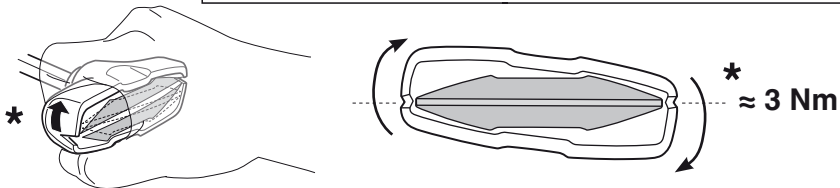
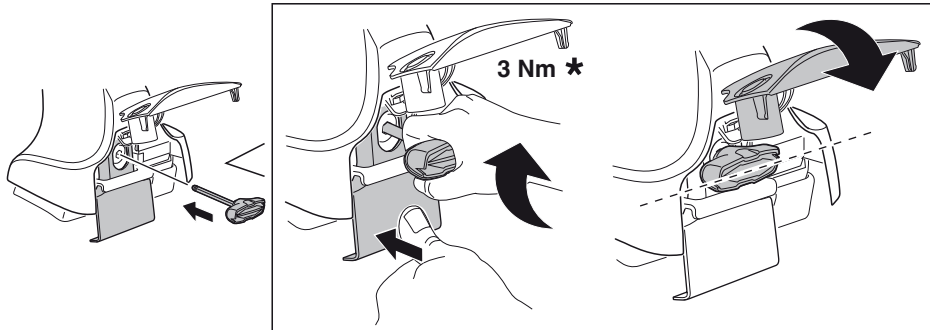
6

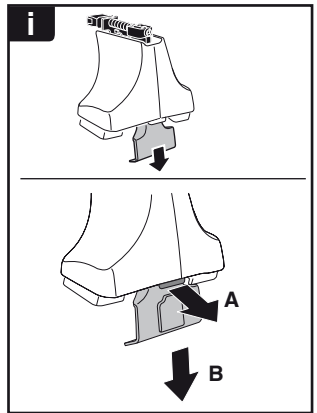
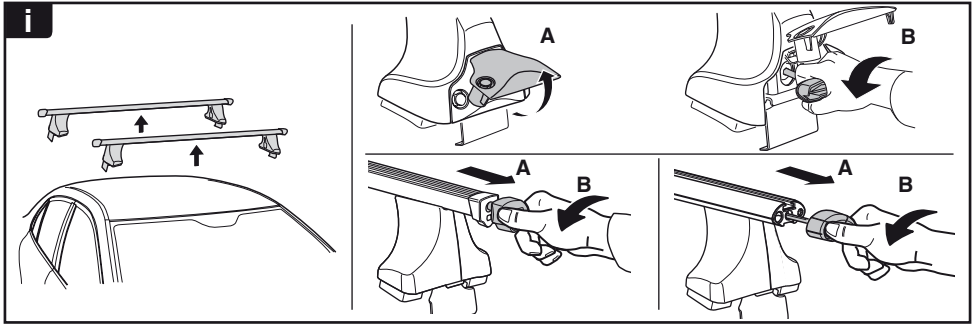


480R/754



480





**THULE**  
SWEDEN  
**ONE  
KEY  
SYSTEM**



		(x4)
		(x6)
		(x8)
NA		(x10)
EUR		(x12)
ASIA		(x12)



WW ▶ Thule Sweden AB, Box 69, 330 33 Hillerstorp, SWEDEN  
NA ▶ Thule Inc., 42 Silvermine Road, Seymour, Connecticut 06483, USA

info@thule.com  
customer.service@thule.com

www.thule.com